

# ASIAN ART

Wednesday 22 March 2017

Edinburgh



# Bonhams



王龍  
印

# ASIAN ART

Wednesday 22 March 2017 at 11am  
22 Queen Street, Edinburgh

## BONHAMS

22 Queen Street  
Edinburgh EH2 1JX  
+44 (0) 131 225 2266  
+44 (0) 131 220 2547 fax  
[www.bonhams.com/edinburgh](http://www.bonhams.com/edinburgh)

## VIEWING

Sunday 19 March  
1pm to 4pm  
Monday 20 March  
10am to 4pm  
Tuesday 21 March  
10am to 4pm  
Wednesday 22 March  
9am to 11am

## BIDS

+44 (0) 20 7447 7447  
+44 (0) 20 7447 7401 fax  
To bid via the internet please  
visit [bonhams.com](http://bonhams.com)

Please provide details of the lots  
on which you wish to place bids  
at least 24 hours prior to the  
sale.

New bidders must also provide  
proof of identity when submitting  
bids. Failure to do this may  
result in your bids not being  
processed.

**Please note telephone bids  
can only be accepted on lots  
with a lower estimate in  
excess of £500.**

## Bonhams 1793 Limited

Registered No. 4326560  
Registered Office: Montpelier Galleries  
Montpelier Street, London SW7 1HH

+44 (0) 20 7393 3900  
+44 (0) 20 7393 3905 fax

## ENQUIRIES

Ian Glennie  
+44 (0) 131 240 2299  
[ian.glennie@bonhams.com](mailto:ian.glennie@bonhams.com)

Rebecca Bohle  
+44 (0) 131 240 2630  
[rebecca.bohle@bonhams.com](mailto:rebecca.bohle@bonhams.com)

## CUSTOMER SERVICES

Monday to Friday 8.30 to 18.00  
+44 (0) 20 7447 7447

## SALE NUMBER

24081

## CATALOGUE

£10

**We would like to thank Ayako  
Kobayashi for her contribution  
in cataloguing Japanese lots  
for this sale.**

## Bonhams International Board

Robert Brooks Co-Chairman,  
Malcolm Barber Co-Chairman,  
Colin Sheaf Deputy Chairman,  
Matthew Girling CEO,  
Patrick Meade Group Vice Chairman,  
Jon Baddeley, Rupert Banner, Geoffrey Davies,  
Jonathan Fairhurst, Asaph Hyman, James Knight,  
Caroline Oliphant, Shahin Virani,  
Edward Wilkinson, Leslie Wright.

## Live online bidding is available for this sale

Please email [bids@bonhams.com](mailto:bids@bonhams.com)  
with 'live bidding' in the  
subject line 48 hours before the  
auction to register for this  
service. Please see page 2 for  
bidder information including  
after-sale collection and  
shipment

**Please see back of catalogue  
for important notice to  
bidders**

## ILLUSTRATIONS

Front cover: Lot 163  
Inside front cover: Lot 59  
Inside back cover: Lot 145  
Back cover: Lot 203

## IMPORTANT INFORMATION The United States

**Government has banned the  
import of ivory into the USA.  
Lots containing ivory are  
indicated by the symbol  $\Phi$   
printed beside the lot number  
in this catalogue.**



## Bonhams UK Ltd Directors

Colin Sheaf Chairman,  
Harvey Cammell Deputy Chairman,  
Antony Bennett, Matthew Bradbury,  
Lucinda Bredin, Simon Cottle, Andrew Currie,  
Paul Davidson, Jean Ghika,  
Charles Graham-Campbell, Matthew Haley,  
Richard Harvey, Robin Hereford, David Johnson,  
Charles Lanning, Miranda Leslie,

Gordon McFarlan, Andrew McKenzie,  
Simon Mitchell, Jeff Muse, Mike Neill,  
Charlie O'Brien, Giles Peppiatt, India Phillips,  
Peter Rees, John Sandon, Tim Schofield,  
Veronique Scorer, James Stratton, Ralph Taylor,  
Charlie Thomas, David Williams,  
Michael Wynnell-Mayow, Suzannah Yip.

# SALE INFORMATION

**Edinburgh Salerooms**  
22 Queen Street, EH2 1JX  
+44 (0) 131 225 2266  
+44 (0) 131 220 2547 fax

**Bonhams West of Scotland**  
Kirkhill House  
Broom Road East  
Newton Mearns  
Glasgow G77 5LL  
+44 (0) 141 223 8866  
+44 (0) 141 223 8868 fax

**London**  
101 New Bond Street, W1S 1SR  
+44 (0) 20 7447 7447  
+44 (0) 20 7447 7400 fax

**Managing Director**  
Miranda Leslie

**Chairman Scotland**  
Ray Entwistle

**Valuations, Trusts & Estates**  
Charles Graham-Campbell  
Grant MacDougall  
Gordon McFarlan  
Belinda Treble

**The Scottish Sale**  
Miranda Leslie

**Pictures**  
Chris Brickley  
Colleen Bowen  
Iain Byatt-Smith  
Saskia Robertson

**Jewellery & Silver**  
Gordon McFarlan  
Fiona Hamilton  
Alexis Tortolano

**Asian Art**  
Ian Glennie  
Asha Edwards  
Rebecca Bohle

**European Ceramics & Glass**  
Katherine Wright

**Wine**  
Thomas Gilbey

**Books, Manuscripts & Maps**  
Henry Baggott  
Georgia Williams

**Arms & Armour**  
Kenneth Naples

**Furniture, Clocks, Oriental  
Carpets, Works of Art &  
Scientific Instruments**  
Kenneth Naples  
Georgia Williams

**Whisky**  
Martin Green  
Charles MacLean (consultant)

**The Sporting Sale**  
Henry Baggott  
Georgia Williams

**Fine Furniture**  
Bruce Addison

---

## IMPORTANT NOTICE TO BUYERS

At our absolute discretion we may require a Bank reference and/or a Deposit from bidders, as a condition of allowing you to register to bid.

Please note that all furniture and large works of arts not collected from the saleroom by Friday 31 March 2017 will be transferred to our external storage. Transfer and storage charges will apply from that date. Prior to collection of furniture and larger works of art please contact Ian Glennie in the Edinburgh office tel. 0131 240 2299 or by email. [ian.glennie@bonhams.com](mailto:ian.glennie@bonhams.com).

Transfer £15 per item plus VAT  
Storage £15 per item per week plus VAT

Items will be stored at John Pye Auctions  
Address:  
John Pye Auctions  
Carriden  
Bo'ness  
West Lothian  
EH51 9SF

# JAPANESE ART

Lots 1 - 63





4

## IVORY, NETSUKE AND INRO

1 Y Φ

### THREE IVORY OKIMONO

Meiji

One carved as a male figure holding up a wooden pail, with face mask around his neck and his foot balancing on a small log, *19cm high*, a figure of a netsman carrying a coiled up net and a basket, *17.3cm high*, and a sectional figure of an old man showing a young boy a tortoise in his hand, *16cm high and signed*

£800 - 1,200

2 Y Φ

### FOUR IVORY OKIMONO

Meiji

One sectional of a lady dressed in a kimono, *25.3cm high*, a sectional man with a child on his back, *20.2cm high*, another carved in the whole, modelled as a performer holding a toy figure on stand, with drum and stick at his feet, *21.7cm high* and a sectional man with a monkey, *23cm high*, signed on a red lacquer plaque (some losses),

£400 - 600

3 Y Φ

### TWO IVORY OKIMONO

One by Shizuyuki, Meiji

One figural group depicting two men with fans, the standing figure holding a wooden pail beside a crouched man holding a tea bowl up, a box of produce next to them both, *14cm high*, signed, the other with an old man crouched over a basket with grapes, a young boy perched on his back holding a bunch of grapes, *10.5cm*

£400 - 600



5

4 Y Φ

### AN IVORY FIGURE GROUP OF A MONKEY TRAINER

By Gyokuyuki, Meiji

The crouching male figure with one performing monkey on a leash, another upon a tamborine at his feet, stood before a carved screen depicting two further monkeys in human clothing, signed twice, *10cm high*

£500 - 600

5 Y Φ

### A CARVED IVORY FIGURE GROUP

Meiji

Depicting a young lady in traditional robes resting upon a basket, holding fruits aloft as a young boy crawls at her feet, on an intrinsic base section, unsigned, *14.5cm across and 4.5cm high*

£300 - 500

6 Y Φ

### A CARVED IVORY GROUP OF THREE FEMALE MUSICIANS

By Ichiryusai Chomin, Meiji

The three standing figures in patterned traditional robes, each with a stringed instrument, raised upon an intrinsic naturalistically rocky base, signed, *15.5cm high*

£800 - 1,200

7 Y Φ

### AN IVORY AND BONE IMMORTALS AND TAKARABUNE GROUP

Meiji

Featuring the seven lucky gods on their 'treasure ship', *31cm long, 27cm high and displayed upon a wood stand*

£300 - 500



6

8 Y Φ

**NINE VARIOUS IVORY NETSUKE**

Comprising a chick emerging from an egg, signed, *4cm long*, a man disguised as a turtle, signed, *4.5cm long*, a horse, signed, *4cm long*, a reclining mermaid, signed, *5cm long*, a small dog, signed, *4cm long*, a man blowing bubbles, signed, *5.3cm high*, an octopus in a pot, *5cm high*, a small standing horse, *4.2cm high* and a small figure, *3cm high*

£800 - 1,200

9

**A CARVED BONE SHRINE**

Meiji

Of pagoda form and formed in sections with twin doors above the galleried mid section opening to reveal a seated figure of Buddha, *24cm high*

£200 - 300

10 Y Φ

**THREE LARGE MARINE IVORY OKIMONO AND TWO OTHER OKIMONO**

Meiji

Comprising; an egg tester and his son, *26cm high*, a lady in a kimono with boy at her feet, *26cm high*, two boys below an Amida Buddha on rocky outcrop, *28cm*, a sectional ivory of a man with fan in hand, *26.5cm high*, and a solid elephant ivory of a male huntsman, signed, *15cm high*

£300 - 500

**Provenance**

Offered by the family of the late James Benzies, an Aberdeen antiques dealer whose George Street premises ceased trading in 1987.



14

11 Y Φ

**TWO IVORY OKIMONO**

Meiji

Each carved in marine ivory, one modelled as a worker with basket of bread and balancing young child in hat on shoulder, *31cm high*, the other as a fisherman carrying a long spear and with two playful children, *33cm high*

£400 - 600

12 Y Φ

**TWO IVORY OKIMONO**

Meiji

Each carved in marine ivory, both workers carrying young boys and baskets, one with a monkey sitting at his feet, *30.5cm and 31cm high*

£400 - 600

13 Y Φ

**TWO SECTIONAL MARINE IVORY OKIMONO**

Meiji

One a fisherman, carrying a basket full of fish on his back, *31cm high*, the other as a vegetable seller with a basket of root vegetables on his back, *32cm high*, both on hardwood stands, (damages)

£400 - 600

14 Y Φ

**A CARVED IVORY AND BOXWOOD FIGURE OF HOTEI**

By Katsumitsu, Meiji

The smiling standing immortal modelled with his attributes of fan and sack of abundance, signed *9.7cm high and displayed upon a separate wood base, wooden box*

£700 - 900



15

15 Y Φ

**A CARVED IVORY FIGURE**

Meiji

The seated man in relaxed pose enjoying a sip of sake, his lunch laid out on a tray before him, his chopstick and bento boxes neatly tidied below, signed with inset metallic plaque,

*8cm high and displayed on a lacquered wood scroll stand*

**£1,000 - 1,500**

Obtained in the mid 20th century in China/Japan and by descent to the current owner.

16 Y Φ

**TWO MARINE IVORY OKIMONO**

Meiji

One modelled as Fukurokuju with young child in arms and two storks looking up, *29cm high*, the other with a traveller with sack balanced on his head, with young boy reaching up,

*26cm high*

**£400 - 600**

17 Y Φ

**NINE VARIOUS IVORY FIGURE GROUPS**

Meiji

The first a fisherman and son in marine ivory, *23cm to top of hand*, a sectional marine ivory figure of a street vendor of fans and parasols with his son, *16.5cm high and fixed to a wood stand*, a sectional marine ivory of fisherman and son, the adult with net above shoulder, *17cm high*, a sectional marine ivory of a standing netsman, *30cm high*, another standing male figure, *17cm high*, a marine ivory figure of a harvester and son, *21cm high*, an elderly male figure holding two fish and a basket, *17cm high and affixed to a wood base*, a smaller father and boy group, *13.5cm high*, and an example of an old man with rat at his feet, *9cm high*

**£400 - 600**

18 Y Φ

**THREE MARINE IVORY OKIMONO WITH CHILDREN**

Meiji

One modelled as a fruit seller standing above a young boy reaching out, one with fruit pickers at a tree, the other holding a young child on his shoulder,

*29cm, 28.5cm and 26.5cm high*

**£400 - 600**

19 Y Φ

**A FINELY CARVED IVORY TUSK VASE AND COVER**

Meiji

The cover and vessel carved in deep relief all over with a variety of naturalistically portrayed flowers including chrysanthemum, iris, hydrangea, peony and hibiscus, unsigned,

*14.3cm high*

**£700 - 900**



19



21



20 Y Φ

**A MARINE IVORY OKIMONO OF FUKUROKUJU**

Meiji

Depicting an old man with long beard, birds and children close to him, signed,  
25.5cm high

£400 - 600

21 Y Φ

**A CARVED IVORY BRIDGE GROUP**

By Yamaji, Meiji

Featuring a cockerel, hen and young chickens, all with inlaid eyes, (damaged repair to cockerel tail feathers),  
42cm long and displayed on a wood base representing rockwork

£300 - 500

22 Y Φ

**A STAINED IVORY OKIMONO**

By Takeshi, Meiji

The elderly male figure with three drawered box over his shoulder and separately carved lantern held in his raised hand, signed within a red lacquer plaque,  
15.6cm high

£600 - 800

23 Y Φ

**AN ENGRAVED IVORY OF MOTHER AND CHILD**

Kikugawa School, Meiji

The standing lady in a kimono finely engraved with floral and diaper designs, affectionately embracing her young child,  
16cm high and affixed to a wooden stand

£700 - 900

24 Y Φ

**AN IVORY OKIMONO**

Meiji

The standing male figure in robes engraved with overlapping diaper patterns and inspecting the quality of his basket of eggs, raised on an oval base section, signature mark in red lacquer plaque,  
14.5cm high and on a wood base

£700 - 900

25 Y Φ

**A MARINE IVORY OKIMONO OF A FISHERMAN**

By Munetomo, Meiji

Depicting a man with basket of fish on his shoulder and pulling up two fish in his other hand, signed,  
15.8cm high

£300 - 500

26 Y Φ

**A MARINE IVORY OF JUROJIN**

By Seizan, Meiji

Seated in long robes holding a sharp knife in one hand with a tied scroll on his back and a basket of fruit at his foot,  
11cm high

£250 - 350



22



23



24



27

27 Y Φ

**AN IVORY BRIDGE GROUP DEPICTING THE LUCKY GODS**

Meiji

All seven of the immortal figures depicted with their attributes and interspersed with boy attendants, (break repaired at mid section and inset signature plaque now lacking)

*ivory 55cm long and displayed upon a naturalistic wave carved wood section*

**£1,000 - 1,500**

28 Y Φ

**AN IVORY OKIMONO**

By Gyokuyuki, Meiji

Carved as a huntsman holding onto a monkey in one hand and in the other hand a rifle, signed

*18.2cm high*

**£300 - 500**

29 Y Φ

**AN IVORY 'CLAMS DREAM' CARVING AND A SIMILAR NETSUKE**

One by Seigyoku, Meiji

The first modelled as a slightly opened clam shell depicting within figures at work before house and tree, the netsuke depicting within a seated figure with fan and attendants before pine tree,

*6.5cm across and 5.5cm across*

**£300 - 400**

30 Y

**A SMALL CARVED IVORY OWL**

Meiji

Modelled realistically with mother-of-pearl eyes, perched on a branch bearing an acorn, on oval base, signed,

*7cm high*

**£400 - 600**

31 Y Φ

**EIGHT IVORY NETSUKE, A BONE NETSUKE AND A SMALL SOAPSTONE CARVING**

Meiji

Comprising; a recumbent spotted deer with inlaid eyes, *5cm long*, a snail coiled up on a clam shell, *5cm long*, a frog on a lily pad, *4.5cm long*, five figural models in varying poses, the bone example modelled as a lion, *4cm long*, the soapstone carved as a monkey and its young, *4.3cm long*

**£300 - 500**

32 Y Φ

**A IVORY AND WOOD OKIMONO**

By Munejasu, Meiji

Carved as a male figure with walking staff in hand and carrying a large wicket basket upon his back, signed on a red lacquer plaque, *10.5cm high, with wood scroll stand*

**£400 - 600**

Obtained in the mid 20th century in China/Japan and by descent to the current owner.

33 Y Φ

**TWO MARINE IVORY OKIMONO**

Meiji

One modelled with old man seated with fan, a Tengu and young boy perched above, *36cm high*, the other with an old man carrying slender basket, partly painted in red and black, with gilt detailing, *27.5cm high*

**£400 - 600**



35



39

34 Y Φ

**THREE IVORY FIGURE GROUPS**

Meiji

One modelled as a chicken farmer, *12.2cm high*, a seated man holding a rolled up mat, *5cm high* and a serpent slithering over a pine tree with figures below, *8cm high*

£300 - 500

35 Y Φ

**A FIVE COMPARTMENT INRO, IVORY NETSUKE AND OJIME**

By Kajikawa, early 19th century

Decorated in gold, silver and coloured takamaki-e and gold hiramaki-e, with monkeys harvesting fruit from a tree, signature mark, *7.8cm high*, the netsuke modelled as a monkey carrying a Daruma figure on his back, inlaid eyes, unsigned, together with a coloured glass ojime bead, *4.2cm high*

£300 - 400

36 Y Φ

**TWO IVORY NETSUKE**

One by Tsukaji, Meiji

The signed example carved as a reclining male figure, *7cm long*, the other of a lady in a kimono embracing a male figure, *4cm high*

£250 - 350

37

**A WOOD NETSUKE OF TURTLES**

By Gekko, Meiji

A large turtle making a base for four smaller reptiles to clamber upon, forming a pyramid, the pupils inlaid; signed in a sunken oval reserve Gekko, *6.7cm high*

£500 - 600

38 Y Φ

**TEN ANTLER NETSUKE**

Edo/Meiji

A standing monk with leaf collar, in antler on ivory base, *10.8cm high*, a standing monk, *6.1cm high*, and on display stand, a Chinese warrior stroking his beard, *11.3cm high*, another sennin holding a rock and gnarled staff, a Chinese scholar with a peach, a lady with a small pot, a laughing sennin with double gourd over his shoulder, a group of Shoki fighting an oni, a puppy sitting on its haunches and a figure of Fukurokuju,

£300 - 500

Please note the first item catalogued has an ivory base, and is subject to CITES. The remaining items are not subject to CITES.

39

**A LACQUER FIVE COMPARTMENT INRO**

Early 19th century

Decorated in gold and silver takamaki-e and gold hiramaki-e, with two cormorant fishing below an irrigation gate, the reverse with a single cormorant drying its wings above rocks below, unsigned, *9.2cm high*

£300 - 400

40

**A FUKUGAWA FISH BOWL**

Meiji/Taisho

The interior decorated with a carp in dappled water, the exterior with a dragon among clouds on a scaled ground, in underglaze blue and gilt enamel with coloured details, *32cm diameter*

£300 - 500



41

## CERAMICS

41

### A SATSUMA VASE

By Ryozan, Meiji, Kyo-Satsuma school

Modelled as a tall pail or well, the upper portion decorated with overlapping diaper panels and mille-fleurs, the lower with a continuous scene of boys competing in a lakeside competition, signature mark below a Shimizu crest,

*24.7 cm high.*

£800 - 1,200

42

### A WHITE GLAZED FIGURE OF HOTEI

Meiji

The standing smiling deity with his sack of wealth at his side, raised on an intrinsic rocky base,

*30cm high*

£300 - 500

43

### A SATSUMA CIRCULAR WALL PLAQUE

Meiji

Decorated with dignitaries and attendants seated on a boat with canopy, mountains in the background below a moonlight sky, within a stylised foliate ground, signed

*39cm diameter*

£300 - 500

44

### A PAIR OF SATSUMA VASES

By Kinkozan, Meiji

Of cylindrical form, with relief moulded coiling dragon encircling the body and enamelled with Kannon and Rakan, signed Dainippon Kinkozan

*15cm high*

£250 - 350

45

### A PAIR OF LOTUS LEAF-SHAPED ENAMELLED DISHES

Meiji

The shaped open leaf with edges partly folded over, applied with pink open lotus flower, enamelled to the centre with band of red crested cranes in flight on a naturalistically moulded two tone green ground, the exterior with turquoise ground,

*32cm across*

£300 - 400



44

46  
**A PAIR OF SATSUMA SMALL VASES**

By Koyama Nampo, Meiji

Each of conical form and enamelled with complimentary continuous scenes of ladies and children in a garden, a band of flowers and leaves above the spreading foot, signed, 11.5cm high

£300 - 500

**Provenance**

Offered by the family of the late James Benzies, an Aberdeen antiques dealer whose George Street premises ceased trading in 1987.

47  
**A LARGE SATSUMA VASE**

Meiji

Of oviform and decorated with opposing panels of children playing around urn of flowers, the other scene depicting ladies on a terrace, on a densely decorated foliate ground and further shaped panels and butterflies and flowers, within formal borders, 56.5cm high

£300 - 500



46

48  
**AN ENAMELLED FIGURE OF A WARRIOR AND DRAGON**  
 Meiji

Modelled in battle, the warrior in gilt decorated attire, looking down at the dragon which coils around the rocky base, 22.3cm high

£150 - 200

49  
**A KUTANI JARDINIÈRE ON STAND**

19th Century

The twin handled urn painted with a continuous frieze of mythical figures riding on animals and vessels upon waves between formal borders, the pedestal base, decorated with deer amidst flowers and grasses, 71cm high overall

£300 - 500



51



55

## WORKS OF ART

50 \*

### A BLUE AND WHITE BOX AND COVER

Meiji, circa 1900

Of square section, painted in underglaze blue with an all-over design of peony heads interwoven among *karakusa* ('Chinese grasses'), the interior of the lid decorated with a skylark flying beneath a trailing branch of cherry blossoms, all raised on bracket feet, *unsigned*, (restoration), *14cm x 21.5cm x 21.5cm*

£600 - 700

51

### A PAIR OF CLOISSONNÉ VASES

Meiji

Of lobed oviform with two opposing and alternate panels depicting a phoenix on a lilac ground and butterflies on an ochre ground, all reserved on a metallic ground of floral and foliate medallions below a deep green patterned border, *31cm high*

£500 - 700



57

52

### A BRONZE BUDDHA AND OTHER METAL WARES

Meiji and earlier

Comprising a bronze seated Amida buddha, *16.5cm high*, a bronze mirror cast with birds in flight, *11.2cm diameter*, a similar smaller one, *9.7cm diameter*, a small pair of cloisonné vases, *11.5cm high*, a brass letter opener, the handle cast with an owl, *30cm long*, a mixed metal sword fitting modelled as rakan around a low table, *6.5cm long* and a lacquer two part hair ornament,

*15.2cm long*

£250 - 350

### Provenance

Offered by the family of the late James Benzies, an Aberdeen antiques dealer whose George Street premises ceased trading in 1987.

53

### A MIXED METAL KORO AND COVER

Meiji

Of squat oviform on three short supports, with butterfly ring handles and applied with sprigs of chrysanthemums, honeysuckle, daisies and further butterflies, the pierced cover with archaic symbols, *24cm high*

£300 - 400

54

### A BRONZE AND INLAID BOTTLE VASE

By Noburu Nogawa, Meiji

Of slender square section, inlaid with sprays of flowers and bamboo, signed and factory stamp

*20.2cm high*

£300 - 500

For details of the charges payable in addition to the final Hammer Price of each Lot please refer to paragraphs 7 & 8 of the Notice to Bidders at the back of the catalogue.



61 (part)

55

**A BRONZE FIGURE OF BENKEI**

Meiji

Standing in a belligerent pose, one leg outstretched holding a *naginata* sword, his robes cast with several crests including *maru-ni-chigai-takanoha-mon* (crossing pair of hawk feathers within a crest) and *Genjiguruma-mon* (cartwheel crest), *unsigned*; fixed on an integral wood stand, supported on four bracket feet pierced with stylized foliage.

*The figure 18cm high, the stand 5.5cm x 13.5cm*

£600 - 700

56

**A BRONZE FIGURE OF HOTEI**

By Hideyama/Shuzan, Meiji

The Lucky God modelled with his robe open over his big belly, he holds a sake bottle in one hand, his other raised to point upwards, signed to reverse, *27.5cm high*

£200 - 300

57

**A CLOISSONNÉ ENAMEL COFFEE POT AND COVER**

Meiji

Constructed from a Middle Eastern shape, worked entirely in gilt wire with an all-over design of the *takaramono* (treasures associated with the Seven Gods of Good Fortune) depicting auspicious magical objects associated with the *Shichifukujin* (Seven Gods of Good Fortune) comprising Daikoku's hammer, the hat and raincoat of invisibility, a feathered cape, wish-granting jewels, the purse of inexhaustible riches and scrolls interwoven among roundels of seasonal flowers including hollyhock, peonies, cherries, irises and plum, reserved on a whorl patterned ground, the spout and cover similarly decorated, the ring handle with white and pink cherry blossoms; *unsigned*.

*24.2cm high*

£600 - 800

58

**A SMALL CLOISSONNÉ VASE**

By Gin Bari, Meiji

Of slender ovoid form, decorated with an unwired pink prunus spray and a wired purple and green bird perched within, on an ivory ground, signed, *12.3cm*

£200 - 300

59

**A PAIR OF LARGE LONG STICH EMBROIDERED PANELS**

By ŌRyu, Meiji

The first depicting an interpretation of the floating gate at Itsukushima Shrine or similar before a mountainous pine landscape, the second depicting a waterwheel and weir within a bamboo grove, each with embroidered signature and seal, *each image 140cm x 89cm and within silk brocade surround*

£400 - 600

60

**UTAGAWA TOYOKUMI**

Circa 1810

A woodblock print depicting a bijin, *35cm x 24cm*

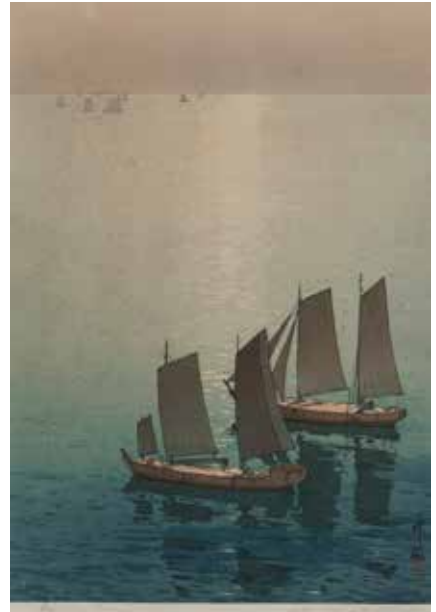
£600 - 800

61

**FOUR VARIOUS WOOD BLOCK PRINTS**

To include two by Kawase Hasui, one depicting mother with child on back under parasol in rainy street, *image 23.2cm x 35cm*, the other with temple by cherry blossom, *image 35.4cm x 23.3cm*, two by Shiro Kasamatsu, one depicting lady with parasol before a temple and cherry tree, *image 35.3cm x 23.7cm*, the other with kneeling lady serving drinks from a ladle, *image 35cm x 23.3cm*, *framed and glazed*

£400 - 600



63



59

62

**ANDO HIROSHIGE**

Circa 1850

A wood block print depicting a bijin in landscape, *image 24cm x 17cm and framed and glazed*

£600 - 800

63

**YOSHIDA HIROSHI,(1876-1950)**

An Oban woodblock print from the Inland Sea series, entitled Glittering Sea, signed in pencil, *image visible 15cm x 24cm, framed and glazed*

£600 - 800

**SOUTH EAST ASIAN ART  
LOTS 64 - 91**



64

64 \*

**A MAIDEN SEATED PLAYING A VINA**

Northern India, mid-19th Century  
Gouache and gold on glass, framed  
34.5cm x 24.5cm

£400 - 600

65 \*

**AN INDIAN RAGAMALA SCENE**

Rajasthan, probably Kotah, second half 19th century  
A princess seated on a terrace during a thunderstorm, gouache and gold on paper, yellow, floral and red borders,

29.5cm x 21.5cm

£400 - 600

**Provenance**

Formerly with Kasmin Ltd., London (according to a handwritten label on the backboard).



65

66

**A ROYAL AUDIENCE ON PALACE TERRACE**

Indian, 19th century  
A haloed prince and his courtiers at leisure, the architecture in white marble inlaid with floral designs, within patterned borders, gouache and gold on paper, image 35cm x 29cm, and framed and glazed

£250 - 350

67

**A LARGE BRONZE FIGURE OF BUDDHA, SHAKYAMUNI,**

Tibetan, 19th century  
The seated figure in loose robes with one single fingertip pressed to the base, this commemorates Shakyamuni's final victory over Mari and his attainment of Buddhahood, 42cm high

£400 - 600

**Provenance**

Offered by the family of the late James Benzies, an Aberdeen antiques dealer whose George Street premises ceased trading in 1987.



68

68

**A PRINCE ON A TERRACE WITH AN ATTENDANT HOLDING A MORCHAL GULER, LATE 18TH CENTURY**

gouache on paper, trimmed of its borders  
150 x 135 mm.

£400 - 600

**Provenance**

collection of the late Pearl King (1918-2015).

69

**A NOBLEMAN HOLDING A FALCON SEATED UNDER AN ARCH AT A BALCONY WINDOW PROVINCIAL MUGHAL, 18TH CENTURY**

gouache and gold on paper, laid down on an album page with gilt-decorated borders, verso a study of a spray of flowers painting 192 x 110 mm.; album page 325 x 230 mm.

£600 - 800

**Provenance**

collection of the late Pearl King (1918-2015).

For details of the charges payable in addition to the final Hammer Price of each Lot please refer to paragraphs 7 & 8 of the Notice to Bidders at the back of the catalogue.



70

**A LADY SEATED ON A TERRACE WITH TWO ATTENDANTS  
JAIPUR, MID-19TH CENTURY**

gouache and gold on paper, yellow and red borders  
233 x 170 mm.

£400 - 600

**Provenance**

collection of the late Pearl King (1918-2015).

71

**SRI RAGA: A PRINCE LISTENING TO TWO MUSICIANS ON  
A PALACE TERRACE, ONE OF THE MUSICIANS WITH AN  
ANIMAL'S HEAD, AN ATTENDANT HOLDING A MORCHAL  
STANDING TO THE LEFT**

**POPULAR MUGHAL, SOUTHERN RAJASTHAN, CIRCA 1700**  
gouache and gold on paper, buff border, *nagari* inscription in upper  
border *Rag shri shri rag* and the numeral 32, in mount  
258 x 189 mm.

£600 - 800

**Provenance**

collection of the late Pearl King (1918-2015), offered in the sale in  
these rooms, Bonhams, *Islamic and Indian Art*, 21st April 2015, lots  
180-196.

This interesting *ragamala* subject bears evidence of a style connected  
to Mughal artists but executed for Hindu patrons outside the Mughal  
court in Rajasthan. The *nagari* inscription on the outer border adds  
to this theory and the series was probably painted in the south of  
Rajasthan, perhaps at Mewar. For comparison with an earlier *ragamala*  
series known as 'The Gem Palace Ragamala' in the National Museum,  
New Delhi, see K. Ebeling, *Ragamala Painting*, Basel 1973, pp. 173-  
175. See also P. T. Rathbone and N. Heeramaneck *et al*, *The Arts of  
India and Nepal: The Nasli and Alice Heeramaneck Collection*, Boston  
1967, no. 149.

72

**A TEACHER, PERHAPS A CERTAIN BHAWANI DAS BAKHAWJI,  
SEATED ON A TERRACE SMOKING A HOOKAH, AN  
ATTENDANT STANDING BEHIND**

**DELHI, MID-19TH CENTURY**  
gouache and gold on paper, inner and outer borders profusely  
decorated with stylised floral motifs and cartouches in colours and  
gold  
220 x 175 mm.

£400 - 600

**Provenance**

collection of the late Pearl King (1918-2015); acquired at The Temple  
Gallery, Knightsbridge, London, in 1961-62 (according to a note on  
the backboard).

73

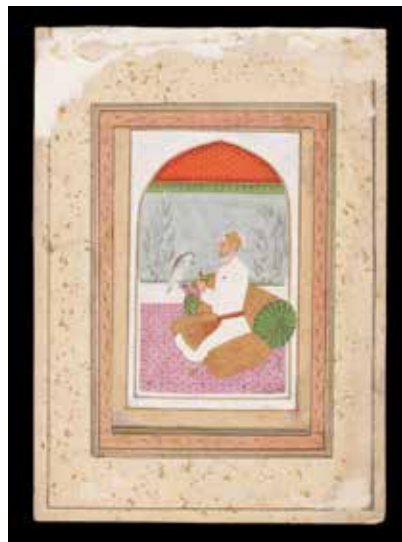
**A BIRD ON A BLOSSOMING BRANCH  
COMPANY SCHOOL, PROBABLY BENGAL, CIRCA 1840**

watercolour on paper, black margin rules  
208 x 150 mm.

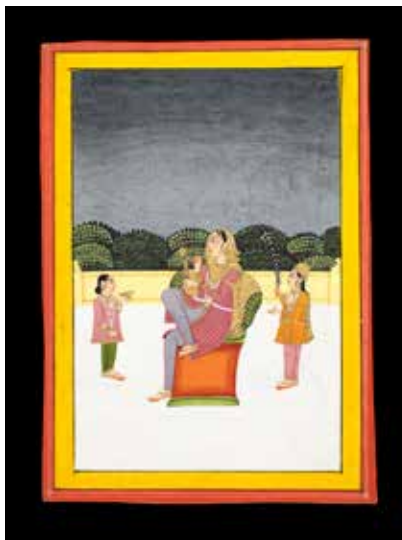
£400 - 600

**Provenance**

collection of the late Pearl King (1918-2015).



69



70



71



74

74  
**AN OFFICER BRANDISHING A SWORD  
 DECCAN, 18TH CENTURY**

Gouache and gold on paper, plain borders,  
 237 x 180 mm.

£400 - 600

**Provenance**  
 collection of the late Pearl King (1918-2015).



75

75  
**A NOBLEMAN, PERHAPS NASIR JANG, STANDING HOLDING A  
 SWORD AND A FLOWER  
 DECCAN, 18TH CENTURY**

gouache and gold on paper, red border, *nasta'liq* inscription verso, in  
 mount  
 280 x 184 mm.

£600 - 800

**Provenance**  
 collection of the late Pearl King (1918-2015).

76 \*  
**SUGAR APPLE (*MORINDA CITRIFOLIA*)  
 MANG HANG HO (AMERICAN, 20TH CENTURY)**

watercolour on paper, signed centre right, executed in 1995  
 420 x 540 mm.

£300 - 400

**Provenance**  
 The Collection of Evelyn and Peter Kraus.



80

77  
**TWO DRAWINGS: THE MUGHAL EMPEROR AURANGZEB  
 ENTHRONED; A MAIDEN, ZIB AL-NISA BEGUM, DAUGHTER  
 OF AURANGZEB, WITH ATTENDANTS  
 PROVINCIAL MUGHAL, SECOND HALF OF THE 18TH  
 CENTURY**

drawings with some use of colour on paper, the first with *nasta'liq* and  
*nagari* inscriptions, the second with *nasta'liq* inscription in border, the  
 second laid down on card, framed together  
 160 x 107 mm.; 237 x 171 mm.

£500 - 700

The inscriptions in *nasta'liq* script read: 'His Majesty Muhi al-Din  
 Awrangzib Padshah ibn Shah Jahan Padshah'; 'Zib al-Nisa Baygum,  
 daughter of Awrangzib 'Alamgir Padshah'.

78 \* Y Φ

**THREE FRAMED GROUPS OF FIVE VIEWS OF MONUMENTS IN DELHI, AGRA AND LUCKNOW  
DELHI OR AGRA, MID/LATE 19TH CENTURY**

gouache and gold on ivory, ovals, set in decoupage mounts with lattice work and floral cornerpieces in white on a pink ground, handwritten identifying inscriptions in English beneath each painting, framed and glazed

67 x 55 mm.; 53 x 42 mm.; 40 x 33 mm.; mounts 224 x 275 mm.(3)

£800 - 1,200

**Provenance**

The Collection of Evelyn and Peter Kraus.

The subjects are as follows: Chounsut Khumba ka Durwaza, Delhi; the Qutb Minar, Delhi (two views); Roumee Durwazah, Lucknow (two views); Chounsut Khumba, or sixty-four pillars near the Qutb; the Golden Temple, Amritsar; Madurdah, Multan; Kalee Masjid, Agra; the tomb of Salim Chishti at Fatehpur Sikri; the Jumma Masjid, Delhi; Nadir Shah's Masjid, Delhi; Shimshim Tabraaz ka Durgah, Multan; the Diwan-i-Khas, Delhi; the Koorseah Begum, Delhi.

79

**A SCENE FROM THE MAHABHARATA: VISHNU WITH DEVOTEES  
MEWAR, CIRCA 1730**

gouache on paper, yellow panel at top with two lines of text in *nagari* script, red border, framed

255 x 405 mm.

£600 - 800

80 \*

**A PRINCE ARMED WITH A KHATAR STANDING IN A LANDSCAPE  
MUGHAL, LATE 17TH/18TH CENTURY**

gouache and gold on paper

135 x 100 mm.

£800 - 1,200

**Provenance**

Formerly with Maggs Bros., purchased in 1984 (catalogue label on backboard).



78



78



78



81

81

**A DOUBLE-SIDED ALBUM PAGE, RECTO DEPICTING A MUGHAL NOBLEMAN, JA'FAR KHAN UMADAT AL-MULK SHAH JAHANI; VERSO, A NOBLEMAN, AMIR KHAN MIR MIRAN 'ALAMGIRI, ON HORSEBACK WITH AN ATTENDANT ALONGSIDE**

**PROVINCIAL MUGHAL, DECCAN, CIRCA 1685**

gouache and gold on paper, identifying inscriptions on painted surface in *nasta'liq* script, paintings laid down on an album page with inner border with gold floral motifs on a red or blue ground, outer borders with panels excised from Arabic and Persian manuscripts, gilt-decorated green outer border

*paintings 192 x 118 mm. and 210 x 162 mm.; album page 398 x 241 mm.*

£600 - 800

The portrait (recto) is identified as Ja'far Khan Umadat al-Mulk Shah Jahani. The Persian verses in *nasta'liq* script are from Jami's *Salaman va Absal*; the Arabic text in *naskhi* consists of prayers.

The equestrian portrait (verso) is identified as Amir Khan Mir Miran 'Alamgiri. The Persian verses in *nasta'liq* script are from Sa'di's *Bustan*.

82 \*

**GARCINIA MANGOSTANA (MANGOSTEEN) COMPANY SCHOOL, CALCUTTA, CIRCA 1850**

watercolour on paper, inscribed in pencil lower left *Mangosteen with the blossom*

*365 x 274 mm.*

£1,000 - 1,500

**Provenance**

The Collection of Evelyn and Peter Kraus.

83 Y Φ

**A SET OF SIX MINIATURE PAINTINGS ON IVORY**

Indian, 19th century

The six oval plaques depicting The Taj Mahal, The Qutab Minar and other monuments, *each plaque 5cm wide and all displayed in an ebonised and glazed frame*

£600 - 800

84

**A LARGE SILVER BOWL AND TWO SMALLER EXAMPLES**

Burmese, circa 1900

The large bowl chased with repeat designs of phoenix on a flamed pattern ground, a further flame patterned roundel under the rounded base, *11.2cm high, 21.7cm diameter, 16.5 troy ounces, 520 grams*, the mid size example, *7cm high, 13.2cm diameter, 3.5 troy ounces, 111 grams*, the smallest example with all over flame decoration, *4cm high, 8cm diameter, 2 troy ounces, 62 grams*

£200 - 300

85 Y Φ

**A PAINTED IVORY MINIATURE OF THE TAJ MAHAL AND A LACQUER TRAY**

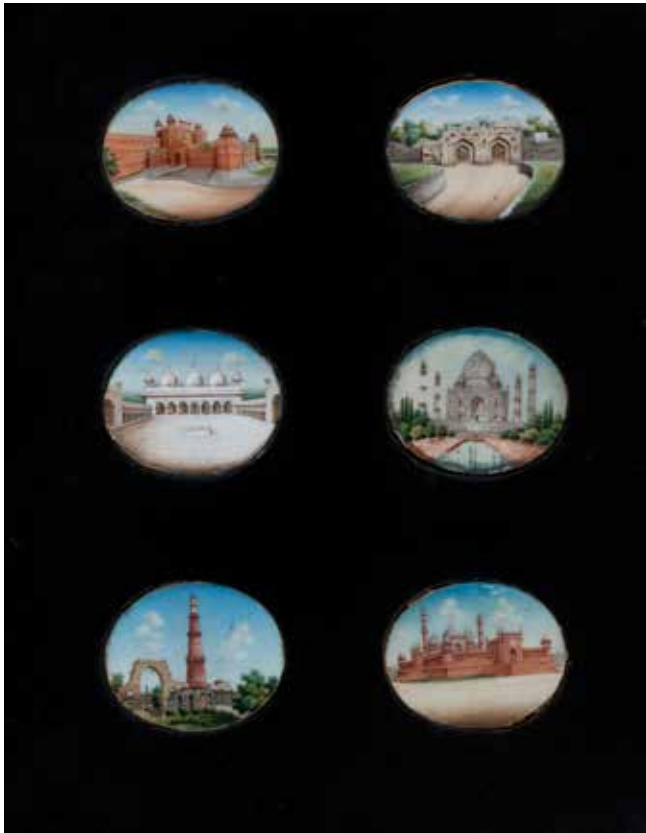
Indian, 19th century

The glazed oval painting within a carved ebony frame, *18.5cm wide*, together with a painted quatrefoil tray depicting animals and monsters, *26cm square*

£200 - 300

**Provenance**

Offered by the family of the late James Benzies, an Aberdeen antiques dealer whose George Street premises ceased trading in 1987.



83



89

86

**FIFTY SIX GANJIFA CIRCULAR CARDS**

Comprising thirteen with spade motif on red ground, eleven red hearts on yellow ground, eighteen white diamonds on green ground, fourteen white clubs on black ground, *each 7.6cm diameter*

£400 - 600

87

**THREE THAI BRONZE BUDDHA HEADS**

A large example, *28cm high*, and two others, *25cm high and 12cm high and each on wood display stands*

£600 - 800

88

**THREE BRONZE DEVOTIONAL FIGURES**

The first a Tara, the goddess of compassion, portrayed with an extra eye on her hand and forehead, her other hand raised holding a stem of lotus, seated in meditation on a lotus throne, *20.5cm high*, an Indian standing deity with flanking attendants before a mandorla on an intrinsic base, *25cm high* and a winged serpent deity, *21.5cm high*

£400 - 600

89

**A TEAK FOUR-FOLD DRESSING SCREEN**

Thai, 19th century

Carved and pierced all over with; to the pediments, a central seated Buddha with side attendants and to the main panels with dancing figures amidst scrolling foliage, *each panel 174cm high, 51cm wide*

£300 - 500

90

**A BRONZE STATUE OF SHIVA AND FIVE OTHER BRONZES**

The Shiva in urdhva tandava yoga pose, *22cm high*; another seated statue of Shiva on a lion, *21.5cm high*, three other standing attendants and another small Hindu deity, *tallest 21.5cm high*

£250 - 350

**Provenance**

Offered by the family of the late James Benzies, an Aberdeen antiques dealer whose George Street premises ceased trading in 1987.

91

**A CAIRO-WARE CASKET AND OTHER EASTERN METALWARES**

The casket with hinged cover and of square section, with all over decoration in mixed metals with prayer panels, cedar liner interior, *14cm high*, a Persian silvered ewer with central teardrop cartouche on a ground of scrolling foliage, *27cm high*, a Cairo-ware bottle vase, *23cm high*, a Cairo-ware pen tray, *26cm long* and a pierced metal hinged pomander simulating a pillow, *13cm wide*

£300 - 500

**Provenance**

Offered by the family of the late James Benzies, an Aberdeen antiques dealer whose George Street premises ceased trading in 1987.

92

**A BRONZE NATARAJA**

Indian, 19th century

The dancing four-armed figure of Shiva as Nataraja surrounded by a ring of fire and on an intrinsic base section, *32cm high*

£300 - 500

**Provenance**

Offered by the family of the late James Benzies, an Aberdeen antiques dealer whose George Street premises ceased trading in 1987.

# CHINESE ART

Lots 93 - 261



## IVORY

93 Y Φ

### A STANDING IVORY FIGURE OF HAN XIANGZI

19th Century

The standing female immortal in loose robes decorated with symbols of longevity, playing her magical flute and raised upon a carved platform,

*29cm high and attached to a separated wood base*

£800 - 1,200

94 Y Φ

### THREE EXPORT IVORY CARD CASES AND A JAPANESE EXAMPLE

19th century

The first all over carved with figures at various pursuits in a village scene, *10.5cm x 6.5cm*, a smaller similar example (damaged), *8.5cm x 4.5cm*, the third with a shaped cartouche to one side carved with figures in architecture, similar carved motifs within a cross shaped panel to the reverse, *9.5cm x 5.7cm*, together with a Japanese lacquer and shibuya example, (base lacking), *11cm high, 7cm wide*

£600 - 800

95 Y Φ

### A CANTON EXPORT IVORY PUZZLE BALL ON STAND

19th century

The outer ornate sphere carved with dragons, birds, flowers and clouds and enclosing approximately twelve further pierced spheres, displayed upon a figural stand, (slight damages), *28cm high overall, original fitted box*

£300 - 400

96 Y Φ

### A PAIR OF SMALL CANTON EXPORT IVORY BRUSH POTS

19th century

The slender cylindrical vessels carved with two opposing shaped panels enclosing dignitaries at leisure in pagodas amid pine and willow trees each on a pierced foliate base,

*10.5cm high*

£250 - 350

97 Y Φ

### A CANTON EXPORT IVORY PAGE TURNER

19th century

The handle carved and pierced to the front and back as the immortal He Xian Gu and boy, the blade as scrolling lotus on a diaper ground, *28cm long*

£150 - 200

98 Y Φ

### AN EXPORT IVORY BRISÈ FAN

19th century

Each pierced wand carved intricately forming part of a continuous scene of dignitaries and attendants in a landscape with pagodas amid willow and prunus trees, the solid guard sticks carved with similar scenes,

*18.7cm long*

£300 - 500



93

99 Y Φ

### AN IVORY SNUFF BOTTLE AND A SEAL

Early 20th century

The bottle with two relief carved panels featuring figures in garden setting spaced by a dragon to each side ascending to the shoulder, *bottle 6.5cm high* and a seal modelled as a dog with elixir issuing from his mouth, the base with archaic script engraved seal mark, *8cm high*

£250 - 300



100

### JADES & HARDSTONES

100

#### **A JADE JAR AND COVER**

Qianlong seal mark but later

The domed cover with pointed finial and carved with cloud motifs, the vessel carved with a continuous scene of two scholars within a landscape of pine and bamboo, *8cm high*

£400 - 600

101

#### **A JADE FIGURE, A JADE BELT BUCKLE AND A JADE BI DISC**

A boy holding a ruyi fungus over his shoulder, in pale green jade with brown tones, *7.9cm high, and with wooden stand*, together with a belt buckle carved in relief with a chilong, in green jade speckled with white inclusions, *17.3cm long*, and a bi disc decorated by stylised archaic chilong in low relief, in chicken-bone jade, *14.5cm diameter*

£200 - 300



102

102

#### **A JADE MOUNTAIN GROUP**

19th/20th century

The stone of mixed green and russet tones, carved in deep relief to one side, with two scholars within a mountainous landscape, and to the other with two figures at leisure by a waterfall, *10.5cm high*

£400 - 600





103

103

**A CARVED JADE CUP**

19th/20th century

Simulating the shape of a rhinoceros libation cup, The grey green stone with russet skin utilised in highlighting the carved lotus flower decoration, the flower stems forming the open work foot of the vessel, simulating the shape of a rhinoceros libation cup, carving 7cm high and displayed upon a wood stand

**£300 - 500**

104

**A JADE PIERCED AND CARVED CIRCULAR PLAQUE AND TWO JADEITE PENDANTS**

19th/20th century

The circular plaque carved and pierced with five boys amid scrolling foliage and mounted as a brooch, 6cm diameter, a near white jadeite pendant carved with fish amid waves, 4.2cm high together with a deep green carved and pierced pendant featuring gourds and foliage, 3.5cm high

**£300 - 500**

**Provenance**

Offered by the family of the late James Benzies, an Aberdeen antiques dealer whose George Street premises ceased trading in 1987.



106

105

**A CARVED JADE BIXIE**

The mythical beast in a mottled green stone, crouching on all fours, 5.3cm high, 13.5cm long

**£250 - 350**

106

**A JADE EWER AND COVER**

19th/20th century

Of rectangular section of mainly even green tone, the detachable cover with a single chilong dragon upon a rectangular form finial, the vessel with rectangular section spout attaching to the body with another smaller dragon, the handle carved as chilong dragon ascending the vessel picked out in variegated grey stone, raised on a hollowed stepped foot, 14.7cm high and displayed upon a wood carved stand

**£1,500 - 2,000**

Obtained in the mid 20th century in China/Japan and by descent to the current owner.



107



109



107



109

107

**A FAMILLE ROSE SNUFF BOTTLE**

Qianlong seal mark, circa 1800

Enamelled to one side with figures in a landscape and to the reverse with a dragon boat in river landscape, sides and neck with formal borders in underglaze blue,

*bottle 6cm high*

**£500 - 700**

108

**THREE BLUE AND WHITE SNUFF BOTTLES,**

19th century

A cylindrical example painted with peony and rockwork, *bottle 7.5cm*

*high*, another with scholar and attendant, *bottle 7cm high*, the final example of pear shape and painted with scholars in a garden setting

to one side and a boatman to the other, *bottle 5.5cm high*

**£300 - 500**

109 Y Φ

**A MOULDED SNUFF BOTTLE**

Chenghua mark, early 19th century

The bottle decorated in famille rose enamels and depicting a continuous river scene with immortals in a boat and upon rocks,

*bottle 7cm high*

**£250 - 350**

110

**A JADE SNUFF BOTTLE AND TWO OTHER HARDSTONE BOTTLES**

19th century

The jade of mottled green hue, *bottle 5.2cm high*, a bloodstone bottle

raised on a footrim carved with flowering peony to one side, *bottle*

*5.4cm high* and a shadow agate bottle of oviform,

*bottle 5cm high*

**£300 - 500**



111



114



112



114

111

**A MOULDED FAMILLE ROSE SNUFF BOTTLE**

Qianlong seal mark in red

The bottle depicting immortals in a garden setting on one side, and to the reverse figures hunting for turtle from a boat, *bottle 7.2cm high*

£800 - 1,200

112

**A RELIEF MOULDED SNUFF BOTTLE**

Jiajing four character reign mark

With opposing panels of a figure and an attendant on one side, the other with figures and horse in garden setting on aubergine ground (small single chip to rim), *bottle 8cm high*

£500 - 800

113 Y Φ

**TWO IVORY SNUFF BOTTLES**

Early 20th century

A tall flattened oviform example depicting a crane beneath bamboo to one side and poetic text to the other, *bottle 6.3cm high*, the other of rectangular form and engraved with female figures in garden to one side and a parrot in tree to the other, poetic text to all four sides, red seal mark to base, *bottle 7.8cm high*

£250 - 350

114

**AN INSIDE PAINTED SNUFF BOTTLE**

By Yan Yutian, late 19th century

Of flattened upright rectangular form on an oval footrim and painted to one side with a vase issuing prunus, a basket containing finger citron and a further vase issuing bamboo, the reverse with insects and vegetables, signed, *bottle 6cm high*

£300 - 500

115 Y

**A SMOKEY QUARTZ SNUFF BOTTLE**

19th century

Of rectangular form, each side with a plain raised panel, *bottle 5.5cm high*

£250 - 350

116

**A JADE SNUFF BOTTLE 19TH CENTURY**

19th century

Of rounded rectangular section on a raised footrim carved to the shoulders with archaic mask and ring handles, *bottle 7cm high*

£250 - 350



120

117 Y Φ

**A CARVED ROCK CRYSTAL SNUFF BOTTLE**

19th century

The slender body on a neatly finished footrim and carved in relief with a small boat beneath a gnarled pine,  
*bottle 6.8cm high*

£300 - 400

118

**TWO GLASS SNUFF BOTTLES**

19th/20th century

Each of flattened oviform and on raised footrims, the first imitating jadeite, *bottle 6.7cm high*, the other of dark amber colour,  
*bottle 6.5cm high*

£250 - 350



121

119

**THREE OVERLAID GLASS SNUFF BOTTLES**

A 19th century clear bubble-suffused red overlay example for the Islamic market, *bottle 6.2cm high*, another similar 19th century example with green overlay and carved with birds in branches, *bottle 6cm high* and a two colour overlaid bottle decorated with flowers issuing from a basket on a opaque white ground,  
*bottle 6cm high*

£250 - 350

120

**A MOULDED FAMILLE ROSE SNUFF BOTTLE**

Qianlong seal mark in red

Modelled in the form of a Buddhistic lion holding its young and raised upon an ingot of cash,  
*bottle 5.5cm high*

£250 - 350



122

121

**A JADE SNUFF BOTTLE AND A PLAQUE ON STAND**

The bottle shaped as a gourd, with foliage around the shoulder area and further entwined tendrils around the foot rising up the sides, the sides portraying two butterflies highlighted with russet inclusions in the stone, *bottle 5cm high*, together with a carved and pierced jade plaque formed as a butterfly with outstretched wings, the wings containing cash symbols,  
*plaque 5cm high and displayed upon a carved wood stand*

£300 - 500

122

**TWO JADE PEBBLE SNUFF BOTTLES**

19th century

The first with a grey to lavender tone, *bottle 6.5cm high*, the second of celadon green hue to one side and mottled russet colour to the reverse,  
*bottle 6.6cm high*

£500 - 700



123



125

## BRONZE & METALWARE



124

### 123 A LARGE BRONZE INCENSE BURNER AND COVER

19th century  
Of oviform with twin upright lug handles and on supports with ruyi head details to the knees and hoof feet,  
*36.5cm high, weight 6053g*

£400 - 600

### 124 A BRONZE SEATED TARA

Tibetan 18th/19th century  
The goddess of compassion elegantly cast seated in lalitasana on a lotus pedestal, the hands in varada mudra and vitarka mudra, a lotus rising to the shoulder on one side, the face framed by a tiara and wearing disc earrings and other jewels, sealed base, (fingers lacking),  
*17cm high*

£700 - 900

### Provenance

Offered by the family of the late James Benzie, an Aberdeen antiques dealer whose George Street premises ceased trading in 1987.



127

### 125 A SILVER WIRE INLAID BRONZE INCENSE BURNER

17th/18th century  
The lobed trefoil bowl with twin upright lug handles raised on three circular section supports, inlaid to handles, body and supports with taotie mask designs and scroll-work,  
*18.6cm high, weight 1171g*

£1,000 - 1,500

### 126 A SMALL BRONZE TARA

Tibetan 19th century  
Seated in lalitasana on a double-lotus pedestal, the hands in varada mudra and vitarka mudra, the benevolent face framed by an intricate tiara, necklace and earrings, applied gold pigment to face, hands and feet, sealed base,  
*16.5cm high*

£300 - 500

### 127 A GILT BRONZE TARA

Tibetan, 19th century  
The goddess of compassion sits at ease on a lotus throne adorned with jewellery and with an ornate crown, closed base  
*14.8cm high*

£800 - 1,200

### 128 A DECHENG CLOISSONNÉ ENAMEL VASE AND AN ENAMEL BOX AND COVER

Late Qing/Republic  
The bottle vase with all over scrolling lotus design on a turquoise ground, *23.5cm high*, the Canton export box with hinged cover decorated with a panel depicting a warrior on horseback over a ground of scrolling lotus and raised on bun feet,  
*9.8cm wide*

£300 - 400



129



130



130 (mark)

129

**A PAIR OF BRONZE LION-DOGS**

Tibetan 19th century

Cast in two parts and joined about the waist, standing on all fours, with head raised, 29.5cm high

**£500 - 800**

**Provenance**

Offered by the family of the late James Benzies, an Aberdeen antiques dealer whose George Street premises ceased trading in 1987.

130

**A BRONZE INCENSE BURNER**

Xuande mark in zhuanshu script but 18th century  
Of compressed bombÉ form with side loop handles, 6.2cm high, 17.2cm wide, weight 990 grams

**£3,000 - 5,000**



131

131  
**A SINO-TIBETAN BRONZE FIGURE OF USNISAVIJAYA AND A THAI BRONZE SEATED BUDDHA**

19th century

The figure seated at ease on a double-lotus plinth, the three-faced head crowned with an elaborate tiara and the figure with various jewels, the eight arms in various mudra and holding various attributes and implements, *19.5cm high*, the figure of Buddha seated on a lotus throne,

*17cm high*

**£500 - 700**

132

**A BRONZE BUDDHIST LION INCENSE BURNER**

19th century

The mythical beast standing on four feet, the smooth body with elaborate bifurcated tail, the head forming the cover and modelled with scrolling mane and opened jaw,

*12cm high*

**£250 - 350**



133

**A COPPER ALLOY FIGURE OF AMITAYUS**

Nepalese, 19th century

The figure modelled in meditative pose upon a double throne and holding forth a beggar's bowl,

*14.5cm high*

**£400 - 600**



134

134

**A GILT-BRONZE CEREMONIAL ALTAR VESSEL, XU**

Engraved Qianlong seal mark and of the period

Of oval section with twin side mask and tongue handles, the rim with a relief key-pattern border above a band of repeat losenge design and ribbed mid section, the stem with wave design above archaic scrolls, the domed hollow foot with further registers of repeat geometric design,

*14.5cm high, 28.7cm wide, 18cm deep, 4595.6 grams*

**£4,000 - 6,000**

Offered for sale by the great grandniece of a Dr Grant of the Scottish town of Wick.

Dr Grant, a medical doctor, was by family tradition, present in China around 1900 and brought this altar vessel home to Scotland along with other items.





135

135

**A POLISHED BRONZE CEREMONIAL ALTAR VESSEL, DOU**

Qianlong seal mark and of the period

The stem bowl raised on a high splayed hollow foot, cast with decorative bands of curving and archaic geometric patterns, 17.5cm high, 16.3cm diameter, weight 3520 grams

**£1,200 - 1,500**

Offered for sale by the great grandnephew of a Dr Grant of the Scottish town of Wick.

Dr Grant, a medical doctor, was by family tradition, present in China around 1900 and brought this altar vessel home to Scotland along with other items.

Compare with a similar example sold at Christie's London, 20 September 2011.



136



142 (part)

## WORKS OF ART

136

### ATTRIBUTED TO ZENG LONGSHENG (1901-1964)

Early 20th century

A painted biscuit porcelain head of a young Luohan, marked twice in red CHINA, 10cm high

£800 - 1,200

137

### A SOAPSTONE BRUSH POT

Early 20th century

Of cylindrical form and carved in relief with a continuous scene of scholarly figures in a mountainous landscape, cranes in flight above, 16cm high

£250 - 350

138

### A CINNABAR LACQUER JAR AND COVER

19th/20th Century

Of oviform, the cover top decorated with a scholar and attendant in a garden setting, the sides with scrolling lotus, the vessel with further scrolling lotus to the shoulder, the jar sides deeply carved with a continuous frieze of scholars in landscape, 15.5cm high and displayed upon a wood stand

£300 - 400

139

### A COLLECTION OF SILK AND OTHER TEXTILES

Including; a large red ground fringed shawl embroidered with peacock amidst flowing borders, 137cm square, an ivory ground silk embroidered with swallows, 48cm square, and five other textile fragments

£150 - 200

140

### A GILT BRONZE COURT BELT BUCKLE AND HASP

18th/19th century

The buckle terminal modelled as a dragon head with further chilong dragon to the upper surface, complete with the original buckle hasp, set with a semi-precious red gemstone, combined length 13cm

£300 - 500

141

### A COLLECTION OF MOTHER-OF-PEARL GAMING TOKENS

Early 19th century

Sixty five rectangular examples, 7cm x 2.5cm, Sixteen rectangular, 4.5cm x 3.5cm, one rectangular, 2cm x 6.5cm, ten circular, 4.2cm diameter, seventeen circular, 4cm diameter and two small shaped oval examples

£250 - 350

142

**A FINELY PAINTED AND EMBROIDERED SILK FAN IN FITTED CASE AND FIVE OTHER FANS**

19th and 20th century

The silk example with a finely painted scene to one side depicting a lady on horseback with various attendants in a garden setting, the reverse embroidered with birds, insects and flowering branches, the guard sticks and wands in gilded black lacquer, 30cm long, a smaller silk and black lacquer fan embroidered to both sides with birds and flowers, 24cm long, a sandalwood brisé pierced fan, 18.5cm long, a silk fan depicting to one side birds with real feathers perched on branches flanking a central urn, gilt decorated wands and guard sticks, 29.5cm long, a Japanese fan decorated with birds and flowers on silver paper, plain wood guard sticks and wands, 35cm long and one European decorated fan, probably Italian, 23.5cm long

£300 - 500

143

**A BAMBOO BRUSH POT ON STAND**

19th century

The natural section of bamboo carved to the flat rim with repeat cloud design, the vessel further carved and undercut to each side with two figures playing 'go' in a pavilion below a mountainous river landscape populated with scholars and other figures, probably depicting a scene from the Lanting Xu, 'Orchid Pavilion Preface', (damages), 16.7cm high and raised on a hardwood stand carved and pierced to simulate rockwork

£300 - 500

144

**A BAMBOO BRUSH POT**

19th century

The natural section of bamboo carved to the flat rim with repeat cloud design, the vessel further carved and undercut to one side with a scholar teaching students the art of painting below a mountainous river landscape populated with scholars and other figures, the reverse shows the group ascending a mountainous path, raised on a hardwood stand carved and pierced to simulate rockwork, probably depicting a scene from the Lanting Xu, 'Orchid Pavilion Preface', (both vessel and stand with damages), 16.5cm high

£100 - 200

145

**A SILK EMBROIDERED PANEL**

19th century

The glazed rectangular panel embroidered with mating pairs of birds including peacocks, chickens, swallows and other birds below and around a tree in blossom and within a carved and pieced scroll frame, having once formed part of table screen, 56cm x 48cm overall

£800 - 1,000

146

**A SILK EMBROIDERED THANGKA**

The image shows Buddha bearing medicine and seated upon a lotus throne, fruits in a bowl at his feet, image 55cm x 40cm

£400 - 600



145



146



147



148



149

147

**A HUANGHUALI BRUSH POT**

19th century

Carved and undercut in relief with an attendant waiting upon figures playing go beneath a pine tree and to the reverse with figure on horseback in mountainous landscape, 17cm high

£800 - 1,200

148

**A CINNABAR LACQUER VASE**

19th century

Of lobed oviform, the upper register with six down-pointing leaf shaped panels of scrolling foliage, the main body panels each depicting different fruit and flowers, raised upon a domed foot, 31cm high

£800 - 1,200

149

**TWELVE BUDDHIST DEVOTIONAL IMAGES**

Coloured pigments on material, Himalayan/ Tibetan, 19th century

Each fabric panel mounted on card and behind a plain blue slip, a central image of enthroned warrior figure with five further figural attendants along with six further images depicting Mahakala Shadbhuja portrayed upon varying mythical beasts and carrying various attributes and below a roundel depicting Buddha, each image 60cm x 30cm

£600 - 800

150

**A CLOISONNÉ VASE**

20th century

The baluster form vase with four shou characters upon a ground of scrolling lotus and bats, raised on an integral base with bracket feet (damages), 16.5cm high

£300 - 500

151

**A SMALL HARDSTONE DECORATED TABLE SCREEN**

Circa 1900

The rectangular stone panel with applied motif of tree peony issuing from rockwork in various coloured hardstones, panel size 17.5cm x 12cm, 24cm high

£200 - 250

152 Y Φ

**AN IVORY IMMORTAL AND TWO OTHER IVORY CARVINGS**

Late 19th/early 20th century

A tusk carving of L, Dongbin, depicted standing with his sword behind his back, 23.5cm high, together with a child Krishna playing his flute among waves for a duck, 16cm high, and a clam-shell shaped carving showing Krishna praying for his herd among the trees, 6.7cm long

£250 - 350

For details of the charges payable in addition to the final Hammer Price of each Lot please refer to paragraphs 7 & 8 of the Notice to Bidders at the back of the catalogue.



153

153

**A LARGE CARVED WOOD FIGURE OF LIU HAICHAN**

The smiling figure reclining in loose robes, his three legged toad at his side, raised upon on separate base section, 47cm wide overall

£250 - 350

**Provenance**

Offered by the family of the late James Benzies, an Aberdeen antiques dealer whose George Street premises ceased trading in 1987.

154

**A CINNABAR LACQUER TABLE-TOP CHEST**

19th century

The rectangular top with raised key pattern bronze handle, the top and sides with all over diaper pattern within key pattern borders, the detachable front panel with bats, fruits and precious objects on a key pattern design, opening to reveal four drawers carved with foliate panels, the rear panel a mirror of the front, all raised on an integral black lacquer base with bracket feet, (various damages),

25cm high overall

£800 - 1,200

**Provenance**

Offered by the family of the late James Benzies, an Aberdeen antiques dealer whose George Street premises ceased trading in 1987.

155

**A SANDAL WOOD CARD CASE AND A BAMBOO BRUSH POT**

The case with typical all over carved decoration of figures in landscape and gardens, 11cm high, the brushpot with single motif of flowering lotus and to the reverse with inscribed poetic script, seal mark, 13.6cm high

£250 - 350

156

**FOUR FROM A SET OF SILK EMBROIDERED PANELS**

19th century

Depicting an incomplete scene of a large pagoda in garden scene populated with figures, birds and animals,

Each panel 180cm x 42.5cm, framed and glazed

£500 - 800



154



154 (detail)



157

**157**  
**A SILVER FIGURE OF SHOULAO AND STAFF**

By Feng Xianghe, Shanghai, 19th century  
 The standing immortal smiling and in loose robes, holding out in one hand his magical peach and in his other a detachable dragon-topped gnarled staff,  
*28cm high overall, weight 16.7 troy ounces, 520 grams*

**£1,000 - 1,500**

Obtained in the mid 20th century in China/Japan and by descent to the current owner.

**158**  
**A PAIR OF UNUSUAL SILVER STEM VASES ON STANDS**

Marks indistinct, 19th century  
 Each with a curving foliate rim and chased foliate designs to one side and applied with leaves, raised upon galleried rectangular base section behind a spotted deer modelled on all fours and with a ruyi stem in its jaws, (slight losses),  
*25cm high*

**£1,200 - 1,800**

**Provenance**

Offered by the family of the late James Benzies, an Aberdeen antiques dealer whose George Street premises ceased trading in 1987.

**159**  
**A PAIR OF SILVER STEM VASES AND A CARVED HARDWOOD FIGURE OF AN IMMORTAL**

Vases by Luen Wu, Shanghai  
 The trumpet shaped vases with foliate form rim and inset glass liners, chased designs of flowering iris by water, *19.3cm high and displayed on circular hardwood stands, weight of silver 6.7 troy ounces, 210 grams*, together with a carved hardwood figure of the immortal Lu Dongbin,  
*30.5cm high*

**£400 - 600**



158

**160**  
**A SILVER PART TEA SERVICE**

Circa 1900  
 Comprising a teapot with hinged lid, a covered sugar basin and a cream jug, all with faux bamboo handles and opposing panels of dragon and bamboo on a hammered ground together with three matching cups and saucers and three associated teaspoons,  
*height of teapot 11cm high, weight of teapot 6.9 troy ounces, 216 grams, weight of full set 10.67 troy ounces, 649 grams*

**£400 - 600**

**161**  
**A COLLECTION OF SILVER**

19th Century  
 Comprising a wooden inkstand fitted with a pair of inkwells with hinged covers, the stand with silver mounts raised on bun feet and mark for maker TS, *15.5cm across*, a pair of shell comports, the plateau with applied silver dragon in relief and raised on tripod faux bamboo supports, *7cm*, a pierced solifleur by Wan Hing, (damages), *14cm high* and a pair of walking cane pommels, *6cm high*

**£250 - 350**

**Provenance**

Offered by the family of the late James Benzies, an Aberdeen antiques dealer whose George Street premises ceased trading in 1987.

**162**  
**A SILVER BOWL**

By Wang Hing, Canton and Hong Kong, dated by inscription 1901  
 Of circular section and chased of all over design of flowering prunus on a cracked ice ground, the spreading foot rim bearing makers marks and with presentation inscription, S.C.L.T. TOURNAMENT 1901 "B" CLASS SINGLE HANDICAP/WON BY R.T. Reid,  
*6.6cm high, 12.1cm diameter, weight 9.4 troy ounces, 293 grams*

**£300 - 400**

For details of the charges payable in addition to the final Hammer Price of each Lot please refer to paragraphs 7 & 8 of the Notice to Bidders at the back of the catalogue.



163

163

**A LARGE SILVER REPOUSSÉ DECORATED BOX AND COVER**

By Tai He, probably Bangkok, 19th century

Of lobed circular form and constructed in heavy gauge silver, possibly a dumplings/dim sum box, the cover divided into ten radiating panels, each with a differing design including; dragon, mahout on elephant, cranes, tiger and birds, around a central roundel depicting of a pair of fenghuang flanking a flowering tree peony, the cover sides and box sides each with ten further relief decorated panels of a similar nature, raised on three bracket feet, marked with workshop Bing Ji and maker Tai He,

16.5cm high, 22cm diameter, weight 70 troy ounces, 2172 grams

**£2,000 - 3,000**

Footnote by Adrien von Ferscht.

This box is undoubtedly an item of great importance within the context of the vast 285-year repertoire of Qing Dynasty Silver [aka Chinese Export Silver]. Indications are that the box was made in Bangkok - the method of construction using panels of silver, the heavy gauge of silver used and the solder work point to this. At the time of manufacture Siam [Thailand] was a vassal [tributary] state of China; Chinese silversmiths operated in almost all of the vassal states in the 19th century. While some experts would classify this box as being Straits Chinese Silver, I am always of the opinion that silver created in vassal states in the Chinese style is just as much "Chinese" as an item made in China-proper; I would classify this box as being Qing Dynasty Silver.

Silver items made by Bangkok-based Chinese silversmiths were often created using particularly heavy gauge silver; at over two kilograms, this box is no exception and it is obvious that the artisan Tai He 泰和 was a master silversmith, making the workshop of Bing Ji 炳记 a purveyor of quality. Sadly, no other item from this maker has been documented, making this box a rare item.

*Adrien von Ferscht is considered a world expert on Qing Dynasty silver. He is an Honorary Research Fellow at University of Glasgow and is a Member of the Academic Committee of the Academy for International Communication of Chinese Culture at Beijing Normal University. His "Definitive Collectors' Guide of Chinese Export Silver" is recognised by the majority of auction houses around the world as the definitive guide to this highly complex silver category. His work is now recognised across China and is recognised by the State Administration of Cultural Heritage 国家文物局 under the jurisdiction of the Ministry of Culture in the People's Republic of China.*

For details of the charges payable in addition to the final Hammer Price of each Lot please refer to paragraphs 7 & 8 of the Notice to Bidders at the back of the catalogue.



163 (detail)

164

**A SILVER PARASOL HANDLE**

Tapering with floral chased bands, the knob finial applied with a longevity character, 28cm long

**£250 - 350**

165

**A PAIR OF SILVER AND ENAMEL BUDDHISTIC LIONS**

Both seated with foliate decorated green collar with loose bell, the female with left paw on a young cub, the male with right paw on brocade ball, the stepped base with band of foliate decoration in turquoise and royal blue, 12cm high

**£200 - 300**

166

**A FOLIO OF PITH PAINTINGS**

19th century

Comprising; four depicting torture, three boats and three tea merchant scenes, (some damages)

folio 36cm x 24.5cm

**£250 - 350**

167

**A PAIR OF SMALL RUGS**

19th century

Both with a central circular panel enclosing a single carp, one rug with an orange carp, the other with a grey example, within a floral and foliate border on a blue field, approximately 178cm x 93cm

**£400 - 600**



168

## CERAMICS

168

### A BLUE AND WHITE JAR AND COVER

Kangxi six character mark within a double circle

The flat topped cover enamelled with banana leaves to the top surface and ribbon tied objects to the side, the vessel with a continuous scene portraying courtly figures and an attendant bearing fruits, all on a terrace, (imperfections), *27.5cm high*

£1,200 - 1,800

169

### TWO BLUE AND WHITE VASES

Circa 1900

A rouleau vase bearing four character mark, decorated all over with lion dogs amidst clouds and below a key pattern rim, *25.7cm high*, together with a vase decorated with two confronting dragons flanking a flaming pearl amidst clouds and flames, *17.3cm high*

£200 - 300

170

### A COLLECTION OF BLUE AND WHITE PLATES

18th century

Comprising a charger painted with two figures on a bridge, *40.7cm diameter*, (restored), five octagonal plates of two sizes depicting varying landscape scenes, *19.2cm and 21.7cm diameter*, two similar floral decorated plates, *27.5cm diameter*, eleven similar plates of varying floral designs, *approximately 23cm diameter* and four various saucers, (some damages)

£300 - 500

171

### A BLUE AND WHITE VASE AND COVER

Bearing Kangxi six character mark but circa 1900

The cover with scrolling foliage, the neck painted with flowering tree peony, the body depicting a pair of phoenix amidst scrolling foliage, *26.5cm high*

£200 - 250

172

### A NEAR PAIR OF TALL BLUE AND WHITE VASES

Circa 1900

Of oviform and applied with lion dog handles, decorated with immortals in garden setting before a fence, on a pale celadon ground, *60cm high*

£400 - 600

#### Provenance

Offered by the family of the late James Benzies, an Aberdeen antiques dealer whose George Street premises ceased trading in 1987.

173

### TWO BLUE AND WHITE GINGER JARS AND COVERS AND THREE VASES

19th/20th century

The two jars decorated with prunus on a fish-scale ground, one with four character Kangxi mark, *larger one 20.5cm high*, a sleeve vase decorated with herons in lotus pond in two opposing panels on a dragon and cloud ground, four character Kangxi mark, *26cm high*, a crackle ware jar and cover with warrior design between simulated copper bands, *26.5cm high* together with a gilt decorated famille noir baluster vase decorated with a pair of phoenix, *25.5cm high*

£250 - 350

#### Provenance

Offered by the family of the late James Benzies, an Aberdeen antiques dealer whose George Street premises ceased trading in 1987.

174

### A BLUE AND WHITE KENDI

17th century

Of globular form with domed foliate spout, painted with opposing scenes of bird perched on rockwork amid peony sprays, the shoulder with scrolling band and the neck with band of upright leaves, with later white metal mounts, *19.8cm high*

£300 - 500

175

### A BLUE AND WHITE PLATE

Kangxi

Decorated to the centre with a roundel of figures at leisure in a garden setting, further figures at leisure around the plate rim, the rim underside painted with flowers, central peony design within the footrim, (faint hairline at rim), *25.5cm diameter*

£500 - 700

For details of the charges payable in addition to the final Hammer Price of each Lot please refer to paragraphs 7 & 8 of the Notice to Bidders at the back of the catalogue.





178

176

**A PEACH BLOOM VASE**

Kangxi six character mark in underglaze blue  
The slender vase with spreading neck and mottled glaze, later enamelled with a single dragon amidst clouds, marked within the deep hollow foot rim,  
*16cm and displayed on a carved wood stand*

£400 - 600

177

**TWO SIMILAR BLANC-DE-CHINE LIBATION CUPS**

17th/18th century  
Each simulating a rhinoceros horn cups and applied with foliate sprigs, one decorated to one side with a spotted deer, the reverse with a dragon in the sky looking down on another, the other spotted deer looking up at a crane in flight above, the reverse with a lion dog pup looking up to a coiling dragon in the sky, (chips to rim),  
*one 5.8cm high and 10.3cm across, the other 5.3cm high and 10cm across*

£400 - 600

178

**A BLANC-DE-CHINE CENSER**

17th/18th century  
A compressed bombÉ form and with applied lion head handles, raised on a spreading foot rim, (two chips to rim),  
*6cm high and 13cm wide*

£400 - 600



181

179

**TWO BLANC-DE-CHINE LIBATION CUPS AND TWO OTHERS**

17th/18th century  
Two relief decorated with prunus, the branch work forming openwork feet, *largest 6.4cm high*, an example modelled as a rhinoceros horn with motifs of cranes in flight on a circular foot, *5cm high* and a small example with prunus decoration on an open foot, *4.5cm high*

£400 - 600

180

**A BLANC-DE-CHINE GUANDI AND TWO LION DOG JOSS STICK HOLDERS**

An 18th/19th century Guandi modelled seated with long beard in flowing robes, *19cm high*, the earlier 17th century joss stick holders, typically modelled as male and female dogs upon a rectangular plinth bases, (damages),  
*12.5cm high*

£300 - 500

181

**A LARGE BLANC-DE-CHINE LIBATION CUP**

17th/18th Century  
The cup simulating a rhinoceros libation cup, one side with applied sprigs of bixi and butterflies, the reverse with three lion dog pups below a coiling dragon in the sky,  
*7.6cm high and 14cm wide*

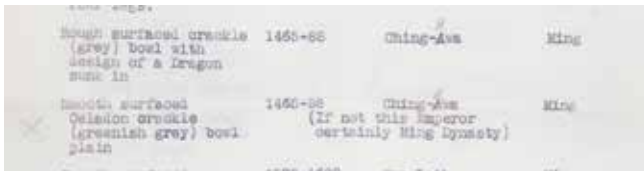
£500 - 700



176



182



Entry from Collectors' list



183

182

**A CELADON GLAZED BRUSH WASHER**

Ming

Of compressed ovoid form with gently incurving to a brown-burned mouth rim, the green-grey glaze displaying irregularly spaced crazing throughout, glazed within the wide footrim, *7.2cm high, 13.2cm diameter*

**£700 - 900**

From the collection of Alexander Sutherland, an official with Chinese Customs in Chefoo, China circa 1900 and by descent to the current owners.

The below extract from Edinburgh's George Watson's Boy's College World War I Record makes mention of Mr Alexander Sutherland when recording the military service of his son George Dunnett Sutherland who was admitted to George Watson's College in October 1905.

'Castletown, Caithness, 1889.; son of Mr A Sutherland, Tientsin, China; 1905-1907; Branch Secy. Oriental Government Security Life Insce. Coy., Rangoon, Burma. 6th R.H., 2/Lt.; France, Somme; invalided home unfit.'

183

**A CLARE-DE-LUNE PEAR-SHAPED VASE**

Yongzheng mark but later

*28.5cm high*

**£600 - 800**

**Provenance**

Offered by the family of the late James Benzies, an Aberdeen antiques dealer whose George Street premises ceased trading in 1987.

184

**A COLLECTION OF YIXING AND MONOCHROME CERAMICS**

A teapot of square section with zhuan-shu design characters on shaped panel to one side only, makers mark, *11cm high*, a miniature globular shaped teapot, makers mark, *6cm high*, a sang de boeuf bottle vase, *19cm high*, a turquoise glazed globular brush washer, *5cm high* together with a small guan-type double gourd brush washer, *4.8cm high*

**£250 - 350**

**Provenance**

Offered by the family of the late James Benzies, an Aberdeen antiques dealer whose George Street premises ceased trading in 1987.



186

For details of the charges payable in addition to the final Hammer Price of each Lot please refer to paragraphs 7 & 8 of the Notice to Bidders at the back of the catalogue.

185

**A TURQUOISE GLAZED BOWL**

Daoguang mark in zhuanhu script  
Of marquise shaped section, the exterior decorated in relief with key pattern scroll below a border of bamboo, (porcelain bearing extensive restoration), the pierced wood cover with lion dog finial and raised on an ornate hardwood stand,  
*bowl, 26.5cm wide, 9.3cm high*

**£800 - 1,200**

186

**A TEA-DUST BOTTLE VASE**

Bearing Qianlong seal mark  
The body of compressed globular form rising from a splayed foot to a tall cylindrical neck, with raised six-character seal mark, all covered with a flecked olive green tea-dust glaze,  
*26cm high*

**£1,000 - 1,500**

**Provenance**

Removed from Balnakeilly House, Pitlochry, Scotland.

Offered for sale by direct descendants of Augustus Raymond Margary. Margary Served in Her Majesty's Consular Service in China 1867-1875. He formed part of The Legation at Peking in 1870. His murder in the Southern Chinese Provenances, on his return journey in 1875 became famously known as 'The Margary Affair'. This led to major trade concessions from the Qing Government to Britain in The Chefoo Convention the following year. A memorial to Margary was erected in 1880 in Shanghai.

187

**A FAMILLE ROSE BOWL**

Guangxu six character mark and of the period  
The bowl interior decorated in underglaze blue and white with a stylised design of lotus bud and leaves amidst scrolling foliage, the exterior enamelled in colours with a similar repeat lotus design,  
*15cm diameter, 6.5cm high*

**£1,000 - 1,500**

188

**A WUCAI 'DRAGON AND PHOENIX' BOWL,**

Qianlong mark and period  
With deep rounded sides rising to a slightly everted rim, the exterior painted with two phoenix descending between green and iron-red dragons pursuing flaming pearls amidst flower sprigs, below a band of Buddhist emblems alternating with ruyi heads joined by a blue line, (glued chip at rim with associated hairline crack),  
*15cm diameter, 6.7cm high*

**£800 - 1,200**

189

**AN EXPORT PORCELAIN SAUCER DISH**

18th century  
Decorated with pink lotus flowers, leaves and further yellow and blue flowers,  
*27.5cm diameter*

**£300 - 500**

190

**A FAMILLE VERTE BOWL**

18th century  
Enamelled to the exterior with courtly figures paying homage to an emperor or warlord, the well with a stylised phoenix and clouds, (rim damages),  
*20cm diameter*

**£200 - 300**

191

**A FAMILLE ROSE SLEEVE VASE**

19th century  
The vessel tapering outwards slightly to a spreading neck, the body richly enamelled in an interesting palette including yellow ochre and aubergine with continuous scenery of vases and vessels, some upon tables or stands issuing flowers and branches, fruits and a selection of precious objects between underglaze blue bands and formal enamelled borders,  
*25.5cm high*

**£300 - 500**

192

**TWO BOTTLE VASES**

Early 20th century  
One with c-scroll handles interlinked with loose rings, decorated in blue and iron red with opposing lion dogs, one playing with brocade ball, on a white ground, the base rim with band of stylised waves, *32.5cm high*, the other with male dog looking down on female, in blue, green and pink enamels, on an ochre ground,  
*32cm high*

**£300 - 500**



187



188



190



193

193  
**A FAMILLE ROSE TRIPOD CENSER AND COVER AND A PAIR OF LION DOGS**

Circa 1900

The turquoise censer with dragon handles and on three pink mask and tongue supports, with applied foliate decoration, the pierced domed cover with lion dog finial, *21cm high*, the female lion dog with paw on cub, the male on brocade ball, both in green yellow and pink glazes, on brown plinth bases, *20.5cm high*

£300 - 500

**Provenance**

Offered by the family of the late James Benzies, an Aberdeen antiques dealer whose George Street premises ceased trading in 1987.

194

**A FAMILLE NOIR WINE EWER**

Kangxi style but 19th century

Modelled as a qilin standing four-square with his head raised high and a short curved spout issuing from its ferocious open jaws, the head framed by moulded circles, the body also moulded with bifurcated scrolls on a black ground, the tail hollowed and open at the tip, *19cm high*

£1,000 - 1,500

195

**A FAMILLE ROSE FLOOR VASE**

Mid 19th century

Of baluster form, the flaring neck with two rectangular opposing panels, each depicting Chinese immortals amidst clouds and applied with phoenix handles, the body with two opposing panels of various immortals at leisure in their heavenly retreat, within borders of entwined dragons and upon a turquoise ground profusely decorated with scrolling lotus, all between formal ruyi borders, (extensive old repairs), *80cm high*

£2,000 - 3,000



194

196

**A LARGE BOTTLE VASE**

19th century

Decorated all over with moulded Buddhistic lions, some playing with a brocade ball, amid stylised clouds and lightening symbols, on a rich yellow ground, between formal borders, *50cm high*

£600 - 800

197

**A PAIR OF MASSIVE CANTON EXPORT FAMILLE ROSE FLOOR VASES**

19th century

Of baluster form and enamelled with panels enclosing birds among blossoming tree branches, with Buddhist lion handles, *92cm high*

£3,000 - 5,000

198

**A FAMILLE ROSE BALUSTER VASE AND A STRAITS PORCELAIN TEAPOT**

The vase painted with two opposing panels of birds in flowering branches, on a ground of mille-fleurs, Qianlong seal mark in red but Republic, *24cm high*, together with a globular teapot with upright metallic swing handles and detachable cover, (cover damaged), the vessel painted with two opposing panels each featuring a phoenix and dragon, Qianlong reign mark in red but Republic, *porcelain 11.3cm high*

£300 - 400

199

**A FAMILLE ROSE JAR**

18th century

A baluster jar painted with a pair of birds perched on a flowering branch issuing from behind large peony spray, *12.4cm cm*

£250 - 350

For details of the charges payable in addition to the final Hammer Price of each Lot please refer to paragraphs 7 & 8 of the Notice to Bidders at the back of the catalogue.



197



195

200

**A FAMILLE ROSE TANKARD**

18th century

Enamelled with two ladies beside a table watching two boys teasing two small dogs within a leaf shaped cartouche, further floral sprays and below a spearhead border, chip to rim, 14.5cm high

£300 - 500

201

**A COLLECTION OF FAMILLE ROSE PORCELAIN**

18th and 19th centuries

Comprising; two shaped circular dishes with detailed enamelled design of courtly figures in procession, 21cm diameter, a single plate featuring crane amidst foliage, 23cm diameter, a cream jug and cover, enamelled with figures playing on a terrace, four various teabowls, a teacup and six various saucers including some decorated in Mandarin pattern

£250 - 350

202

**AN EXPORT BLUE AND WHITE TUREEN AND COVER**

18th century

Of shaped oval form with hare head handles and a scroll finial, decorated with alternate famille rose sprays and shield motifs enclosing the monogram FCC, within formal borders of peony, butterflies and cell patterned panels, 33.5cm across

£300 - 400



196



203

203

**A RARE FAMILLE ROSE FIGURE OF GUANDI**

By Nie Shengfa zao, Republic  
The seated God of War depicted enthroned with stern expression and teasing at his beard as he holds forth a scroll or declaration, impressed mark,  
*41cm high*

**£2,000 - 3,000**

**Provenance**

Offered by the family of the late James Benzies, an Aberdeen antiques dealer whose George Street premises ceased trading in 1987.

204

**A PAIR OF FAMILLE ROSE BALUSTER VASES**

19th century  
Each with panels of courtly figures within geometric borders, reserved on a celadon ground decorated with birds and flowering sprays, (damages),  
*46cm high*

**£150 - 200**

205

**A FAMILLE ROSE FIGURE OF SHOULAO**

Republic or later  
The figure of the immortal modelled holding his attributes of gnarled staff and peach,  
*25cm high*

**£200 - 300**

206

**TWO FAMILLE ROSE VASES**

Each with Qianlong marks but Republic  
The bottle vase enamelled with a single flowering tree peony, the reverse plain other than a single falling bloom, *19.2cm high*, the second of ovoid form and decorated with a pair of quail amidst rockwork and flowers, *17cm high*

**£600 - 800**

**Provenance**

Offered by the family of the late James Benzies, an Aberdeen antiques dealer whose George Street premises ceased trading in 1987.



206



207

207

**A PAIR OF FAMILLE ROSE BOWLS**

Daoguang marks but Republic  
Each decorated with immortal and attendant opposite poetic inscription,  
*17cm diameter*

**£2,000 - 3,000**

**Provenance**

Offered by the family of the late James Benzies, an Aberdeen antiques dealer whose George Street premises ceased trading in 1987.

208

**A QUANTITY OF FAMILLE ROSE AND BLUE AND WHITE CERAMICS**

18th and 19th century  
Comprising; a millefiori bowl densely decorated all over with varying flowers, *17.5cm diameter*, a famille rose tea caddy, *11.5cm high*, a famille rose and bianco sopra bianco tea bowl and saucer, a pair of Mandarin pattern saucers, a famille verte saucer, famille rose and underglaze blue saucer and similar tea cup, four blue and white saucers of various designs, five Canton famille rose side plates, two similar saucers and two similar cups

**£300 - 500**

**Provenance**

Offered by the family of the late James Benzies, an Aberdeen antiques dealer whose George Street premises ceased trading in 1987.

209

**AN ENAMELLED RECTANGULAR PORCELAIN PANEL**

After Deng Bishan 1874 - 1930  
Painted to each side with carp amidst lotus and reeds, each side with seal marks and script,  
*16.4cm x 25.1cm*

**£500 - 700**

210

**A POWDER BLUE VASE, ROULEAU**

Kangxi style but 19th century  
Decorated in gilt all over with a continuous scene of birds amidst prunus issuing from rockwork between formal borders,  
*38cm high*

**£400 - 600**

211

**A GROUP OF SEVEN FAMILLE ROSE BOWLS**

Jiaqing-Tongzhi seal marks, 19th century  
Including a gilt-ground famille rose spittoon, Daoguang seal mark and possibly of the period,  
*The largest, 18cm diameter (7).*

**£300 - 500**

212

**A FAMILLE ROSE JARDINIÈRE**

19th century  
Of hexagonal section with everted flattened rim, painted with peony and hibiscus sprays reserved on a black ground with green scrolls and raised on a pierced base,  
*24cm high and 40.5cm across*

**£500 - 700**

213

**AN UNUSUAL STEM VASE**

Kangxi style but 19th century  
Modelled as two boys holding aloft a large wicker basket upon the back of the elephant, in an egg and spinach glaze, signature to base, (repairs to neck)  
*24.5cm high*

**£300 - 400**



214



216

## FURNITURE

214

### A STAINED ELM SETTEE

Qing

The back with galleried top-rail over a long single panel carved and pierced with lotus flowers and scrolling foliage spaced by chilong dragons, arms similarly treated, the rattan seat above a railed gallery, all raised on rectangular section supports with moulded edges and ending in scroll carved feet, 87cm high, 171cm wide, 63cm deep

£400 - 600

215

### A TABLE SCREEN WITH EMBROIDERED SILK PANEL

19th century

The rectangular glazed panel depicting numerous mating pairs of birds including, pheasants, parakeets, cranes, ducks and others in a rocky landscape setting, all displayed in a galleried frame and on a carved and pierced stand raised upon a pair of lion dog feet, (losses to stand), 95cm high, 62.5cm wide, 23cm deep

£800 - 1,200

216

### A HUANGHUALI SQUARE LOW TABLE

19th century

The top with inset figured wood panel above an apron with scroll work leading to square section supports with moulded edges and on scroll feet, 38cm high, 73.5cm square

£2,000 - 2,500

217

### A HUANGHUALI NEST OF FOUR TABLES

Qing

The rectangular tops with inset panel above a carved and pierced scroll and bead apron, raised on indented circular section supports joined by hump-back stretchers and on bun feet, Largest 73cm high, 51cm wide, 37cm deep

£800 - 1,200

218

### A NEST OF FOUR HONGMU TEA TABLES

19th century

The rectangular tops within faux bamboo surrounds over a carved and pierced apron of fruiting vine on faux bamboo supports joined by hump-backed stretchers, largest 70cm high, 49.5cm wide, 36cm deep

£400 - 600

219

### A MOTHER-OF-PEARL INLAID LOW TABLE

20th century

The rectangular top inset wood panel inlaid with a pair of peacocks on branch work flanked by lotus pond and a bird in a peony, the surrounding frame with further inlaid details, above an apron with carved and pierced panels of birds in prunus and raised on mask and tongue squat cabriole supports ending in ball and claw feet, 40.5cm high, 130cm wide, 59cm deep

£300 - 500



215





217



221

220 \*  
**A PAIR OF HARDWOOD LOW  
 JARDINIÈRE STANDS**

The hexagonal tops with rouge marble inset panel, and beaded edge, above aprons carved and pierced with fruiting vines, the carved decoration continuing to the cabriole supports joined by stretcher and ending in rustic branch feet,  
*46cm high*

£300 - 500

221  
**A HUANGHUALI NEST OF FOUR TABLES**

Qing  
 The rectangular tops with inset recessed wood panel above a scroll and bead carved and pierced apron, raised on circular section indented supports joined by hump-backed stretchers,  
*73cm high, 53cm wide, 38cm deep*

£800 - 1,200

222  
**A BRONZE GONG ON A CARVED WOOD  
 STAND**

19th century  
 The ruyi shaped gong with circular apertures and to one side cast in relief with luohan beneath two phoenix in clouds, reverse with similar scene but beneath a single dragon in the sky, displayed on a later European stand,  
*gong 65cm high, 59cm wide, stand 97cm high, 75.5cm wide*

£500 - 700

223  
**AN INLAID HONGMU SIDE TABLE**

19th century  
 The rectangular top with inset grey veined marble panel within a frame inlaid with mother-of-pearl with flowering branches above an inlaid waist and carved and pierced apron of birds in branches, raised on mask and tongue supports joined by an undertier with inlaid apron and ending in ball and claw feet,  
*81cm high, 45cm square*

£400 - 600

224  
**AN INLAID HONGMU SIDE TABLE**

19th century  
 The rectangular top with inset rouge marble panel with a frame inlaid with scrolling branch work in mother-of-pearl above a pierced waist and apron carved and pierced with ruyi and fruits, raised on supports joined by an upper undertier and lower key pattern platform and ending in ball and claw feet,  
*75.5cm high, 64.5cm wide, 40cm deep*

£400 - 600

225  
**AN INLAID HONGMU TRAVEL VANITY  
 BOX AND A PAINTED TRUNK**

19th century  
 The vanity box with mother-of-pearl hinged cover opening to reveal the mirror plate below and various drawers and compartments opening outwards on side hinges, metal lock-pate, *20cm high, 24cm wide, 31cm deep*, the hide covered small travel trunk with hinged cover and all over painted designs of ladies in traditional robes on terraces,  
*26cm high, 56cm wide, 34cm deep*

£250 - 350



222



227

227  
**A HUANGHUALI LARGE KANG TABLE**

Qing  
The rectangular top inset with a single wood panel over a galleried apron to the long sides and paneled apron to the short sides, on corner rectangular section supports with scroll carved feet,  
*52cm high, 181.5cm wide, 58cm deep*

£800 - 1,200

228  
**A NANMU LARGE ALTAR TABLE**

Qing  
The rectangular top inset with a single wood panel over an apron carved and pierced with clouds and with dragon carved ends, raised on square form supports,  
*91cm high, 239 wide, 60cm high*

£4,000 - 5,000

229  
**A CABINET ON CUPBOARD BASE**

19th century  
The upper section with a pair of doors with relief carved panels of dragons, on a base section with a single drawer and a further pair of doors with dragon carved panels, side panels carved with birds in branches, the apron carved with fruiting vine within a key pattern border, raised on square section supports,  
*138cm high, 69.5cm wide, 32cm deep*

£300 - 400

230  
**A HONGMU LOW TABLE**

Qing  
The rectangular top with inset wood panel over a splayed apron with scroll carved details in relief raised on square section supports with scroll carved feet,  
*31cm high, 91cm wide, 54.5cm deep*

£500 - 800

231  
**A PEDESTAL CENTRE TABLE**

19th century  
The circular top with inset rouge marble panel within a gadrooned border and raised on a pedestal carved and pierced with a single dragon amidst clouds and raised on three mask and tongue supports,  
*74.5cm high, 57.5cm diameter*

£300 - 400

232  
**A HUNGHUALI SCROLL TABLE**

Qing  
The plain rectangular top on twin side supports each pierced with a quatrefoil aperture on scroll carved feet,  
*35.5cm high, 122cm wide, 25.5cm deep*

£1,500 - 2,000

233  
**A HONGMU JARDINIÈRE STAND**

19th century  
The circular top with inset rouge marble panel within a border of carved fruiting vine and beaded edge, the apron carved and pierced with fruiting vine on cabriole supports joined by a cross-stretcher ending in dragon fish feet,  
*93cm high*

£300 - 400

234  
**A CAMPHORWOOD LINED HUANGHUALI STORAGE CHEST**

19th century  
The rectangular top panel with carved bi discs within a stylised dragon surround, the front and sides with similarly carved panels, the reverse a plain key pattern panel, raised on dragon mask supports with ball and claw feet, engraved lock plate,  
*60cm high, 105cm wide, 55cm deep*

£3,000 - 4,000



226

226  
**A HARDWOOD DISPLAY CABINET**

19th century  
The top with a key pattern carved gallery above a central glazed door flanked by glazed panel sides, shelved interior, all raised on a separate base with relief carved detailing and raised on cabriole supports joined by an undertier,  
*190cm high, 100cm wide, 40cm deep*

£400 - 600

For details of the charges payable in addition to the final Hammer Price of each Lot please refer to paragraphs 7 & 8 of the Notice to Bidders at the back of the catalogue.



228

235

**A HONGMU JARDINIÈRE STAND**

19th century

The circular top with inset rouge marble panel within a border carved with precious objects and fruiting pomegranate, the straight sided waist above an apron carved with birds in prunus and raised on carved cabriole supports joined by a cross-stretcher, 87.5cm high

£300 - 400

236

**A PAIR OF HUANGHUALI CARVED SIDE CHAIRS**

19th century

The lyre shaped carved and pierced curving backrests depicting bat amidst prunus and above birds in branches issuing from an urn supported by dragon fish, the solid seats over an apron carved with birds in prunus, raised on cabriole mask and tongue supports joined by curving stretchers and on ball and claw feet, 99cm high, 50cm wide, 48cm deep

£3,000 - 4,000

237

**A SMALL LOW TABLE AND A JARDINIÈRE STAND**

19th century

The stand with shaped circular top with inset rouge marble panel within a beaded edge, the apron carved and pierced with fruiting vine raised on mask and tongue supports ending in ball and claw feet, 45cm high, 50cm diameter, the low table or stand with rectangular top over a carved and pierced scroll apron on square section supports with scroll carved feet, 27cm high, 77cm wide, 41cm deep

£200 - 300



231



236



239



240

238

**A HARDWOOD TABLE SCREEN, CONVERTED**

19th century

The mirror plate within the replacement mahogany frame with boxwood stringing, on a Chinese carved and pierced stand, 86cm high

£150 - 200

239

**A HUANGHUALI ALTAR TABLE**

19th century

The rectangular top with inset wood panel, the scroll ends with ruyi terminals and inset panels of scrolling foliage, the galleried apron with central carved cash symbol tied by scroll work, the indented rectangular section supports with fish belly open panels and ending in scroll feet, 83cm high, 116cm wide, 41cm deep

£2,000 - 2,500

240

**A HUANGHUALI ENVELOPE CARD TABLE**

Late Qing

The swivel top with four dragon carved fold over segments opening to reveal four counter cups and a baize play surface within a dragon carved border over a waist with drawers and dummy drawers above a splayed apron carved with fruiting vine continuing onto the cabriole supports ending in hoof feet, 78cm high, 59cm square

£2,000 - 2,500

241

**A MARBLE-TOPPED SIDE TABLE AND ANOTHER SIDE TABLE**

Qing

The rectangular top with inset rouge marble panel above an apron carved and pierced with fruiting vine on circular section supports joined by an undertier and ending in ball and claw feet, 81cm high, 41cm wide, 31cm deep, the all wood table with rectangular top above a scroll carved apron on square form supports with moulded edge ending in scroll carved feet, 80cm high, 41cm wide, 30.5cm deep

£200 - 300

242

**A PAIR OF HUANGHUALI ARMCHAIRS**

Qing

The rustic branch carved backs with panels of dragons amidst clouds, the solid seats above an apron of carved and pierced prunus on splayed supports joined by stretchers, 100cm high, 63cm wide, 47cm deep

£2,000 - 2,500

For details of the charges payable in addition to the final Hammer Price of each Lot please refer to paragraphs 7 & 8 of the Notice to Bidders at the back of the catalogue.



244



243

243

**A HUANGHUALI AND SPECIMEN WOOD TABLE-TOP CURIO CABINET**

Late Qing

The split level top above two open niches and small pair of cupboard doors, the carved and pierced door panels formed from zitan or similar, jichimu and boxwood flanked by jichimu backed pierced panels, above a further open galleried niche and long drawer, the opposing side with a larger pair of cupboard doors with carved archaic characters within a shaped surround carved with pairs of confronting phoenix above two short drawers, all drawers with a hardwood-set cusped finger holes, all above an integral base section with scroll carved moulded edges raised on bracket feet, *55cm x 66cm x 32cm*

£4,000 - 5,000

244

**AN IMPRESSIVE HUANGHUALI WALL TABLE**

Qing

The rectangular top with inset wood panel above a front apron and side corbels carved with scrolling archaic key pattern designs, each short end fitted with a drawer similarly carved, the reverse plain, raised on square section supports with moulded edges ending in scroll carved feet, *88.5cm high, 118cm wide, 52cm deep*

£4,000 - 5,000

245

**A COROMANDEL MINIATURE EIGHT-FOLD SCREEN**

Early 19th century

The screen open forming a single river landscape populated with a profusion of bird life around a central phoenix on and around flowering branches within formal borders of chilong dragons and symbols of longevity, all raised on bracket feet and fitted with good double-action hinges, *each panel 20cm x 74.4cm*

£400 - 600



242



245



246



247



250



251

246

**A CAMPHOR WOOD LINED HUANGHUALI TRAVEL TRUNK**

Qing

The rectangular top with inset wood panel carved in relief with three shou characters and flanked by side panels carved with bats, the front with three further shou characters, side panels with a single shou motif, the reverse panel carved with a pair of bats, all raised on mask and tongue supports ending in ball and claw feet, opening to reveal a camphor interior including a tray slide,  
61cm high, 110cm wide, 58cm deep

£1,000 - 1,500

247

**A CAMPHOR WOOD LINED BURLWOOD TRAVEL TRUNK**

Qing

The rectangular top with inset figured wood panel, front similarly treated, the side panels carved with single longevity symbol, opening to reveal a camphor wood interior including a tray slide,  
61cm high, 104cm wide, 56cm deep

£2,000 - 3,000

248

**A HUANGHUALI LOW TABLE**

Qing

The rectangular top with inset wood panel over a splayed apron with scroll carved details on cabriole supports ending in ball and claw feet,  
29cm high, 80cm wide, 44cm deep

£800 - 1,200



252

249

**A HUANGHUALI LOW TABLE**

Qing

The rectangular top with inset wood panel over a splayed apron with scroll carved details on cabriole supports ending in ball and claw feet, *27.5cm high, 76.5cm wide, 41cm deep*

**£600 - 800**

250

**A MOTHER-OF-PEARL INLAID DRUM STOOL**

Qing

The circular top inset with a white marble panel within foliate inlaid details, the rim with mother-of-pearl prunts simulating tension pegs on a drum, the apron inlaid with bats suspending shou characters, raised on four inlaid out-curving supports joined by interlaced strap-work and on a circular base section with bracket feet, *52cm high*

**£800 - 1,200**

251

**A HUANGHUALI OCCASIONAL TABLE**

Qing

The rectangular top with inset wood panel, the waist with relief carved details over an apron with inlaid and engraved boxwood scroll design, raised on square section supports with moulded edges joined by hump-backed stretchers, *69cm high, 68cm wide, 40.5cm deep*

**£800 - 1,200**

252

**A LARGE AND IMPRESSIVE HUANGHUALI ALTAR TABLE**

Qing

The rectangular top with inset panel over an apron carved in relief with vases issuing plants, incense burners, urns and other precious objects with stepped and moulded edges, raised on indented pairs of rectangular section supports joined by fish-belly open panels and on scroll feet, *105cm high, 208.5cm wide, 43.5cm deep*

**£6,000 - 8,000**



255

253

**A HUANGHUALI SIDE CABINET**

Qing

Of trapezoidal shape, the rectangular top with upturned scroll sides supported on side corbels, the frieze drawer and pair of cupboard doors with archaic style key pattern scroll designs over a similarly carved apron and raised on scroll feet,

*80.5cm high, 76.5cm wide, 38cm deep*

**£800 - 1,200**



253

254

**A HUANGHUALI LOW TABLE**

The rectangular top with inset panel over an apron with relief carved panels of chilong dragons, raised on square section supports with moulded edges ending in spade feet,

*46cm high, 122cm wide, 55.5cm deep*

**£800 - 1,200**

255

**A TIELIMU KANG TABLE**

Qing

The rectangular top with inset wood panel above an apron with carved and pierced scroll detailing upon fruiting vine corbels, raised on rectangular section supports joined by hump-backed stretchers,

*33cm high, 142cm wide, 35cm deep*

**£800 - 1,200**

256

**A HONGMU JARDINIÈRE STAND**

Qing

The circular top inset with rouge marble panel within a beaded edge, the waist with lotus carved panels and over a splayed apron carved and pierced with fruiting vine, raised on mask and tongue cabriole supports with further carved details and joined with a carved and pierced undertier and ending in rustic branch feet,

*85cm high*

**£300 - 500**



257

**AN EBONISED JARDINIÈRE STAND**

19th century

The circular top with raised edge over a key pattern apron, raised on elephant mask supports joined by undertier carved and pierced with lotus and ruyi details, pale wood simulating the elephant's tusks, 58cm high, inside diameter of raised edge to top 30cm

£150 - 200

258

**A HUANGHUALI LANTERN STAND**

Qing

The lamp plateau above triple carved and pierced corbel brackets on a rise and fall central column, the hump-backed top-rail over a small pair of dragon carved corbels and above lower carved and pierced panels of stylised dragons flanking a flaming pearl, the splayed carved and pierced apron raised on curving side supports with twin side brackets of coiling stylised dragons, 154cm high extended, 42cm wide, 30cm deep

£800 - 1,200

259

**A HUANGHUALI OCCASIONAL TABLE**

The hexagonal top veneered with figured wood panel over an apron carved and pierced with scroll design on corner corbels, the supports with moulded edges and joined by hump-backed stretchers, 66cm high, 55.5cm wide and deep

£800 - 1,200

260

**A PAIR OF HUANGHUALI STOOLS**

Qing

The rectangular tops above over an apron of carved and pierced scroll design, raised on rectangular section supports joined by stretchers and on plain feet, 47cm high, 40cm wide, 28cm deep

£500 - 800

261

**A HUANGHUALI CURIO STAND**

Qing

The top of rectangular section with upturned ends above a selection of asymmetrically placed open shelving, the uprights with pierced with a selection of apertures representing vase, gourd, leaf and other geometric shapes above a base section with carved and pierced scrollwork apron raised on bracket feet, 53.5cm high, 48.5cm wide, 11.5cm deep

£400 - 600

**END OF SALE**



261



260



259

## FINE JAPANESE ART

Thursday 11 May 2017  
New Bond Street, London

## A SELECTION OF FINE SATSUMA WARE FROM ENGLISH PRIVATE COLLECTIONS

Meiji era (1868-1912)  
Estimates ranging from  
£800-6,000

## ENQUIRIES

London  
+44 (0) 20 7468 8368  
suzannah.yip@bonhams.com

New York  
+1 (212) 461 6516  
jeff.olson@bonhams.com



# Bonhams

LONDON

[bonhams.com/japanese](http://bonhams.com/japanese)

## FINE ASIAN WORKS OF ART AND PAINTINGS

20 June 2017  
San Francisco

**Entries now invited**

### A THANGKA OF TSONGKHAPA Central Tibet, 19th century

Distemper with cloth; verso imbued  
with red handprints and lengthy  
Tibetan inscription.

*Image: 26 x 17 5/8 in. (66 x 45 cm);  
With silks: 53 x 29 in. (135 x 74 cm)*

**US\$10,000-15,000**

### ENQUIRIES

+1 415 503 3333  
dessa.goddard@bonhams.com



# Bonhams

bonhams.com

## IMAGES OF DEVOTION

October 2017  
Hong Kong

Entries now invited

### A MONUMENTAL BRASS ALLOY FIGURE OF CANDA VAJRAPANI TIBET, 13TH CENTURY

*1.04 m (3 ft. 4 in.) high*

Sold for HK\$49,260,000  
(US\$ 6,346,749)

### THE WORLD RECORD PRICE FOR A TIBETAN SCULPTURE AT AUCTION

### ENQUIRIES

Edward Wilkinson  
+852 2918 4321  
edward.wilkinson@bonhams.com

Mark Rasmussen  
+1 917 206 1688  
mark.rasmussen@bonhams.com

Doris Jin Huang 金夢  
+1 917 206 1620  
doris.jinhuang@bonhams.com



# Bonhams

HONG KONG

[bonhams.com](http://bonhams.com)

Prices shown include buyer's premium. Details can be found at [bonhams.com](http://bonhams.com)

# THE JONGEN-SCHLEIPER COLLECTION OF FINE THANGKAS

Thursday 11 May 2017  
New Bond Street, London

The remarkable collection of nearly fifty Tibetan and Mongolian thangka was formed mostly in the 1970s and much of it was published in 1978 by Armand Neven in *Etudes D'Art Lamaïque et de L'Himalaya*. The richly diverse collection includes a very rare thangka triptych of the Panchen Lamas of Tashilhunpo, dated 1835, as well as a rare massive thangka triptych of Kalacakra, dated 1780.

Estimates ranging from: £800 - 300,000

## LECTURE AND RECEPTION

Monday 8 May 2017, 6pm

## ENQUIRIES

+44 (0) 20 7468 8248  
[chinese@bonhams.com](mailto:chinese@bonhams.com)



# Bonhams

LONDON

## NOTICE TO BIDDERS

This notice is addressed by *Bonhams* to any person who may be interested in a *Lot*, including *Bidders* and potential *Bidders* (including any eventual *Buyer* of the *Lot*). For ease of reference we refer to such persons as "*Bidders*" or "*you*". Our List of Definitions and Glossary is incorporated into this *Notice to Bidders*. It is at Appendix 3 at the back of the *Catalogue*. Where words and phrases are used in this notice which are in the List of Definitions, they are printed in italics.

IMPORTANT: Additional information applicable to the *Sale* may be set out in the *Catalogue* for the *Sale*, in an insert in the *Catalogue* and/or in a notice displayed at the *Sale* venue and you should read them as well. Announcements affecting the *Sale* may also be given out orally before and during the *Sale* without prior written notice. You should be alert to the possibility of changes and ask in advance of bidding if there have been any.

### 1. OUR ROLE

In its role as *Auctioneer* of *Lots*, *Bonhams* acts solely for and in the interests of the *Seller*. *Bonhams'* job is to sell the *Lot* at the highest price obtainable at the *Sale* to a *Bidder*. *Bonhams* does not act for *Buyers* or *Bidders* in this role and does not give advice to *Buyers* or *Bidders*. When it or its staff make statements about a *Lot* or, if *Bonhams* provides a *Condition Report* on a *Lot* it is doing that on behalf of the *Seller* of the *Lot*. *Bidders* and *Buyers* who are themselves not expert in the *Lots* are strongly advised to seek and obtain independent advice on the *Lots* and their value before bidding for them. The *Seller* has authorised *Bonhams* to sell the *Lot* as its agent on its behalf and, save where we expressly make it clear to the contrary, *Bonhams* acts only as agent for the *Seller*. Any statement or representation we make in respect of a *Lot* is made on the *Seller's* behalf and, unless *Bonhams* sells a *Lot* as principal, not on our behalf and any *Contract for Sale* is between the *Buyer* and the *Seller* and not with us. If *Bonhams* sells a *Lot* as principal this will either be stated in the *Catalogue* or an announcement to that effect will be made by the *Auctioneer*, or it will be stated in a notice at the *Sale* or an insert in the *Catalogue*.

*Bonhams* does not owe or undertake or agree to any duty or responsibility to you in contract or tort (whether direct, collateral, express, implied or otherwise). If you successfully buy for a *Lot* and buy it, at that stage *Bonhams* does enter into an agreement with the *Buyer*. The terms of that contract are set out in our *Buyer's Agreement*, which you will find at Appendix 2 at the back of the *Catalogue*. This will govern *Bonhams'* relationship with the *Buyer*.

### 2. LOTS

Subject to the *Contractual Description* printed in bold letters in the *Entry* about the *Lot* in the *Catalogue* (see paragraph 3 below), *Lots* are sold to the *Buyer* on an "as is" basis, with all faults and imperfections. Illustrations and photographs contained in the *Catalogue* (other than photographs forming part of the *Contractual Description*) or elsewhere of any *Lots* are for identification purposes only. They may not reveal the true condition of the *Lot*. A photograph or illustration may not reflect an accurate reproduction of the colour(s) of the *Lot*. *Lots* are available for inspection prior to the *Sale* and it is for you to satisfy yourself as to each and every aspect of a *Lot*, including its authorship, attribution, condition, provenance, history, background, authenticity, style, period, age, suitability, quality, roadworthiness (if relevant), origin, value and estimated selling price (including the *Hammer Price*). It is your responsibility to examine any *Lot* in which you are interested. It should be remembered that the actual condition of a *Lot* may not be as good as that indicated by its outward appearance. In particular, parts may have been replaced or renewed and *Lots* may not be authentic or of satisfactory quality; the inside of a *Lot* may not be visible and may not be original or may be damaged, as for example where it is covered by upholstery or material. Given the age of many *Lots* they may have been damaged and/or repaired and you should not assume that a *Lot* is in good condition. Electronic or mechanical parts may not operate or may not comply with current statutory requirements. You should not assume that electrical items designed to operate on mains electricity will be suitable for connection to the mains electricity supply and you should obtain a report from a qualified electrician on their status before

doing so. Such items which are unsuitable for connection are sold as items of interest for display purposes only. If you yourself do not have expertise regarding a *Lot*, you should consult someone who does to advise you. We can assist in arranging facilities for you to carry out or have carried out more detailed inspections and tests. Please ask our staff for details.

Any person who damages a *Lot* will be held liable for the loss caused.

### 3. DESCRIPTIONS OF LOTS AND ESTIMATES

#### **Contractual Description of a Lot**

The *Catalogue* contains an *Entry* about each *Lot*. Each *Lot* is sold by its respective *Seller* to the *Buyer* of the *Lot* as corresponding only with that part of the *Entry* which is printed in bold letters and (except for the colour, which may be inaccurately reproduced) with any photograph of the *Lot* in the *Catalogue*. The remainder of the *Entry*, which is not printed in bold letters, represents *Bonhams'* opinion (given on behalf of the *Seller*) about the *Lot* only and is not part of the *Contractual Description* in accordance with which the *Lot* is sold by the *Seller*.

#### **Estimates**

In most cases, an *Estimate* is printed beside the *Entry*. *Estimates* are only an expression of *Bonhams'* opinion made on behalf of the *Seller* of the range where *Bonhams* thinks the *Hammer Price* for the *Lot* is likely to fall; it is not an *Estimate* of value. It does not take into account any VAT or *Buyer's Premium* payable or any other fees payable by the *Buyer*, which are detailed in paragraph 7 of the *Notice to Bidders*, below. *Lots* can in fact sell for *Hammer Prices* below and above the *Estimate*. Any *Estimate* should not be relied on as an indication of the actual selling price or value of a *Lot*. *Estimates* are in the currency of the *Sale*.

#### **Condition Reports**

In respect of most *Lots*, you may ask for a *Condition Report* on its physical condition from *Bonhams*. If you do so, this will be provided by *Bonhams* on behalf of the *Seller* free of charge. *Bonhams* is not entering into a contract with you in respect of the *Condition Report* and accordingly does not assume responsibility to you in respect of it. Nor does the *Seller* owe or agree to owe you as a *Bidder* any obligation or duty in respect of this free report about a *Lot*, which is available for your own inspection or for inspection by an expert instructed by you. However, any written *Description* of the physical condition of the *Lot* contained in a *Condition Report* will form part of the *Contractual Description* of the *Lot* under which it is sold to any *Buyer*.

#### **The Seller's responsibility to you**

The *Seller* does not make or agree to make any representation of fact or contractual promise, *Guarantee* or warranty and undertakes no obligation or duty, whether in contract or in tort (other than to the eventual *Buyer* as set out above), in respect of the accuracy or completeness of any statement or representation made by him or on his behalf, which is in any way descriptive of any *Lot* or as to the anticipated or likely selling price of any *Lot*. Other than as set out above, no statement or representation in any way descriptive of a *Lot* or any *Estimate* is incorporated into any *Contract for Sale* between a *Seller* and a *Buyer*.

#### **Bonhams' responsibility to you**

You have the opportunity of examining the *Lot* if you want to and the *Contract for Sale* for a *Lot* is with the *Seller* and not with *Bonhams*; *Bonhams* acts as the *Seller's* agent only (unless *Bonhams* sells the *Lot* as principal).

*Bonhams* undertakes no obligation to you to examine, investigate or carry out any tests, either in sufficient depth or at all, on each *Lot* to establish the accuracy or otherwise of any *Descriptions* or opinions given by *Bonhams*, or by any person on *Bonhams'* behalf, whether in the *Catalogue* or elsewhere.

You should not suppose that such examinations, investigations or tests have occurred.

*Bonhams* does not make or agree to make any representation of fact, and undertakes no obligation or duty (whether in contract or tort) in respect of the accuracy or completeness

of any statement or representation made by *Bonhams* or on *Bonhams'* behalf which is in any way descriptive of any *Lot* or as to the anticipated or likely selling price of any *Lot*. No statement or representation by *Bonhams* or on its behalf in any way descriptive of any *Lot* or any *Estimate* is incorporated into our *Buyer's Agreement*.

#### **Alterations**

*Descriptions* and *Estimates* may be amended at *Bonhams'* discretion from time to time by notice given orally or in writing before or during a *Sale*.

THE *LOT* IS AVAILABLE FOR INSPECTION AND YOU MUST FORM YOUR OWN OPINION IN RELATION TO IT. YOU ARE STRONGLY ADVISED TO EXAMINE ANY *LOT* OR HAVE IT EXAMINED ON YOUR BEHALF BEFORE THE *SALE*.

### 4. CONDUCT OF THE SALE

Our *Sales* are public auctions which persons may attend and you should take the opportunity to do so. We do reserve the right at our sole discretion to refuse admission to our premises or to any *Sale* without stating a reason. We have complete discretion as to whether the *Sale* proceeds, whether any *Lot* is included in the *Sale*, the manner in which the *Sale* is conducted and we may offer *Lots* for *Sale* in any order we choose notwithstanding the numbers given to *Lots* in the *Catalogue*. You should therefore check the date and starting time of the *Sale*, whether there have been any withdrawals or late entries. Remember that withdrawals and late entries may affect the time at which a *Lot* you are interested in is put up for *Sale*. We have complete discretion to refuse any bid, to nominate any bidding increment we consider appropriate, to divide any *Lot*, to combine two or more *Lots*, to withdraw any *Lot* from a *Sale* and, before the *Sale* has been closed, to put up any *Lot* for auction again. Auction speeds can exceed 100 *Lots* to the hour and bidding increments are generally about 10%. However these do vary from *Sale* to *Sale* and from *Auctioneer* to *Auctioneer*. Please check with the department organising the *Sale* for advice on this. Where a *Reserve* has been applied to a *Lot*, the *Auctioneer* may, in his absolute discretion, place bids (up to an amount not equalling or exceeding such *Reserve*) on behalf of the *Seller*. We are not responsible to you in respect of the presence or absence of any *Reserve* in respect of any *Lot*. If there is a *Reserve* it will normally be no higher than the lower figure for any *Estimate* in the *Catalogue*, assuming that the currency of the *Reserve* has not fluctuated adversely against the currency of the *Estimate*. The *Buyer* will be the *Bidder* who makes the highest bid acceptable to the *Auctioneer* for any *Lot* (subject to any applicable *Reserve*) to whom the *Lot* is knocked down by the *Auctioneer* at the fall of the *Auctioneer's* hammer. Any dispute as to the highest acceptable bid will be settled by the *Auctioneer* in his absolute discretion. All bids tendered will relate to the actual *Lot* number announced by the *Auctioneer*. An electronic currency converter may be used at the *Sale*. This equipment is provided as a general guide as to the equivalent amount in certain currencies of a given bid. We do not accept any responsibility for any errors which may occur in the use of the currency converter. We may use video cameras to record the *Sale* and may record telephone calls for reasons of security and to assist in solving any disputes which may arise in relation to bids made at the *Sale*. At some *Sales*, for example, jewellery *Sales*, we may use screens on which images of the *Lots* will be projected. This service is provided to assist viewing at the *Sale*. The image on the screen should be treated as an indication only of the current *Lot*. It should be noted that all bids tendered will relate to the actual *Lot* number announced by the *Auctioneer*. We do not accept any responsibility for any errors which may occur in the use of the screen.

### 5. BIDDING

We do not accept bids from any person who has not completed and delivered to us one of our *Bidding Forms*, either our *Bidder Registration Form*, *Absentee Bidding Form* or *Telephone Bidding Form*. You will be asked for proof of identity, residence and references, which, when asked for, you must supply if your bids are to be accepted by us. Please bring your passport, driving licence (or similar photographic proof of identity) and proof of address. We may request a deposit from you before allowing you to bid. We may refuse entry to a *Sale*

to any person even if that person has completed a *Bidding Form*.

### Bidding in person

You should come to our *Bidder* registration desk at the *Sale* venue and fill out a *Bidder* Registration Form on (or, if possible, before) the day of the *Sale*. The bidding number system is sometimes referred to as "paddle bidding". You will be issued with a large card (a "paddle") with a printed number on it. This will be attributed to you for the purposes of the *Sale*. Should you be a successful *Bidder* you will need to ensure that your number can be clearly seen by the *Auctioneer* and that it is your number which is identified as the *Buyer's*. You should not let anyone else use your paddle as all *Lots* will be invoiced to the name and address given on your *Bidder* Registration Form. Once an invoice is issued it will not be changed. If there is any doubt as to the *Hammer Price* of, or whether you are the successful *Bidder* of, a particular *Lot*, you must draw this to the attention of the *Auctioneer* before the next *Lot* is offered for *Sale*. At the end of the *Sale*, or when you have finished bidding please return your paddle to the *Bidder* registration desk.

### Bidding by telephone

If you wish to bid at the *Sale* by telephone, please complete a Telephone *Bidding Form*, which is available from our offices or in the *Catalogue*. Please then return it to the office responsible for the *Sale* at least 24 hours in advance of the *Sale*. It is your responsibility to check with our Bids Office that your bid has been received. Telephone calls will be recorded. The telephone bidding facility is a discretionary service and may not be available in relation to all *Lots*. We will not be responsible for bidding on your behalf if you are unavailable at the time of the *Sale* or if the telephone connection is interrupted during bidding. Please contact us for further details.

### Bidding by post or fax

Absentee *Bidding Forms* can be found in the back of this *Catalogue* and should be completed and sent to the office responsible for the *Sale*. It is in your interests to return your form as soon as possible, as if two or more *Bidders* submit identical bids for a *Lot*, the first bid received takes preference. In any event, all bids should be received at least 24 hours before the start of the *Sale*. Please check your Absentee *Bidding Form* carefully before returning it to us, fully completed and signed by you. It is your responsibility to check with our Bids Office that your bid has been received. This additional service is complimentary and is confidential. Such bids are made at your own risk and we cannot accept liability for our failure to receive and/or place any such bids. All bids made on your behalf will be made at the lowest level possible subject to *Reserves* and other bids made for the *Lot*. Where appropriate your bids will be rounded down to the nearest amount consistent with the *Auctioneer's* bidding increments. New *Bidders* must also provide proof of identity and address when submitting bids. Failure to do this will result in your bid not being placed.

### Bidding via the internet

Please visit our *Website* at <http://www.bonhams.com> for details of how to bid via the internet.

### Bidding through an agent

Bids will be accepted as placed on behalf of the person named as the principal on the *Bidding Form* although we may refuse to accept bids from an agent on behalf of a principal and will require written confirmation from the principal confirming the agent's authority to bid. Nevertheless, as the *Bidding Form* explains, any person placing a bid as agent on behalf of another (whether or not he has disclosed that fact or the identity of his principal) will be jointly and severally liable with the principal to the *Seller* and to *Bonhams* under any contract resulting from the acceptance of a bid. Subject to the above, please let us know if you are acting on behalf of another person when bidding for *Lots* at the *Sale*.

Equally, please let us know if you intend to nominate another person to bid on your behalf at the *Sale* unless this is to be carried out by us pursuant to a Telephone or Absentee *Bidding Form* that you have completed. If we do not approve the agency arrangements in writing before the *Sale*, we are entitled to assume that the person bidding at the *Sale* is bidding on his own behalf. Accordingly, the person bidding at the *Sale* will be the *Buyer* and will be liable to pay the *Hammer Price* and

*Buyer's Premium* and associated charges. If we approve the identity of your client in advance, we will be in a position to address the invoice to your principal rather than you. We will require proof of the agent's client's identity and residence in advance of any bids made by the agent on his behalf. Please refer to our *Conditions of Business* and contact our Customer Services Department for further details.

## 6. CONTRACTS BETWEEN THE BUYER AND SELLER AND THE BUYER AND BONHAMS

On the *Lot* being knocked down to the *Buyer*, a *Contract for Sale* of the *Lot* will be entered into between the *Seller* and the *Buyer* on the terms of the *Contract for Sale* set out in Appendix 1 at the back of the *Catalogue*. You will be liable to pay the *Purchase Price*, which is the *Hammer Price* plus any applicable *VAT*. At the same time, a separate contract is also entered into between us as *Auctioneers* and the *Buyer*. This is our *Buyer's Agreement*, the terms of which are set out in Appendix 2 at the back of the *Catalogue*. Please read the terms of the *Contract for Sale* and our *Buyer's Agreement* contained in the *Catalogue* in case you are the successful *Bidder*. We may change the terms of either or both of these agreements in advance of their being entered into, by setting out different terms in the *Catalogue* and/or by placing an insert in the *Catalogue* and/or by notices at the *Sale* venue and/or by oral announcements before and during the *Sale*. You should be alert to this possibility of changes and ask if there have been any.

## 7. BUYER'S PREMIUM AND OTHER CHARGES PAYABLE BY THE BUYER

Under the *Buyer's Agreement*, a premium (the *Buyer's Premium*) is payable to us by the *Buyer* in accordance with the terms of the *Buyer's Agreement* and at rates set out below, calculated by reference to the *Hammer Price* and payable in addition to it. For this *Sale* the following rates of *Buyer's Premium* will be payable by *Buyers* of *Lots*:

25% up to £50,000 of the *Hammer Price*  
20% from £50,001 to £1,000,000 of the *Hammer Price*  
12% from £1,000,001 of the *Hammer Price*

Storage and handling charges may also be payable by the *Buyer* as detailed on the specific *Sale* Information page at the front of the *catalogue*.

Payment by credit card, company debit cards and debit cards issued by a non-UK bank will be subject to a 2% surcharge on the total value of the invoice.

The *Buyer's Premium* and all other charges payable to us by the *Buyer* are subject to *VAT* at the prevailing rate, currently 20%.

*VAT* may also be payable on the *Hammer Price* of the *Lot*, where indicated by a symbol beside the *Lot* number. See paragraph 8 below for details.

On certain *Lots*, which will be marked "AR" in the *Catalogue* and which are sold for a *Hammer Price* of €1,000 or greater (converted into the currency of the *Sale* using the European Central Bank Reference rate prevailing on the date of the *Sale*), the *Additional Premium* will be payable to us by the *Buyer* to cover our *Expenses* relating to the payment of royalties under the Artists Resale Right Regulations 2006. The *Additional Premium* will be a percentage of the amount of the *Hammer Price* calculated in accordance with the table below, and shall not exceed €12,500 (converted into the currency of the *Sale* using the European Central Bank Reference rate prevailing on the date of the *Sale*).

<i>Hammer Price</i>	Percentage amount
From €0 to €50,000	4%
From €50,000.01 to €200,000	3%
From €200,000.01 to €350,000	1%
From €350,000.01 to €500,000	0.5%
Exceeding €500,000	0.25%

## 8. VAT

The prevailing rate of *VAT* at the time of going to press is 20%, but this is subject to government change and the rate payable will be the rate in force on the date of the *Sale*.

The following symbols, shown beside the *Lot* number, are used to denote that *VAT* is due on the *Hammer Price* and *Buyer's Premium*:

- † *VAT* at the prevailing rate on *Hammer Price* and *Buyer's Premium*
- Ω *VAT* on imported items at the prevailing rate on *Hammer Price* and *Buyer's Premium*
- \* *VAT* on imported items at a preferential rate of 5% on *Hammer Price* and the prevailing rate on *Buyer's Premium*
- G Gold bullion exempt from *VAT* on the *Hammer Price* and subject to *VAT* at the prevailing rate on the *Buyer's Premium*
- Zero rated for *VAT*, no *VAT* will be added to the *Hammer Price* or the *Buyer's Premium*
- α *Buyers* from within the EU: *VAT* is payable at the prevailing rate on just the *Buyer's Premium* (NOT the *Hammer Price*). *Buyers* from outside the EU: *VAT* is payable at the prevailing rate on both *Hammer Price* and *Buyer's Premium*. If a *Buyer*, having registered under a non-EU address, decides that the item is not to be exported from the EU, then he should advise *Bonhams* immediately.

In all other instances no *VAT* will be charged on the *Hammer Price*, but *VAT* at the prevailing rate will be added to *Buyer's Premium* which will be invoiced on a *VAT* inclusive basis.

## 9. PAYMENT

It is of critical importance that you ensure that you have readily available funds to pay the *Purchase Price* and the *Buyer's Premium* (plus *VAT* and any other charges and *Expenses* to us) in full before making a bid for the *Lot*. If you are a successful *Bidder*, payment will be due to us by 4.30 pm on the second working day after the *Sale* so that all sums are cleared by the eighth working day after the *Sale*. Unless agreed by us in advance payments made by anyone other than the registered *Buyer* will not be accepted. Payment will have to be by one of the following methods (all cheques should be made payable to *Bonhams* 1793 Limited). *Bonhams* reserves the right to vary the terms of payment at any time.

**Sterling personal cheque drawn on a UK branch of a bank or building society:** all cheques must be cleared before you can collect your purchases;

**Cash:** you may pay for *Lots* purchased by you at this *Sale* with notes, coins or travellers cheques in the currency in which the *Sale* is conducted (but not any other currency) provided that the total amount payable by you in respect of all *Lots* purchased by you at the *Sale* does not exceed £3,000, or the equivalent in the currency in which the *Sale* is conducted, at the time when payment is made. If the amount payable by you for *Lots* exceeds that sum, the balance must be paid otherwise than in coins, notes or travellers cheques;

**Bank transfer:** you may electronically transfer funds to our *Trust Account*. If you do so, please quote your paddle number and invoice number as the reference. Our *Trust Account* details are as follows:

Bank: National Westminster Bank Plc  
Address: PO Box 4RY  
250 Regent Street  
London W1A 4RY  
Account Name: Bonhams 1793 Limited Trust Account  
Account Number: 25563009  
Sort Code: 56-00-27  
IBAN Number: GB 33 NWBK 560027 25563009

If paying by bank transfer, the amount received after the deduction of any bank fees and/or conversion of the currency of payment to pounds sterling must not be less than the sterling amount payable, as set out on the invoice.

**Debit cards:** there is no additional charge for purchases made with personal debit cards, issued by a UK bank. Debit cards issued by an overseas bank, deferred and company debit cards and all credit cards will be subject to a 2% surcharge;

**Credit cards:** Visa and Mastercard only. Please note there is a 2% surcharge on the total invoice value when payments are made using credit cards. It may be advisable to notify your card provider of your intended purchase in advance to reduce delays caused by us having to seek authority when you come to pay. If you have any questions with regard to payment, please contact our Customer Services Department.

**China UnionPay (CUP) debit cards:** No surcharge for using CUP debit cards will apply on the first £100,000 invoiced to a Buyer in any Sale; a 2% surcharge will be made on the balance over £100,000.

## 10. COLLECTION AND STORAGE

The *Buyer* of a *Lot* will not be allowed to collect it until payment in full and in cleared funds has been made (unless we have made a special arrangement with the *Buyer*). For collection and removal of purchased *Lots*, please refer to *Sale Information* at the front of the *Catalogue*. Our offices are open 9.00am – 5pm Monday to Friday. Details relating to the collection of a *Lot*, the storage of a *Lot* and our *Storage Contractor* after the *Sale* are set out in the *Catalogue*.

## 11. SHIPPING

For information and estimates on domestic and international shipping as well as export licenses please contact Alban Shipping on +44 (0) 1582 493 099 enquiries@albanshipping.co.uk

## 12. EXPORT/TRADE RESTRICTIONS

It is your sole responsibility to comply with all export and import regulations relating to your purchases and also to obtain any relevant export and/or import licence(s). Export licences are issued by Arts Council England and application forms can be obtained from its Export Licensing Unit. The detailed provisions of the export licencing arrangements can be found on the ACE website <http://www.artscouncil.org.uk/what-we-do/supporting-museums-cultural-property/export-controls/export-licensing/> or by phoning ACE on +44 (0)20 7973 5188. The need for import licences varies from country to country and you should acquaint yourself with all relevant local requirements and provisions. The refusal of any import or export licence(s) or any delay in obtaining such licence(s) shall not permit the rescission of any *Sale* nor allow any delay in making full payment for the *Lot*. Generally, please contact our shipping department before the *Sale* if you require assistance in relation to export regulations.

## 13. CITES REGULATIONS

Please be aware that all *Lots* marked with the symbol Y are subject to CITES regulations when exporting these items outside the EU. These regulations may be found at <http://www.defra.gov.uk/ahvla-en/imports-exports/cites/> or may be requested from:

Animal Health and Veterinary Laboratories Agency (AHVLA)  
Wildlife Licencing  
Floor 1, Zone 17, Temple Quay House  
2 The Square, Temple Quay  
BRISTOL BS1 6EB  
Tel: +44 (0) 117 372 8774

## 14. THE SELLERS AND/OR BONHAMS' LIABILITY

Other than any liability of the *Seller* to the *Buyer* of a *Lot* under the *Contract for Sale*, neither we nor the *Seller* are liable (whether in negligence or otherwise) for any error or misdescription or omission in any *Description* of a *Lot* or any *Estimate* in respect of it, whether contained in the *Catalogue* or otherwise, whether given orally or in writing and whether given before or during the *Sale*. Neither we nor the *Seller* will be liable for any loss of *Business*, profits, revenue or income, or for loss of reputation, or for disruption to *Business* or wasted time on the part of management or staff, or for indirect losses or consequential damages of any kind, irrespective in any

case of the nature, volume or source of the loss or damage alleged to be suffered, and irrespective of whether the said loss or damage is caused by or claimed in respect of any negligence, other tort, breach of contract (if any) or statutory duty, restitutionary claim or otherwise. In any circumstances where we and/or the *Seller* are liable in relation to any *Lot* or any *Description* or *Estimate* made of any *Lot*, or the conduct of any *Sale* in relation to any *Lot*, whether in damages, for an indemnity or contribution, or for a restitutionary remedy or otherwise, our and/or the *Seller's* liability (combined, if both we and the *Seller* are liable) will be limited to payment of a sum which will not exceed by way of maximum the amount of the *Purchase Price* of the *Lot* irrespective in any case of the nature, volume or source of any loss or damage alleged to be suffered or sum claimed as due, and irrespective of whether the liability arises from any negligence, other tort, breach of contract (if any) or statutory duty or otherwise. Nothing set out above will be construed as excluding or restricting (whether directly or indirectly) our liability or excluding or restricting any person's rights or remedies in respect of (i) fraud, or (ii) death or personal injury caused by our negligence (or by the negligence of any person under our control or for whom we are legally responsible), or (iii) acts or omissions for which we are liable under the Occupiers Liability Act 1957, or (iv) any other liability to the extent the same may not be excluded or restricted as a matter of law or (v) our undertakings under paragraphs 9 (in relation to specialist *Stamp* or *Book Sales* only) and 10 of the *Buyer's Agreement*. The same applies in respect of the *Seller*, as if references to us in this paragraph were substituted with references to the *Seller*.

## 15. BOOKS

As stated above, all *Lots* are sold on an "as is" basis, subject to all faults, imperfections and errors of *Description* save as set out below. However, you will be entitled to reject a *Book* in the circumstances set out in paragraph 11 of the *Buyers Agreement*. Please note that *Lots* comprising printed *Books*, unframed maps and bound manuscripts are not liable to VAT on the *Buyer's Premium*.

## 16. CLOCKS AND WATCHES

All *Lots* are sold "as is", and the absence of any reference to the condition of a clock or watch does not imply that the *Lot* is in good condition and without defects, repairs or restorations. Most clocks and watches have been repaired in the course of their normal lifetime and may now incorporate parts not original to them. Furthermore, *Bonhams* makes no representation or warranty that any clock or watch is in working order. As clocks and watches often contain fine and complex mechanisms, *Bidders* should be aware that a general service, change of battery or further repair work, for which the *Buyer* is solely responsible, may be necessary. *Bidders* should be aware that the importation of watches such as Rolex, Frank Muller and Corum into the United States is highly restricted. These watches may not be shipped to the USA and can only be imported personally.

## 17. FIREARMS – PROOF, CONDITION AND CERTIFICATION

### Proof of Firearms

The term "proof exemption" indicates that a firearm has been examined at a Proof House, but not proved, as either (a) it was deemed of interest and not intended for use, or (b) ammunition was not available. In either case, the firearm must be regarded as unsafe to fire unless subsequently proved. Firearms proved for Black Powder should not be used with smokeless ammunition.

The term "Certificate of Unprovability" indicates that a firearm has been examined at a Proof House and is deemed both unsuitable for proof and use. Reproof is required before any such firearm is to be used.

### Guns Sold as Parts

Barrels of guns sold as parts will only be made available for sleeving and measurements once rendered unserviceable according to the Gun Barrel Proof Act of 1968 to 1978 and the Rules of Proof.

### Condition of Firearms

Comment in this *Catalogue* is restricted, in general, to

exceptional condition and to those defects that might affect the immediate safety of a firearm in normal use. An intending *Bidder* unable to make technical examinations and assessments is recommended to seek advice from a gunmaker or from a modern firearms specialist. All prospective *Bidders* are advised to consult the ° of bore and wall-thickness measurements posted in the saleroom and available from the department. *Bidders* should note that guns are stripped only where there is a strong indication of a mechanical malfunction. Stripping is not, otherwise, undertaken. Guns intended for use should be stripped and cleaned beforehand. Hammer guns should have their rebound mechanisms checked before use. The safety mechanisms of all guns must be tested before use. All measurements are approximate.

## Original Gun Specifications Derived from Gunmakers

The Sporting Gun Department endeavours to confirm a gun's original specification and date of manufacture with makers who hold their original records.

## Licensing Requirements Firearms Act 1968 as amended

*Bonhams* is constantly reviewing its procedures and would remind you that, in the case of firearms or shotguns subject to certification, to conform with current legislation, *Bonhams* is required to see, as appropriate, your original registered firearms dealer's certificate / shot gun certificate / firearm certificate / museum firearms licence / Section 5 authority or import licence (or details of any exemption from which you may benefit, for instance Crown servant status) for the firearm(s) you have purchased prior to taking full payment of the amount shown on your invoice. Should you not already be in possession of such an authority or exemption, you are required to initially pay a deposit of 95% of the total invoice with the balance of 5% payable on presentation of your valid certificate or licence showing your authority to hold the firearm(s) concerned.

Please be advised that if a successful *Bidder* is then unable to produce the correct paperwork, the *Lot(s)* will be reoffered by *Bonhams* in the next appropriate *Sale*, on standard terms for *Sellers*, and you will be responsible for any loss incurred by *Bonhams* on the original *Sale* to you.

In the case of RFD certificates and Section 5 authorities, we wish to keep an up-to-date copy on file. Please supply us with a Fax or photocopy. It would be helpful if you could send us an updated copy whenever your certificate or authority is renewed or changed.

*Lots* marked 'S1' and bearing red labels are Section 1 firearms and require a valid British Firearms certificate, RFD Licence or import licence.

*Lots* marked 'S2' and bearing blue labels are Section 2 firearms and require a valid British Shotgun certificate, RFD licence or import licence.

*Lots* marked 'S5' and bearing specially marked red labels are Section 5 prohibited firearms and require a valid Section 5 Authority or import licence.

*Lots* marked with a 'S58' and bearing yellow labels are for obsolete calibres and no licence is required unless ammunition is held.

Unmarked *Lots* require no licence.

Please do not hesitate to contact the Modern Sporting Gun Department should you have any queries.

## Taxidermy and Related Items

As a *Seller* of these articles, *Bonhams* undertakes to comply fully with Cites and DEFRA regulations. *Buyers* are advised to inform themselves of all such regulations and should expect the exportation of items to take some time to arrange.

## 18. FURNITURE

### Upholstered Furniture

Whilst we take every care in cataloguing furniture which has been upholstered we offer no *Guarantee* as to the originality of the wood covered by fabric or upholstery.



## 19. JEWELLERY

### Gemstones

Historically many gemstones have been subjected to a variety of treatments to enhance their appearance. Sapphires and rubies are routinely heat treated to improve their colour and clarity, similarly emeralds are frequently treated with oils or resin for the same purpose. Other treatments such as staining, irradiation or coating may have been used on other gemstones. These treatments may be permanent, whilst others may need special care or re-treatment over the years to retain their appearance. *Bidders* should be aware that *Estimates* assume that gemstones may have been subjected to such treatments. A number of laboratories issue certificates that give more detailed *Descriptions* of gemstones. However there may not be consensus between different laboratories on the degrees, or types of treatment for any particular gemstone. In the event that *Bonhams* has been given or has obtained certificates for any *Lot* in the *Sale* these certificates will be disclosed in the *Catalogue*. Although, as a matter of policy, *Bonhams* endeavours to provide certificates from recognised laboratories for certain gemstones, it is not feasible to obtain certificates for each *Lot*. In the event that no certificate is published in the *Catalogue*, *Bidders* should assume that the gemstones may have been treated. Neither *Bonhams* nor the *Seller* accepts any liability for contradictions or differing certificates obtained by *Buyers* on any *Lots* subsequent to the *Sale*.

### Estimated Weights

If a stone(s) weight appears within the body of the *Description* in capital letters, the stone(s) has been unmounted and weighed by *Bonhams*. If the weight of the stone(s) is stated to be approximate and does not appear in capital letters, the stone(s) has been assessed by us within its/their settings, and the stated weight is a statement of our opinion only. This information is given as a guide and *Bidders* should satisfy themselves with regard to this information as to its accuracy.

### Signatures

#### 1. A diamond brooch, by Kutichinsky

When the maker's name appears in the title, in *Bonhams'* opinion the piece is by that maker.

#### 2. A diamond brooch, signed Kutichinsky

Has a signature that, in *Bonhams'* opinion, is authentic but may contain gemstones that are not original, or the piece may have been altered.

#### 3. A diamond brooch, mounted by Kutichinsky

Has been created by the jeweller, in *Bonhams'* opinion, but using stones or designs supplied by the client.

## 20. PHOTOGRAPHS

### Explanation of Catalogue Terms

- "Bill Brandt": in our opinion a work by the artist.
- "Attributed to Bill Brandt": in our opinion probably a work by the artist, but less certainty to authorship is expressed than in the preceding category.
- "Signed and/or titled and/or dated and/or inscribed": in our opinion the signature and/or title and/or date and/or inscription are in the artist's hand.
- "Signed and/or titled and/or dated and/or inscribed in another hand": in our opinion the signature and/or title and/or date and/or inscription have been added by another hand.
- The date given is that of the image (negative). Where no further date is given, this indicates that the photographic print is vintage (the term "vintage" may also be included in the *Lot Description*). A vintage photograph is one which was made within approximately 5-10 years of the negative. Where a second, later date appears, this refers to the date of printing. Where the exact printing date is not known, but understood to be later, "printed later" will appear in the *Lot Description*.
- Unless otherwise specified, dimensions given are those of the piece of paper on which the image is printed, including any margins. Some photographs may appear in the *Catalogue* without margins illustrated.
- All photographs are sold unframed unless stated in the *Lot Description*.

## 21. PICTURES

### Explanation of Catalogue Terms

The following terms used in the *Catalogue* have the following meanings but are subject to the general provisions relating to *Descriptions* contained in the *Contract for Sale*:

- "Jacopo Bassano": in our opinion a work by the artist. When the artist's forename(s) is not known, a series of asterisks, followed by the surname of the artist, whether preceded by an initial or not, indicates that in our opinion the work is by the artist named;
- "Attributed to Jacopo Bassano": in our opinion probably a work by the artist but less certainty as to authorship is expressed than in the preceding category;
- "Studio/Workshop of Jacopo Bassano": in our opinion a work by an unknown hand in a studio of the artist which may or may not have been executed under the artist's direction;
- "Circle of Jacopo Bassano": in our opinion a work by a hand closely associated with a named artist but not necessarily his pupil;
- "Follower of Jacopo Bassano": in our opinion a work by a painter working in the artist's style, contemporary or nearly contemporary, but not necessarily his pupil;
- "Manner of Jacopo Bassano": in our opinion a work in the style of the artist and of a later date;
- "After Jacopo Bassano": in our opinion, a copy of a known work of the artist;
- "Signed and/or dated and/or inscribed": in our opinion the signature and/or date and/or inscription are from the hand of the artist;
- "Bears a signature and/or date and/or inscription": in our opinion the signature and/or date and/or inscription have been added by another hand.

## 22. PORCELAIN AND GLASS

### Damage and Restoration

For your guidance, in our *Catalogues* we detail, as far as practicable, recorded all significant defects, cracks and restoration. Such practicable *Descriptions* of damage cannot be definitive, and in providing *Condition Reports*, we cannot *Guarantee* that there are no other defects present which have not been mentioned. *Bidders* should satisfy themselves by inspection, as to the condition of each *Lot*. Please see the *Contract for Sale* printed in this *Catalogue*. Because of the difficulty in determining whether an item of glass has been repolished, in our *Catalogues* reference is only made to visible chips and cracks. No mention is made of repolishing, severe or otherwise.

## 23. VEHICLES

### The Veteran Car Club of Great Britain

#### Dating Plates and Certificates

When mention is made of a Veteran Car Club Dating Plate or Dating Certificate in this *Catalogue*, it should be borne in mind that the Veteran Car Club of Great Britain using the services of Veteran Car Company Ltd, does from time to time, review cars already dated and, in some instances, where fresh evidence becomes available, the review can result in an alteration of date. Whilst the Club and Veteran Car Company Ltd make every effort to ensure accuracy, the date shown on the Dating Plate or Dating Certificate cannot be guaranteed as correct and intending purchasers should make their own enquiries as to the date of the car.

## 24. WINE

*Lots* which are lying under Bond and those liable to VAT may not be available for immediate collection.

### Examining the wines

It is occasionally possible to provide a pre-*Sale* tasting for larger parcels (as defined below). This is generally limited to more recent and everyday drinking wines. Please contact the department for details.

OIt is not our policy to inspect every unopened case. In the case of wines older than 20 years the boxes will usually have been opened and levels and appearance noted in the *Catalogue* where necessary. You should make proper allowance for variations in ullage levels and conditions of corks, capsules and labels.

### Corks and Ullages

Ullage refers to the space between the base of the cork and the wine. Ullage levels for Bordeaux shaped bottles are only normally noted when below the neck and for Burgundy, Alsace, German and Cognac shaped bottles when greater than 4 centimetres (cm). Acceptable ullage levels increase with age; generally acceptable levels are as follows:

Under 15 years old – into neck or less than 4cm  
15 to 30 years old – top shoulder (ts) or up to 5cm  
Over 30 years old – high shoulder (hs) or up to 6cm

It should be noted that ullages may change between publication of the *Catalogue* and the *Sale* and that corks may fail as a result of transporting the wine. We will only accept responsibility for *Descriptions* of condition at the time of publication of the *Catalogue* and cannot accept responsibility for any loss resulting from failure of corks either before or after this point.

### Options to buy parcels

A parcel is a number of *Lots* of identical size of the same wine, bottle size and *Description*. The *Buyer* of any of these *Lots* has the option to accept some or all of the remaining *Lots* in the parcel at the same price, although such options will be at the *Auctioneer's* sole discretion. Absentee *Bidders* are, therefore, advised to bid on the first *Lot* in a parcel.

### Wines in Bond

Wines lying in Bond are marked Δ. All *Lots* sold under Bond, and which the *Buyer* wishes to remain under Bond, will be invoiced without VAT or Duty on the *Hammer Price*. If the *Buyer* wishes to take the *Lot* as Duty paid, UK Excise Duty and VAT will be added to the *Hammer Price* on the invoice.

*Buyers* must notify *Bonhams* at the time of the *sale* whether they wish to take their wines under Bond or Duty paid. If a *Lot* is taken under Bond, the *Buyer* will be responsible for all VAT, Duty, clearance and other charges that may be payable thereon.

*Buyers* outside the UK must be aware that any forwarding agent appointed to export their purchases must have a movement certificate for *Lots* to be released under Bond.

### Bottling Details and Case Terms

The following terms used in the *Catalogue* have the following meanings:

CB – Château bottled  
DB – Domaine bottled  
EstB – Estate bottled  
BB – Bordeaux bottled  
BE – Belgian bottled  
FB – French bottled  
GB – German bottled  
OB – Oporto bottled  
UK – United Kingdom bottled  
owc – original wooden case  
iwc – individual wooden case  
oc – original carton

## SYMBOLS

### THE FOLLOWING SYMBOLS ARE USED TO DENOTE

- Y Subject to CITES regulations when exporting these items outside the EU, see clause 13.
- TP Objects displayed with a TP will be located at the Cadogan Tate warehouse and will only be available for collection from this location.
- W Objects displayed with a w will be located in the Bonhams Warehouse and will only be available for collection from this location.
- Δ Wines lying in Bond.
- AR An *Additional Premium* will be payable to us by the *Buyer* to cover our *Expenses* relating to payment of royalties under the Artists Resale Right Regulations 2006. See clause 7 for details.
- The *Seller* has been guaranteed a minimum price for the *Lot*, either by *Bonhams* or a third party. This may take the form of an irrevocable bid by a third party, who may make a financial gain on a successful *Sale* or a financial loss if unsuccessful.
- ▲ *Bonhams* owns the *Lot* either wholly or partially or may otherwise have an economic interest.
- Ⓞ This lot contains or is made of ivory. The United States Government has banned the import of ivory into the USA.

•, †, \*, G, Ω, α see clause 8, VAT, for details.

### DATA PROTECTION – USE OF YOUR INFORMATION

Where we obtain any personal information about you, we shall only use it in accordance with the terms of our Privacy Policy (subject to any additional specific consent(s) you may have given at the time your information was disclosed). A copy of our Privacy Policy can be found on our *Website* [www.bonhams.com](http://www.bonhams.com) or requested by post from Customer Services Department, 101 New Bond Street, London, W1S 1SR or by email from [info@bonhams.com](mailto:info@bonhams.com)

### APPENDIX 1

#### CONTRACT FOR SALE

**IMPORTANT:** These terms may be changed in advance of the *Sale* of the *Lot* to you, by the setting out of different terms in the *Catalogue* for the *Sale* and/or by placing an insert in the *Catalogue* and/or by notices at the *Sale* venue and/or by oral announcements before and during the *Sale* at the *Sale* venue. You should be alert to this possibility of changes and ask in advance of bidding if there have been any.

Under this contract the *Seller's* liability in respect of the quality of the *Lot*, its fitness for any purpose and its conformity with any *Description* is limited. You are strongly advised to examine the *Lot* for yourself and/or obtain an independent examination of it before you buy it.

#### 1 THE CONTRACT

- 1.1 These terms govern the *Contract for Sale* of the *Lot* by the *Seller* to the *Buyer*.
- 1.2 The Definitions and Glossary contained in Appendix 3 in the *Catalogue* are incorporated into this *Contract for Sale* and a separate copy can also be provided by *Bonhams* on request. Where words and phrases are used which are in the List of Definitions, they are printed in italics.
- 1.3 The *Seller* sells the *Lot* as the principal to the *Contract for Sale*, such contract being made between the *Seller* and you through *Bonhams* which acts in the sole capacity as the *Seller's* agent and not as an additional principal. However, if the *Catalogue* states that *Bonhams* sells the *Lot* as principal, or such a statement is made by an announcement by the *Auctioneer*, or by a notice at the *Sale*, or an insert in the *Catalogue*, then *Bonhams* is the *Seller* for the purposes of this agreement.

- 1.4 The contract is made on the fall of the *Auctioneer's* hammer in respect of the *Lot* when it is knocked down to you.

#### 2 SELLER'S UNDERTAKINGS

- 2.1 The *Seller* undertakes to you that:
- 2.1.1 the *Seller* is the owner of the *Lot* or is duly authorised to sell the *Lot* by the owner;
- 2.1.2 save as disclosed in the *Entry* for the *Lot* in the *Catalogue*, the *Seller* sells the *Lot* with full title guarantee or, where the *Seller* is an executor, trustee, liquidator, receiver or administrator, with whatever right, title or interest he may have in the *Lot*;
- 2.1.3 except where the *Sale* is by an executor, trustee, liquidator, receiver or administrator the *Seller* is both legally entitled to sell the *Lot*, and legally capable of conferring on you quiet possession of the *Lot* and that the *Sale* conforms in every respect with the terms implied by the Sale of Goods Act 1979, Sections 12(1) and 12(2) (see the Definitions and Glossary);
- 2.1.4 the *Seller* has complied with all requirements, legal or otherwise, relating to any export or import of the *Lot*, and all duties and taxes in respect of the export or import of the *Lot* have (unless stated to the contrary in the *Catalogue* or announced by the *Auctioneer*) been paid and, so far as the *Seller* is aware, all third parties have complied with such requirements in the past;
- 2.1.5 subject to any alterations expressly identified as such made by announcement or notice at the *Sale* venue or by the *Notice to Bidders* or by an insert in the *Catalogue*, the *Lot* corresponds with the *Contractual Description* of the *Lot*, being that part of the *Entry* about the *Lot* in the *Catalogue* which is in bold letters and (except for colour) with any photograph of the *Lot* in the *Catalogue* and the contents of any *Condition Report* which has been provided to the *Buyer*.

#### 3 DESCRIPTIONS OF THE LOT

- 3.1 Paragraph 2.1.5 sets out what is the *Contractual Description* of the *Lot*. In particular, the *Lot* is not sold as corresponding with that part of the *Entry* in the *Catalogue* which is not printed in bold letters, which merely sets out (on the *Seller's* behalf) *Bonhams'* opinion about the *Lot* and which is not part of the *Contractual Description* upon which the *Lot* is sold. Any statement or representation other than that part of the *Entry* referred to in paragraph 2.1.5 (together with any express alteration to it as referred to in paragraph 2.1.5), including any *Description* or *Estimate*, whether made orally or in writing, including in the *Catalogue* or on *Bonhams' Website*, or by conduct, or otherwise, and whether by or on behalf of the *Seller* or *Bonhams* and whether made prior to or during the *Sale*, is not part of the *Contractual Description* upon which the *Lot* is sold.
- 3.2 Except as provided in paragraph 2.1.5, the *Seller* does not make or give and does not agree to make or give any contractual promise, undertaking, obligation, guarantee, warranty, or representation of fact, or undertake any duty of care, in relation to any *Description* of the *Lot* or any *Estimate* in relation to it, nor of the accuracy or completeness of any *Description* or *Estimate* which may have been made by or on behalf of the *Seller* including by *Bonhams*. No such *Description* or *Estimate* is incorporated into this *Contract for Sale*.

#### 4 FITNESS FOR PURPOSE AND SATISFACTORY QUALITY

- 4.1 The *Seller* does not make and does not agree to make any contractual promise, undertaking, obligation, guarantee, warranty, or representation of fact in relation to the satisfactory quality of the *Lot* or its fitness for any purpose.

- 4.2 The *Seller* will not be liable for any breach of any undertaking, whether implied by the Sale of Goods Act 1979 or otherwise, as to the satisfactory quality of the *Lot* or its fitness for any purpose.

#### 5 RISK, PROPERTY AND TITLE

- 5.1 Risk in the *Lot* passes to you when it is knocked down to you on the fall of the *Auctioneer's* hammer in respect of the *Lot*. The *Seller* will not be responsible thereafter for the *Lot* prior to you collecting it from *Bonhams* or the *Storage Contractor*, with whom you have separate contract(s) as *Buyer*. You will indemnify the *Seller* and keep the *Seller* fully indemnified from and against all claims, proceedings, costs, expenses and losses arising in respect of any injury, loss and damage caused to the *Lot* after the fall of the *Auctioneer's* hammer until you obtain full title to it.
- 5.2 Title to the *Lot* remains in and is retained by the *Seller* until the *Purchase Price* and all other sums payable by you to *Bonhams* in relation to the *Lot* have been paid in full to, and received in cleared funds by, *Bonhams*.

#### 6 PAYMENT

- 6.1 Your obligation to pay the *Purchase Price* arises when the *Lot* is knocked down to you on the fall of the *Auctioneer's* hammer in respect of the *Lot*.
- 6.2 Time will be of the essence in relation to payment of the *Purchase Price* and all other sums payable by you to *Bonhams*. Unless agreed in writing with you by *Bonhams* on the *Seller's* behalf (in which case you must comply with the terms of that agreement), all such sums must be paid to *Bonhams* by you in the currency in which the *Sale* was conducted by not later than 4.30pm on the second working day following the *Sale* and you must ensure that the funds are cleared by the seventh working day after the *Sale*. Payment must be made to *Bonhams* by one of the methods stated in the *Notice to Bidders* unless otherwise agreed with you in writing by *Bonhams*. If you do not pay any sums due in accordance with this paragraph, the *Seller* will have the rights set out in paragraph 8 below.

#### 7 COLLECTION OF THE LOT

- 7.1 Unless otherwise agreed in writing with you by *Bonhams*, the *Lot* will be released to you or to your order only when *Bonhams* has received cleared funds to the amount of the full *Purchase Price* and all other sums owed by you to the *Seller* and to *Bonhams*.
- 7.2 The *Seller* is entitled to withhold possession from you of any other *Lot* he has sold to you at the same or at any other *Sale* and whether currently in *Bonhams'* possession or not until payment in full and in cleared funds of the *Purchase Price* and all other sums due to the *Seller* and/or *Bonhams* in respect of the *Lot*.
- 7.3 You will collect and remove the *Lot* at your own expense from *Bonhams'* custody and/ or control or from the *Storage Contractor's* custody in accordance with *Bonhams'* instructions or requirements.
- 7.4 You will be wholly responsible for packing, handling and transport of the *Lot* on collection and for complying with all import or export regulations in connection with the *Lot*.
- 7.5 You will be wholly responsible for any removal, storage or other charges or *Expenses* incurred by the *Seller* if you do not remove the *Lot* in accordance with this paragraph 7 and will indemnify the *Seller* against all charges, costs, including any legal costs and fees, *Expenses* and losses suffered by the *Seller* by reason of your failure to remove the *Lot* including any charges due under any *Storage Contract*. All such sums due to the *Seller* will be payable on demand.

<b>8</b>	<b>FAILURE TO PAY FOR THE LOT</b>	<b>9</b>	<b>THE SELLER'S LIABILITY</b>		
8.1	If the <i>Purchase Price</i> for a <i>Lot</i> is not paid to <i>Bonhams</i> in full in accordance with the <i>Contract for Sale</i> the <i>Seller</i> will be entitled, with the prior written agreement of <i>Bonhams</i> but without further notice to you, to exercise one or more of the following rights (whether through <i>Bonhams</i> or otherwise):	9.1	The <i>Seller</i> will not be liable for any injury, loss or damage caused by the <i>Lot</i> after the fall of the <i>Auctioneer's</i> hammer in respect of the <i>Lot</i> .	10.3	If either party to the <i>Contract for Sale</i> is prevented from performing that party's respective obligations under the <i>Contract for Sale</i> by circumstances beyond its reasonable control or if performance of its obligations would by reason of such circumstances give rise to a significantly increased financial cost to it, that party will not, for so long as such circumstances prevail, be required to perform such obligations. This paragraph does not apply to the obligations imposed on you by paragraph 6.
8.1.1	to terminate immediately the <i>Contract for Sale</i> of the <i>Lot</i> for your breach of contract;	9.2	Subject to paragraph 9.3 below, except for breach of the express undertaking provided in paragraph 2.1.5, the <i>Seller</i> will not be liable for any breach of any term that the <i>Lot</i> will correspond with any <i>Description</i> applied to it by or on behalf of the <i>Seller</i> , whether implied by the Sale of Goods Act 1979 or otherwise.	10.4	Any notice or other communication to be given under the <i>Contract for Sale</i> must be in writing and may be delivered by hand or sent by first class post or air mail or fax transmission, if to the <i>Seller</i> , addressed c/o <i>Bonhams</i> at its address or fax number in the <i>Catalogue</i> (marked for the attention of the Company Secretary), and if to you to the address or fax number of the <i>Buyer</i> given in the <i>Bidding Form</i> (unless notice of any change of address is given in writing). It is the responsibility of the sender of the notice or communication to ensure that it is received in a legible form within any applicable time period.
8.1.2	to resell the <i>Lot</i> by auction, private treaty or any other means on giving seven days' written notice to you of the intention to resell;	9.3	Unless the <i>Seller</i> sells the <i>Lot</i> in the course of a <i>Business</i> and the <i>Buyer</i> buys it as a <i>Consumer</i> ,	10.5	If any term or any part of any term of the <i>Contract for Sale</i> is held to be unenforceable or invalid, such unenforceability or invalidity will not affect the enforceability and validity of the remaining terms or the remainder of the relevant term.
8.1.3	to retain possession of the <i>Lot</i> ;	9.3.1	the <i>Seller</i> will not be liable (whether in negligence, other tort, breach of contract or statutory duty or in restitution or under the Misrepresentation Act 1967, or in any other way) for any lack of conformity with, or inaccuracy, error, misdescription or omission in any <i>Description</i> of the <i>Lot</i> or any <i>Entry</i> or <i>Estimate</i> in relation to the <i>Lot</i> made by or on behalf of the <i>Seller</i> (whether made in writing, including in the <i>Catalogue</i> , or on the <i>Website</i> , or orally, or by conduct or otherwise) and whether made before or after this agreement or prior to or during the <i>Sale</i> ;	10.6	References in the <i>Contract for Sale</i> to <i>Bonhams</i> will, where appropriate, include reference to <i>Bonhams'</i> officers, employees and agents.
8.1.4	to remove and store the <i>Lot</i> at your expense;	9.3.2	the <i>Seller</i> will not be liable for any loss of <i>Business</i> , <i>Business</i> profits or revenue or income or for loss of reputation or for disruption to <i>Business</i> or wasted time on the part of the <i>Buyer</i> or of the <i>Buyer's</i> management or staff or, for any indirect losses or consequential damages of any kind, irrespective in any case of the nature, volume or source of the loss or damage alleged to be suffered, and irrespective of whether the said loss or damage is caused by or claimed in respect of any negligence, other tort, breach of contract, statutory duty, restitutionary claim or otherwise;	10.7	The headings used in the <i>Contract for Sale</i> are for convenience only and will not affect its interpretation.
8.1.5	to take legal proceedings against you for any sum due under the <i>Contract for Sale</i> and/or damages for breach of contract;	9.3.3	in any circumstances where the <i>Seller</i> is liable to you in respect of the <i>Lot</i> , or any act, omission, statement, or representation in respect of it, or this agreement or its performance, and whether in damages, for an indemnity or contribution or for a restitutionary remedy or in any way whatsoever, the <i>Seller's</i> liability will be limited to payment of a sum which will not exceed by way of maximum the amount of the <i>Purchase Price</i> of the <i>Lot</i> irrespective in any case of the nature, volume or source of any loss or damage alleged to be suffered or sum claimed as due, and irrespective of whether the liability arises from any negligence, other tort, breach of contract, statutory duty, bailee's duty, restitutionary claim or otherwise.	10.8	In the <i>Contract for Sale</i> "including" means "including, without limitation".
8.1.6	to be paid interest on any monies due (after as well as before judgement or order) at the annual rate of 5% per annum above the base rate of National Westminster Bank Plc from time to time to be calculated on a daily basis from the date upon which such monies become payable until the date of actual payment;	9.3.3	in any circumstances where the <i>Seller</i> is liable to you in respect of the <i>Lot</i> , or any act, omission, statement, or representation in respect of it, or this agreement or its performance, and whether in damages, for an indemnity or contribution or for a restitutionary remedy or in any way whatsoever, the <i>Seller's</i> liability will be limited to payment of a sum which will not exceed by way of maximum the amount of the <i>Purchase Price</i> of the <i>Lot</i> irrespective in any case of the nature, volume or source of any loss or damage alleged to be suffered or sum claimed as due, and irrespective of whether the liability arises from any negligence, other tort, breach of contract, statutory duty, bailee's duty, restitutionary claim or otherwise.	10.9	References to the singular will include reference to the plural (and vice versa) and reference to any one gender will include reference to the other genders.
8.1.7	to repossess the <i>Lot</i> (or any part thereof) which has not become your property, and for this purpose (unless the <i>Buyer</i> buys the <i>Lot</i> as a <i>Consumer</i> from the <i>Seller</i> selling in the course of a <i>Business</i> ) you hereby grant an irrevocable licence to the <i>Seller</i> by himself and to his servants or agents to enter upon all or any of your premises (with or without vehicles) during normal <i>Business</i> hours to take possession of the <i>Lot</i> or part thereof;	9.4	Nothing set out in paragraphs 9.1 to 9.3 above will be construed as excluding or restricting (whether directly or indirectly) any person's liability or excluding or restricting any person's rights or remedies in respect of (i) fraud, or (ii) death or personal injury caused by the <i>Seller's</i> negligence (or any person under the <i>Seller's</i> control or for whom the <i>Seller</i> is legally responsible), or (iii) acts or omissions for which the <i>Seller</i> is liable under the Occupiers Liability Act 1957, or (iv) any other liability to the extent the same may not be excluded or restricted as a matter of law.	10.10	Reference to a numbered paragraph is to a paragraph of the <i>Contract for Sale</i> .
8.1.8	to retain possession of any other property sold to you by the <i>Seller</i> at the <i>Sale</i> or any other auction or by private treaty until all sums due under the <i>Contract for Sale</i> shall have been paid in full in cleared funds;	9.4	Nothing set out in paragraphs 9.1 to 9.3 above will be construed as excluding or restricting (whether directly or indirectly) any person's liability or excluding or restricting any person's rights or remedies in respect of (i) fraud, or (ii) death or personal injury caused by the <i>Seller's</i> negligence (or any person under the <i>Seller's</i> control or for whom the <i>Seller</i> is legally responsible), or (iii) acts or omissions for which the <i>Seller</i> is liable under the Occupiers Liability Act 1957, or (iv) any other liability to the extent the same may not be excluded or restricted as a matter of law.	10.11	Save as expressly provided in paragraph 10.12 nothing in the <i>Contract for Sale</i> confers (or purports to confer) on any person who is not a party to the <i>Contract for Sale</i> any benefit conferred by, or the right to enforce any term of, the <i>Contract for Sale</i> .
8.1.9	to retain possession of, and on seven days written notice to sell, <i>Without Reserve</i> , any of your other property in the possession of the <i>Seller</i> and/or of <i>Bonhams</i> (as bailee for the <i>Seller</i> ) for any purpose (including, without limitation, other goods sold to you) and to apply any monies due to you as a result of such <i>Sale</i> in satisfaction or part satisfaction of any amounts owed to the <i>Seller</i> or to <i>Bonhams</i> ; and	9.4	Nothing set out in paragraphs 9.1 to 9.3 above will be construed as excluding or restricting (whether directly or indirectly) any person's liability or excluding or restricting any person's rights or remedies in respect of (i) fraud, or (ii) death or personal injury caused by the <i>Seller's</i> negligence (or any person under the <i>Seller's</i> control or for whom the <i>Seller</i> is legally responsible), or (iii) acts or omissions for which the <i>Seller</i> is liable under the Occupiers Liability Act 1957, or (iv) any other liability to the extent the same may not be excluded or restricted as a matter of law.	10.12	Where the <i>Contract for Sale</i> confers an immunity from, and/or an exclusion or restriction of, the responsibility and/or liability of the <i>Seller</i> , it will also operate in favour and for the benefit of <i>Bonhams</i> , <i>Bonhams'</i> holding company and the subsidiaries of such holding company and the successors and assigns of <i>Bonhams</i> and of such companies and of any officer, employee and agent of <i>Bonhams</i> and such companies, each of whom will be entitled to rely on the relevant immunity and/or exclusion and/or restriction within and for the purposes of Contracts (Rights of Third Parties) Act 1999, which enables the benefit of a contract to be extended to a person who is not a party to the contract, and generally at law.
8.1.10	so long as such goods remain in the possession of the <i>Seller</i> or <i>Bonhams</i> as its bailee, to rescind the contract for the <i>Sale</i> of any other goods sold to you by the <i>Seller</i> at the <i>Sale</i> or at any other auction or by private treaty and apply any monies received from you in respect of such goods in part or full satisfaction of any amounts owed to the <i>Seller</i> or to <i>Bonhams</i> by you.	9.4	Nothing set out in paragraphs 9.1 to 9.3 above will be construed as excluding or restricting (whether directly or indirectly) any person's liability or excluding or restricting any person's rights or remedies in respect of (i) fraud, or (ii) death or personal injury caused by the <i>Seller's</i> negligence (or any person under the <i>Seller's</i> control or for whom the <i>Seller</i> is legally responsible), or (iii) acts or omissions for which the <i>Seller</i> is liable under the Occupiers Liability Act 1957, or (iv) any other liability to the extent the same may not be excluded or restricted as a matter of law.	11	<b>GOVERNING LAW</b>
8.2	You agree to indemnify the <i>Seller</i> against all legal and other costs of enforcement, all losses and other <i>Expenses</i> and costs (including any monies payable to <i>Bonhams</i> in order to obtain the release of the <i>Lot</i> ) incurred by the <i>Seller</i> (whether or not court proceedings will have been issued) as a result of <i>Bonhams</i> taking steps under this paragraph 8 on a full indemnity basis together with interest thereon (after as well as before judgement or order) at the rate specified in paragraph 8.1.6 from the date upon which the <i>Seller</i> becomes liable to pay the same until payment by you.	<b>10</b>	<b>MISCELLANEOUS</b>		All transactions to which the <i>Contract for Sale</i> applies and all connected matters will be governed by and construed in accordance with the laws of that part of the United Kingdom where the <i>Sale</i> takes place and the <i>Seller</i> and you each submit to the exclusive jurisdiction of the courts of that part of the United Kingdom, save that the <i>Seller</i> may bring proceedings against you in any other court of competent jurisdiction to the extent permitted by the laws of the relevant jurisdiction. <i>Bonhams</i> has a complaints procedure in place.
8.3	On any resale of the <i>Lot</i> under paragraph 8.1.2, the <i>Seller</i> will account to you in respect of any balance remaining from any monies received by him or on his behalf in respect of the <i>Lot</i> , after the payment of all sums due to the <i>Seller</i> and to <i>Bonhams</i> , within 28 days of receipt of such monies by him or on his behalf.	10.1	You may not assign either the benefit or burden of the <i>Contract for Sale</i> .		
		10.2	The <i>Seller's</i> failure or delay in enforcing or exercising any power or right under the <i>Contract for Sale</i> will not operate or be deemed to operate as a waiver of his rights under it except to the extent of any express waiver given to you in writing. Any such waiver will not affect the <i>Seller's</i> ability subsequently to enforce any right arising under the <i>Contract for Sale</i> .		

## APPENDIX 2

### BUYER'S AGREEMENT

**IMPORTANT:** These terms may be changed in advance of the *Sale* of the *Lot* to you, by the setting out of different terms in the *Catalogue* for the *Sale* and/or by placing an insert in the *Catalogue* and/or by notices at the *Sale* venue and/or by oral announcements before and during the *Sale* at the *Sale* venue. You should be alert to this possibility of changes and ask in advance of bidding if there have been any.

#### 1 THE CONTRACT

- 1.1 These terms govern the contract between *Bonhams* personally and the *Buyer*, being the person to whom a *Lot* has been knocked down by the *Auctioneer*.
- 1.2 The Definitions and Glossary contained in Appendix 3 to the *Catalogue* for the *Sale* are incorporated into this agreement and a separate copy can also be provided by us on request. Where words and phrases which are defined in the List of Definitions are used in this agreement, they are printed in italics. Reference is made in this agreement to information printed in the *Notice to Bidders*, printed in the *Catalogue* for the *Sale*, and where such information is referred to it is incorporated into this agreement.
- 1.3 Except as specified in paragraph 4 of the *Notice to Bidders* the *Contract for Sale* of the *Lot* between you and the *Seller* is made on the fall of the *Auctioneer's* hammer in respect of the *Lot*, when it is knocked down to you. At that moment a separate contract is also made between you and *Bonhams* on the terms in this *Buyer's Agreement*.
- 1.4 We act as agents for the *Seller* and are not answerable or personally responsible to you for any breach of contract or other default by the *Seller*, unless *Bonhams* sells the *Lot* as principal.
- 1.5 Our personal obligations to you are governed by this agreement and we agree, subject to the terms below, to the following obligations:
- 1.5.1 we will, until the date and time specified in the *Notice to Bidders* or otherwise notified to you, store the *Lot* in accordance with paragraph 5;
- 1.5.2 subject to any power of the *Seller* or us to refuse to release the *Lot* to you, we will release the *Lot* to you in accordance with paragraph 4 once you have paid to us, in cleared funds, everything due to us and the *Seller*;
- 1.5.3 we will provide guarantees in the terms set out in paragraphs 9 and 10.
- 1.6 We do not make or give and do not agree to make or give any contractual promise, undertaking, obligation, *Guarantee*, warranty, representation of fact in relation to any *Description* of the *Lot* or any *Estimate* in relation to it, nor of the accuracy or completeness of any *Description* or *Estimate* which may have been made by us or on our behalf or by or on behalf of the *Seller* (whether made orally or in writing, including in the *Catalogue* or on *Bonhams' Website*, or by conduct, or otherwise), and whether made before or after this agreement or prior to or during the *Sale*. No such *Description* or *Estimate* is incorporated into this agreement between you and us. Any such *Description* or *Estimate*, if made by us or on our behalf, was (unless *Bonhams* itself sells the *Lot* as principal) made as agent on behalf of the *Seller*.

#### 2 PERFORMANCE OF THE CONTRACT FOR SALE

You undertake to us personally that you will observe and comply with all your obligations and undertakings to the *Seller* under the *Contract for Sale* in respect of the *Lot*.

#### 3 PAYMENT

- 3.1 Unless agreed in writing between you and us or as otherwise set out in the *Notice to Bidders*, you must pay to us by not later than 4.30pm on the second working day following the *Sale*:
- 3.1.1 the *Purchase Price* for the *Lot*;
- 3.1.2 a *Buyer's Premium* in accordance with the rates set out in the *Notice to Bidders* on each lot, and
- 3.1.3 if the *Lot* is marked [AP], an *Additional Premium* which is calculated and payable in accordance with the *Notice to Bidders* together with *VAT* on that sum if applicable so that all sums due to us are cleared funds by the seventh working day after the *Sale*.
- 3.2 You must also pay us on demand any *Expenses* payable pursuant to this agreement.
- 3.3 All payments to us must be made in the currency in which the *Sale* was conducted, using, unless otherwise agreed by us in writing, one of the methods of payment set out in the *Notice to Bidders*. Our invoices will only be addressed to the registered *Bidder* unless the *Bidder* is acting as an agent for a named principal and we have approved that arrangement, in which case we will address the invoice to the principal.
- 3.4 Unless otherwise stated in this agreement all sums payable to us will be subject to *VAT* at the appropriate rate and *VAT* will be payable by you on all such sums.
- 3.5 We may deduct and retain for our own benefit from the monies paid by you to us the *Buyer's Premium*, the *Commission* payable by the *Seller* in respect of the *Lot*, any *Expenses* and *VAT* and any interest earned and/or incurred until payment to the *Seller*.
- 3.6 Time will be of the essence in relation to any payment payable to us. If you do not pay the *Purchase Price*, or any other sum due to us in accordance with this paragraph 3, we will have the rights set out in paragraph 7 below.
- 3.7 Where a number of *Lots* have been knocked down to you, any monies we receive from you will be applied firstly pro-rata to pay the *Purchase Price* of each *Lot* and secondly pro-rata to pay all amounts due to *Bonhams*.

#### 4 COLLECTION OF THE LOT

- 4.1 Subject to any power of the *Seller* or us to refuse to release the *Lot* to you, once you have paid to us, in cleared funds, everything due to the *Seller* and to us, we will release the *Lot* to you or as you may direct us in writing. The *Lot* will only be released on production of a buyer collection document, obtained from our cashier's office.
- 4.2 You must collect and remove the *Lot* at your own expense by the date and time specified in the *Notice to Bidders*, or if no date is specified, by 4.30pm on the seventh day after the *Sale*.
- 4.3 For the period referred to in paragraph 4.2, the *Lot* can be collected from the address referred to in the *Notice to Bidders* for collection on the days and times specified in the *Notice to Bidders*. Thereafter, the *Lot* may be removed elsewhere for storage and you must enquire from us as to when and where you can collect it, although this information will usually be set out in the *Notice to Bidders*.

- 4.4 If you have not collected the *Lot* by the date specified in the *Notice to Bidders*, you authorise us, acting as your agent and on your behalf, to enter into a contract (the "*Storage Contract*") with the *Storage Contractor* for the storage of the *Lot* on the then current standard terms and conditions agreed between *Bonhams* and the *Storage Contractor* (copies of which are available on request). If the *Lot* is stored at our premises storage fees at our current daily rates (currently a minimum of £3 plus *VAT* per *Lot* per day) will be payable from the expiry of the period referred to in paragraph 4.2. These storage fees form part of our *Expenses*.
- 4.5 Until you have paid the *Purchase Price* and any *Expenses* in full the *Lot* will either be held by us as agent on behalf of the *Seller* or held by the *Storage Contractor* as agent on behalf of the *Seller* and ourselves on the terms contained in the *Storage Contract*.
- 4.6 You undertake to comply with the terms of any *Storage Contract* and in particular to pay the charges (and all costs of moving the *Lot* into storage) due under any *Storage Contract*. You acknowledge and agree that you will not be able to collect the *Lot* from the *Storage Contractor's* premises until you have paid the *Purchase Price*, any *Expenses* and all charges due under the *Storage Contract*.
- 4.7 You will be wholly responsible for packing, handling and transport of the *Lot* on collection and for complying with all import or export regulations in connection with the *Lot*.
- 4.8 You will be wholly responsible for any removal, storage, or other charges for any *Lot* not removed in accordance with paragraph 4.2, payable at our current rates, and any *Expenses* we incur (including any charges due under the *Storage Contract*), all of which must be paid by you on demand and in any event before any collection of the *Lot* by you or on your behalf.

#### 5 STORING THE LOT

We agree to store the *Lot* until the earlier of your removal of the *Lot* or until the time and date set out in the *Notice to Bidders*, on the *Sale Information Page* or at the back of the catalogue (or if no date is specified, by 4.30pm on the seventh day after the *Sale*) and, subject to paragraphs 6 and 10, to be responsible as *bailee* to you for damage to or the loss or destruction of the *Lot* (notwithstanding that it is not your property before payment of the *Purchase Price*). If you do not collect the *Lot* before the time and date set out in the *Notice to Bidders* (or if no date is specified, by 4.30pm on the seventh day after the *Sale*) we may remove the *Lot* to another location, the details of which will usually be set out in the relevant section of the *Catalogue*. If you have not paid for the *Lot* in accordance with paragraph 3, and the *Lot* is moved to any third party's premises, the *Lot* will be held by such third party strictly to *Bonhams' order* and we will retain our lien over the *Lot* until we have been paid in full in accordance with paragraph 3.

#### 6 RESPONSIBILITY FOR THE LOT

- 6.1 Only on the payment of the *Purchase Price* to us will title in the *Lot* pass to you. However under the *Contract for Sale*, the risk in the *Lot* passed to you when it was knocked down to you.
- 6.2 You are advised to obtain insurance in respect of the *Lot* as soon as possible after the *Sale*.

<b>7</b>	<b>FAILURE TO PAY OR TO REMOVE THE LOT AND PART PAYMENTS</b>	7.3	If you pay us only part of the sums due to us such payment shall be applied firstly to the <i>Purchase Price</i> of the <i>Lot</i> (or where you have purchased more than one <i>Lot</i> pro-rata towards the <i>Purchase Price</i> of each <i>Lot</i> ) and secondly to the <i>Buyer's Premium</i> (or where you have purchased more than one <i>Lot</i> pro-rata to the <i>Buyer's Premium</i> on each <i>Lot</i> ) and thirdly to any other sums due to us.	9.3	Paragraph 9 will not apply in respect of a <i>Forgery</i> if:
7.1	If all sums payable to us are not so paid in full at the time they are due and/or the <i>Lot</i> is not removed in accordance with this agreement, we will without further notice to you be entitled to exercise one or more of the following rights (without prejudice to any rights we may exercise on behalf of the <i>Seller</i> ):			9.3.1	the <i>Entry</i> in relation to the <i>Lot</i> contained in the <i>Catalogue</i> reflected the then accepted general opinion of scholars and experts or fairly indicated that there was a conflict of such opinion or reflected the then current opinion of an expert acknowledged to be a leading expert in the relevant field; or
7.1.1	to terminate this agreement immediately for your breach of contract;	7.4	We will account to you in respect of any balance we hold remaining from any monies received by us in respect of any <i>Sale</i> of the <i>Lot</i> under our rights under this paragraph 7 after the payment of all sums due to us and/or the <i>Seller</i> within 28 days of receipt by us of all such sums paid to us.	9.3.2	it can be established that the <i>Lot</i> is a <i>Forgery</i> only by means of a process not generally accepted for use until after the date on which the <i>Catalogue</i> was published or by means of a process which it was unreasonable in all the circumstances for us to have employed.
7.1.2	to retain possession of the <i>Lot</i> ;				
7.1.3	to remove, and/or store the <i>Lot</i> at your expense;				
7.1.4	to take legal proceedings against you for payment of any sums payable to us by you (including the <i>Purchase Price</i> ) and/or damages for breach of contract;	<b>8</b>	<b>CLAIMS BY OTHER PERSONS IN RESPECT OF THE LOT</b>	9.4	You authorise us to carry out such processes and tests on the <i>Lot</i> as we in our absolute discretion consider necessary to satisfy ourselves that the <i>Lot</i> is or is not a <i>Forgery</i> .
7.1.5	to be paid interest on any monies due to us (after as well as before judgement or order) at the annual rate of 5% per annum above the base lending rate of National Westminster Bank Plc from time to time to be calculated on a daily basis from the date upon which such monies become payable until the date of actual payment;	8.1	Whenever it becomes apparent to us that the <i>Lot</i> is the subject of a claim by someone other than you and other than the <i>Seller</i> (or that such a claim can reasonably be expected to be made), we may, at our absolute discretion, deal with the <i>Lot</i> in any manner which appears to us to recognise the legitimate interests of ourselves and the other parties involved and lawfully to protect our position and our legitimate interests. Without prejudice to the generality of the discretion and by way of example, we may:	9.5	If we are satisfied that a <i>Lot</i> is a <i>Forgery</i> we will (as principal) purchase the <i>Lot</i> from you and you will transfer the title to the <i>Lot</i> in question to us, with full title guarantee, free from any liens, charges, encumbrances and adverse claims, in accordance with the provisions of Sections 12(1) and 12(2) of the Sale of Goods Act 1979 and we will pay to you an amount equal to the sum of the <i>Purchase Price</i> , <i>Buyer's Premium</i> , <i>VAT</i> and <i>Expenses</i> paid by you in respect of the <i>Lot</i> .
7.1.6	to repossess the <i>Lot</i> (or any part thereof) which has not become your property, and for this purpose (unless you buy the <i>Lot</i> as a <i>Consumer</i> ) you hereby grant an irrevocable licence to us, by ourselves, our servants or agents, to enter upon all or any of your premises (with or without vehicles) during normal business hours to take possession of any <i>Lot</i> or part thereof;	8.1.1	retain the <i>Lot</i> to investigate any question raised or reasonably expected by us to be raised in relation to the <i>Lot</i> ; and/or	9.6	The benefit of paragraph 9 is personal to, and incapable of assignment by, you.
7.1.7	to sell the <i>Lot Without Reserve</i> by auction, private treaty or any other means on giving you three months' written notice of our intention to do so;	8.1.2	deliver the <i>Lot</i> to a person other than you; and/or	9.7	If you sell or otherwise dispose of your interest in the <i>Lot</i> , all rights and benefits under this paragraph will cease.
7.1.8	to retain possession of any of your other property in our possession for any purpose (including, without limitation, other goods sold to you or with us for <i>Sale</i> ) until all sums due to us have been paid in full;	8.1.3	commence interpleader proceedings or seek any other order of any court, mediator, arbitrator or government body; and/or	9.8	Paragraph 9 does not apply to a <i>Lot</i> made up of or including a Chinese painting or Chinese paintings, a motor vehicle or motor vehicles, a <i>Stamp</i> or <i>Stamps</i> or a <i>Book</i> or <i>Books</i> .
7.1.9	to apply any monies received from you for any purpose whether at the time of your default or at any time thereafter in payment or part payment of any sums due to us by you under this agreement;	8.1.4	require an indemnity and/or security from you in return for pursuing a course of action agreed to by you.		
7.1.10	on three months' written notice to sell, <i>Without Reserve</i> , any of your other property in our possession or under our control for any purpose (including other goods sold to you or with us for <i>Sale</i> ) and to apply any monies due to you as a result of such <i>Sale</i> in payment or part payment of any amounts owed to us;	8.2	The discretion referred to in paragraph 8.1:	<b>10</b>	<b>OUR LIABILITY</b>
7.1.11	refuse to allow you to register for a future <i>Sale</i> or to reject a bid from you at any future <i>Sale</i> or to require you to pay a deposit before any bid is accepted by us at any future <i>Sale</i> in which case we will be entitled to apply such deposit in payment or part payment, as the case may be, of the <i>Purchase Price</i> of any <i>Lot</i> of which you are the <i>Buyer</i> .	8.2.1	may be exercised at any time during which we have actual or constructive possession of the <i>Lot</i> , or at any time after such possession, where the cessation of such possession has occurred by reason of any decision, order or ruling of any court, mediator, arbitrator or government body; and	10.1	We will not be liable whether in negligence, other tort, breach of contract or statutory duty or in restitution or under the Misrepresentation Act 1967 or in any other way for lack of conformity with or any inaccuracy, error, misdescription or omission in any <i>Description</i> of the <i>Lot</i> or any <i>Entry</i> or <i>Estimate</i> in respect of it, made by us or on our behalf or by or on behalf of the <i>Seller</i> (whether made in writing, including in the <i>Catalogue</i> , or on the <i>Bonhams' Website</i> , or orally, or by conduct or otherwise) and whether made before or after this agreement or prior to or during the <i>Sale</i> .
7.2	You agree to indemnify us against all legal and other costs, all losses and all other <i>Expenses</i> (whether or not court proceedings will have been issued) incurred by us as a result of our taking steps under this paragraph 7 on a full indemnity basis together with interest thereon (after as well as before judgement or order) at the rate specified in paragraph 7.1.5 from the date upon which we become liable to pay the same until payment by you.	8.2.2	will not be exercised unless we believe that there exists a serious prospect of a good arguable case in favour of the claim.	10.2	Our duty to you while the <i>Lot</i> is at your risk and/or your property and in our custody and/or control is to exercise reasonable care in relation to it, but we will not be responsible for damage to the <i>Lot</i> or to other persons or things caused by:
		<b>9</b>	<b>FORGERIES</b>	10.2.1	handling the <i>Lot</i> if it was affected at the time of <i>Sale</i> to you by woodworm and any damage is caused as a result of it being affected by woodworm; or
		9.1	We undertake a personal responsibility for any <i>Forgery</i> in accordance with the terms of this paragraph 9.	10.2.2	changes in atmospheric pressure; nor will we be liable for:
		9.2	Paragraph 9 applies only if:	10.2.3	damage to tension stringed musical instruments; or
		9.2.1	your name appears as the named person to whom the original invoice was made out by us in respect of the <i>Lot</i> and that invoice has been paid; and	10.2.4	damage to gilded picture frames, plaster picture frames or picture frame glass; and if the <i>Lot</i> is or becomes dangerous, we may dispose of it without notice to you in advance in any manner we think fit and we will be under no liability to you for doing so.
		9.2.2	you notify us in writing as soon as reasonably practicable after you have become aware that the <i>Lot</i> is or may be a <i>Forgery</i> , and in any event within one year after the <i>Sale</i> , that the <i>Lot</i> is a <i>Forgery</i> ; and		
		9.2.3	within one month after such notification has been given, you return the <i>Lot</i> to us in the same condition as it was at the time of the <i>Sale</i> , accompanied by written evidence that the <i>Lot</i> is a <i>Forgery</i> and details of the <i>Sale</i> and <i>Lot</i> number sufficient to identify the <i>Lot</i> .		

10.3.1 We will not be liable to you for any loss of *Business*, *Business* profits, revenue or income or for loss of *Business* reputation or for disruption to *Business* or wasted time on the part of the *Buyer's* management or staff or, if you are buying the *Lot* in the course of a *Business*, for any indirect losses or consequential damages of any kind, irrespective in any case of the nature, volume or source of the loss or damage alleged to be suffered, and irrespective of whether the said loss or damage is caused by or claimed in respect of any negligence, other tort, breach of contract, statutory duty, bailee's duty, a restitutionary claim or otherwise.

10.3.2 Unless you buy the *Lot* as a *Consumer*, in any circumstances where we are liable to you in respect of a *Lot*, or any act, omission, statement, representation in respect of it, or this agreement or its performance, and whether in damages, for an indemnity or contribution or for a restitutionary remedy or in any way whatsoever, our liability will be limited to payment of a sum which will not exceed by way of maximum the amount of the *Purchase Price* of the *Lot* plus *Buyer's Premium* (less any sum you may be entitled to recover from the *Seller*) irrespective in any case of the nature, volume or source of any loss or damage alleged to be suffered or sum claimed as due, and irrespective of whether the liability arises from negligence, other tort, breach of contract, statutory duty, bailee's duty, a restitutionary claim or otherwise.

You may wish to protect yourself against loss by obtaining insurance.

10.4 Nothing set out above will be construed as excluding or restricting (whether directly or indirectly) any person's liability or excluding or restricting any person's rights or remedies in respect of (i) fraud, or (ii) death or personal injury caused by our negligence (or any person under our control or for whom we are legally responsible), or (iii) acts or omissions for which we are liable under the Occupiers Liability Act 1957, or (iv) any other liability to the extent the same may not be excluded or restricted as a matter of law, or (v) under our undertaking in paragraph 9 of these conditions.

## 11 BOOKS MISSING TEXT OR ILLUSTRATIONS

Where the *Lot* is made up wholly of a *Book* or *Books* and any *Book* does not contain text or illustrations (in either case referred to as a "non-conforming *Lot*"), we undertake a personal responsibility for such a non-conforming *Lot* in accordance with the terms of this paragraph, if:

the original invoice was made out by us to you in respect of the *Lot* and that invoice has been paid; and

you notify us in writing as soon as reasonably practicable after you have become aware that the *Lot* is or may be a non-conforming *Lot*, and in any event within 20 days after the *Sale* (or such longer period as we may agree in writing) that the *Lot* is a non-conforming *Lot*; and

within 20 days of the date of the relevant *Sale* (or such longer period as we may agree in writing) you return the *Lot* to us in the same condition as it was at the time of the *Sale*, accompanied by written evidence that the *Lot* is a non-conforming *Lot* and details of the *Sale* and *Lot* number sufficient to identify the *Lot*.

but not if:

the *Entry* in the *Catalogue* in respect of the *Lot* indicates that the rights given by this paragraph do not apply to it; or

the *Entry* in the *Catalogue* in respect of the *Lot* reflected the then accepted general opinion of scholars and experts or fairly indicated that there was a conflict of such opinion; or

it can be established that the *Lot* is a non-conforming *Lot* only by means of a process not generally accepted for use until after the date on which the *Catalogue* was published or by means of a process which it was unreasonable in all the circumstances for us to have employed; or

the *Lot* comprises atlases, maps, autographs, manuscripts, extra illustrated books, music or periodical publications; or

the *Lot* was listed in the *Catalogue* under "collections" or "collections and various" or the *Lot* was stated in the *Catalogue* to comprise or contain a collection, issue or *Books* which are undescribed or the missing text or illustrations are referred to or the relevant parts of the *Book* contain blanks, half titles or advertisements.

If we are reasonably satisfied that a *Lot* is a non-conforming *Lot*, we will (as principal) purchase the *Lot* from you and you will transfer the title to the *Lot* in question to us, with full title guarantee, free from any liens, charges, encumbrances and adverse claims and we will pay to you an amount equal to the sum of the *Purchase Price* and *Buyer's Premium* paid by you in respect of the *Lot*.

The benefit of paragraph 10 is personal to, and incapable of assignment by, you and if you sell or otherwise dispose of your interest in the *Lot*, all rights and benefits under this paragraph will cease.

## 12 MISCELLANEOUS

12.1 You may not assign either the benefit or burden of this agreement.

12.2 Our failure or delay in enforcing or exercising any power or right under this agreement will not operate or be deemed to operate as a waiver of our rights under it except to the extent of any express waiver given to you in writing. Any such waiver will not affect our ability subsequently to enforce any right arising under this agreement.

12.3 If either party to this agreement is prevented from performing that party's respective obligations under this agreement by circumstances beyond its reasonable control or if performance of its obligations would by reason of such circumstances give rise to a significantly increased financial cost to it, that party will not, for so long as such circumstances prevail, be required to perform such obligations. This paragraph does not apply to the obligations imposed on you by paragraph 3.

12.4 Any notice or other communication to be given under this agreement must be in writing and may be delivered by hand or sent by first class post or air mail or fax transmission (if to *Bonhams* marked for the attention of the Company Secretary), to the address or fax number of the relevant party given in the *Contract Form* (unless notice of any change of address is given in writing). It is the responsibility of the sender of the notice or communication to ensure that it is received in a legible form within any applicable time period.

12.5 If any term or any part of any term of this agreement is held to be unenforceable or invalid, such unenforceability or invalidity will not affect the enforceability and validity of the remaining terms or the remainder of the relevant term.

12.6 References in this agreement to *Bonhams* will, where appropriate, include reference to *Bonhams'* officers, employees and agents.

12.7 The headings used in this agreement are for convenience only and will not affect its interpretation.

12.8 In this agreement "including" means "including, without limitation".

12.9 References to the singular will include reference to the plural (and vice versa) and reference to any one gender will include reference to the other genders.

12.10 Reference to a numbered paragraph is to a paragraph of this agreement.

12.11 Save as expressly provided in paragraph 12.12 nothing in this agreement confers (or purports to confer) on any person who is not a party to this agreement any benefit conferred by, or the right to enforce any term of, this agreement.

12.12 Where this agreement confers an immunity from, and/or an exclusion or restriction of, the responsibility and/or liability of *Bonhams*, it will also operate in favour and for the benefit of *Bonhams'* holding company and the subsidiaries of such holding company and the successors and assigns of *Bonhams* and of such companies and of any officer, employee and agent of *Bonhams* and such companies, each of whom will be entitled to rely on the relevant immunity and/or exclusion and/or restriction within and for the purposes of Contracts (Rights of Third Parties) Act 1999, which enables the benefit of a contract to be extended to a person who is not a party to the contract, and generally at law.

## 13 GOVERNING LAW

All transactions to which this agreement applies and all connected matters will be governed by and construed in accordance with the laws of that part of the United Kingdom where the *Sale* takes (or is to take) place and we and you each submit to the exclusive jurisdiction of the courts of that part of the United Kingdom, save that we may bring proceedings against you in any other court of competent jurisdiction to the extent permitted by the laws of the relevant jurisdiction. *Bonhams* has a complaints procedure in place.

## DATA PROTECTION – USE OF YOUR INFORMATION

Where we obtain any personal information about you, we shall only use it in accordance with the terms of our Privacy Policy (subject to any additional specific consent(s) you may have given at the time your information was disclosed). A copy of our Privacy Policy can be found on our *Website* [www.bonhams.com](http://www.bonhams.com) or requested by post from Customer Services Department, 101 New Bond Street, London W1S 1SR, United Kingdom or by email from [info@bonhams.com](mailto:info@bonhams.com).

## APPENDIX 3

### DEFINITIONS AND GLOSSARY

Where these Definitions and Glossary are incorporated, the following words and phrases used have (unless the context otherwise requires) the meanings given to them below. The Glossary is to assist you to understand words and phrases which have a specific legal meaning with which you may not be familiar.

### LIST OF DEFINITIONS

"Additional Premium" a premium, calculated in accordance with the *Notice to Bidders*, to cover *Bonhams'* Expenses relating to the payment of royalties under the Artists Resale Right Regulations 2006 which is payable by the *Buyer* to *Bonhams* on any *Lot* marked [AR] which sells for a *Hammer Price* which together with the *Buyer's Premium* (but excluding any VAT) equals or exceeds 1000 euros (converted into the currency of the *Sale* using the European Central Bank Reference rate prevailing on the date of the *Sale*).  
"Auctioneer" the representative of *Bonhams* conducting the *Sale*.

**"Bidder"** a person who has completed a *Bidding Form*.

**"Bidding Form"** our Bidding Registration Form, our Absentee Bidding Form or our Telephone Bidding Form.

**"Bonhams"** Bonhams 1793 Limited or its successors or assigns. *Bonhams* is also referred to in the *Buyer's Agreement*, the Conditions of Business and the *Notice to Bidders* by the words "we", "us" and "our".

**"Book"** a printed *Book* offered for *Sale* at a specialist *Book Sale*.

**"Business"** includes any trade, *Business* and profession.

**"Buyer"** the person to whom a *Lot* is knocked down by the *Auctioneer*. The *Buyer* is also referred to in the *Contract for Sale* and the *Buyer's Agreement* by the words "you" and "your".

**"Buyer's Agreement"** the contract entered into by *Bonhams* with the *Buyer* (see Appendix 2 in the *Catalogue*).

**"Buyer's Premium"** the sum calculated on the *Hammer Price* at the rates stated in the *Notice to Bidders*.

**"Catalogue"** the *Catalogue* relating to the relevant *Sale*, including any representation of the *Catalogue* published on our *Website*.

**"Commission"** the *Commission* payable by the *Seller* to *Bonhams* calculated at the rates stated in the *Contract Form*.

**"Condition Report"** a report on the physical condition of a *Lot* provided to a *Bidder* or potential *Bidder* by *Bonhams* on behalf of the *Seller*.

**"Conditions of Sale"** the *Notice to Bidders*, *Contract for Sale*, *Buyer's Agreement* and Definitions and Glossary.

**"Consignment Fee"** a fee payable to *Bonhams* by the *Seller* calculated at rates set out in the Conditions of Business.

**"Consumer"** a natural person who is acting for the relevant purpose outside his trade, *Business* or profession.

**"Contract Form"** the *Contract Form*, or vehicle *Entry* form, as applicable, signed by or on behalf of the *Seller* listing the *Lots* to be offered for *Sale* by *Bonhams*.

**"Contract for Sale"** the *Sale* contract entered into by the *Seller* with the *Buyer* (see Appendix 1 in the *Catalogue*).

**"Contractual Description"** the only *Description* of the *Lot* (being that part of the *Entry* about the *Lot* in the *Catalogue* which is in bold letters, any photograph (except for the colour) and the contents of any *Condition Report*) to which the *Seller* undertakes in the *Contract for Sale* the *Lot* corresponds.

**"Description"** any statement or representation in any way descriptive of the *Lot*, including any statement or representation relating to its authorship, attribution, condition, provenance, authenticity, style, period, age, suitability, quality, origin, value, estimated selling price (including the *Hammer Price*).

**"Entry"** a written statement in the *Catalogue* identifying the *Lot* and its *Lot* number which may contain a *Description* and illustration(s) relating to the *Lot*.

**"Estimate"** a statement of our opinion of the range within which the hammer is likely to fall.

**"Expenses"** charges and *Expenses* paid or payable by *Bonhams* in respect of the *Lot* including legal *Expenses*, banking charges and *Expenses* incurred as a result of an electronic transfer of money, charges and *Expenses* for loss and damage cover, insurance, *Catalogue* and other reproductions and illustrations, any customs duties, advertising, packing or shipping costs, reproductions rights' fees, taxes, levies, costs of testing, searches or enquiries, preparation of the *Lot* for *Sale*, storage charges, removal charges, removal charges or costs of collection from the *Seller* as the *Seller's* agents or from a defaulting *Buyer*, plus *VAT* if applicable.

**"Forgery"** an imitation intended by the maker or any other person to deceive as to authorship, attribution, origin, authenticity, style, date, age, period, provenance, culture, source or composition, which at the date of the *Sale* had a value materially less than it would have had if the *Lot* had not been such an imitation, and which is not stated to be such an imitation in any description of the *Lot*. A *Lot* will not be a *Forgery* by reason of any damage to, and/or restoration and/or modification work (including repainting or over painting) having been carried out on the *Lot*, where that damage, restoration or modification work (as the case may be) does not substantially affect the identity of the *Lot* as one conforming to the *Description* of the *Lot*.

**"Guarantee"** the obligation undertaken personally by *Bonhams* to the *Buyer* in respect of any *Forgery* and, in the case of specialist *Stamp Sales* and/or specialist *Book Sales*, a *Lot* made up of a *Stamp* or *Stamps* or a *Book* or *Books* as set out in the *Buyer's Agreement*.

**"Hammer Price"** the price in the currency in which the *Sale* is conducted at which a *Lot* is knocked down by the *Auctioneer*.

**"Loss and Damage Warranty"** means the warranty described in paragraph 8.2 of the Conditions of Business.

**"Loss and Damage Warranty Fee"** means the fee described in paragraph 8.2.3 of the Conditions of Business.

**"Lot"** any item consigned to *Bonhams* with a view to its *Sale* at auction or by private treaty (and reference to any *Lot* will include, unless the context otherwise requires, reference to individual items comprised in a group of two or more items offered for *Sale* as one *Lot*).

**"Motoring Catalogue Fee"** a fee payable by the *Seller* to *Bonhams* in consideration of the additional work undertaken by *Bonhams* in respect of the cataloguing of motor vehicles and in respect of the promotion of *Sales* of motor vehicles.

**"New Bond Street"** means *Bonhams's* saleroom at 101 New Bond Street, London W1S 1SR.

**"Notional Charges"** the amount of *Commission* and *VAT* which would have been payable if the *Lot* had been sold at the *Notional Price*.

**"Notional Fee"** the sum on which the *Consignment Fee* payable to *Bonhams* by the *Seller* is based and which is calculated according to the formula set out in the Conditions of Business.

**"Notional Price"** the latest in time of the average of the high and low *Estimates* given by us to you or stated in the *Catalogue* or, if no such *Estimates* have been given or stated, the *Reserve* applicable to the *Lot*.

**"Notice to Bidders"** the notice printed at the back or front of our *Catalogues*.

**"Purchase Price"** the aggregate of the *Hammer Price* and *VAT* on the *Hammer Price* (where applicable), the *Buyer's Premium* and *VAT* on the *Buyer's Premium* and any *Expenses*.

**"Reserve"** the minimum price at which a *Lot* may be sold (whether at auction or by private treaty).

**"Sale"** the auction *Sale* at which a *Lot* is to be offered for *Sale* by *Bonhams*.

**"Sale Proceeds"** the net amount due to the *Seller* from the *Sale* of a *Lot*, being the *Hammer Price* less the *Commission*, any *VAT* chargeable thereon, *Expenses* and any other amount due to us in whatever capacity and howsoever arising.

**"Seller"** the person who offers the *Lot* for *Sale* named on the *Contract Form*. Where the person so named identifies on the form another person as acting as his agent, or where the person named on the *Contract Form* acts as an agent for a principal (whether such agency is disclosed to *Bonhams* or not), "*Seller*" includes both the agent and the principal who shall be jointly and severally liable as such. The *Seller* is also referred to in the Conditions of Business by the words "you" and "your".

**"Specialist Examination"** a visual examination of a *Lot* by a specialist on the *Lot*.

**"Stamp"** means a postage *Stamp* offered for *Sale* at a Specialist *Stamp Sale*.

**"Standard Examination"** a visual examination of a *Lot* by a non-specialist member of *Bonhams's* staff.

**"Storage Contract"** means the contract described in paragraph 8.3.3 of the Conditions of Business or paragraph 4.4 of the *Buyer's Agreement* (as appropriate).

**"Storage Contractor"** means the company identified as such in the *Catalogue*.

**"Terrorism"** means any act or threatened act of terrorism, whether any person is acting alone or on behalf of or in connection with any organisation(s) and/or government(s), committed for political, religious or ideological or similar purposes including, but not limited to, the intention to influence any government and/or put the public or any section of the public into fear.

**"Trust Account"** the bank account of *Bonhams* into which all sums received in respect of the *Purchase Price* of any *Lot* will be paid, such account to be a distinct and separate account to *Bonhams's* normal business bank account.

**"VAT"** value added tax at the prevailing rate at the date of the *Sale* in the United Kingdom.

**"Website"** *Bonhams Website* at [www.bonhams.com](http://www.bonhams.com)

**"Withdrawal Notice"** the *Seller's* written notice to *Bonhams* revoking *Bonhams's* instructions to sell a *Lot*.

**"Without Reserve"** where there is no minimum price at which a *Lot* may be sold (whether at auction or by private treaty).

## GLOSSARY

The following expressions have specific legal meanings with which you may not be familiar. The following glossary is intended to give you an understanding of those expressions but is not intended to limit their legal meanings:

**"artist's resale right"**: the right of the creator of a work of art to receive a payment on *Sales* of that work subsequent to the original *Sale* of that work by the creator of it as set out in the Artists Resale Right Regulations 2006.

**"bailee"**: a person to whom goods are entrusted.

**"indemnity"**: an obligation to put the person who has the benefit of the indemnity in the same position in which he would have been, had the circumstances giving rise to the indemnity not arisen and the expression "indemnity" is construed accordingly.

**"interpleader proceedings"**: proceedings in the Courts to determine ownership or rights over a *Lot*.

**"knocked down"**: when a *Lot* is sold to a *Bidder*, indicated by the fall of the hammer at the *Sale*.

**"lien"**: a right for the person who has possession of the *Lot* to retain possession of it.

**"risk"**: the possibility that a *Lot* may be lost, damaged, destroyed, stolen, or deteriorate in condition or value.

**"title"**: the legal and equitable right to the ownership of a *Lot*.

**"tort"**: a legal wrong done to someone to whom the wrong doer has a duty of care.

## SALE OF GOODS ACT 1979

The following is an extract from the Sale of Goods Act 1979:

"Section 12 Implied terms about title, etc

- (1) In a contract of sale, other than one to which subsection (3) below applies, there is an implied term on the part of the seller that in the case of a sale he has a right to sell the goods, and in the case of an agreement to sell he will have such a right at the time when the property is to pass.
- (2) In a contract of sale, other than one to which subsection (3) below applies, there is also an implied term that-
  - (a) the goods are free, and will remain free until the time when the property is to pass, from any charge or encumbrance not disclosed or known to the buyer before the contract is made, and
  - (b) the buyer will enjoy quiet possession of the goods except in so far as it may be disturbed by the owner or other person entitled to the benefit of any charge or encumbrance so disclosed or known.
- (3) This subsection applies to a contract of sale in the case of which there appears from the contract or is to be inferred from its circumstances an intention that the seller should transfer only such title as he or a third person may have.
- (4) In a contract to which subsection (3) above applies there is an implied term that all charges or encumbrances known to the seller and not known to the buyer have been disclosed to the buyer before the contract is made.
- (5) In a contract to which subsection (3) above applies there is also an implied term that none of the following will disturb the buyer's quiet possession of the goods, namely:
  - (a) the seller;
  - (b) in a case where the parties to the contract intend that the seller should transfer only such title as a third person may have, that person;
  - (c) anyone claiming through or under the seller or that third person otherwise than under a charge or encumbrance disclosed or known to the buyer before the contract is made.
- (5A) As regards England and Wales and Northern Ireland, the term implied by subsection (1) above is a condition and the terms implied by subsections (2), (4) and (5) above are warranties."

# Bonhams Specialist Departments

To e-mail any of the below use the first name dot second name @bonhams.com eg. charles.obrien@bonhams.com

## 19th Century Paintings

UK  
Charles O' Brien  
+44 20 7468 8360  
U.S.A  
Madalina Lazen  
+1 212 644 9108

## 20th Century British Art

Matthew Bradbury  
+44 20 7468 8295

## Aboriginal Art

Francesca Cavazzini  
+61 2 8412 2222

## African, Oceanic & Pre-Columbian Art

U.S.A  
Fredric Backlar  
+1 323 436 5416

## American Paintings

Kayla Carlsen  
+1 917 206 1699

## Antiquities

Siobhan Quin  
+44 20 7468 8225

## Antique Arms & Armour

UK  
David Williams  
+44 20 7393 3807  
U.S.A  
Paul Carella  
+1 415 503 3360

## Art Collections, Estates & Valuations

Harvey Cammell  
+44 (0) 20 7468 8340

## Art Nouveau & Decorative Art & Design

UK  
Mark Oliver  
+44 20 7393 3856  
U.S.A  
Frank Maraschiello  
+1 212 644 9059

## Australian Art

Merryn Schriever  
+61 2 8412 2222  
Alex Clark  
+61 3 8640 4088

## Australian Colonial Furniture and Australiana

+61 2 8412 2222

## Books, Maps & Manuscripts

UK  
Matthew Haley  
+44 20 7393 3817  
U.S.A  
Christina Geiger  
+1 212 644 9094

## British & European Glass

UK  
John Sandon  
+44 20 7468 8244  
U.S.A.  
Suzy Pai  
+1 415 503 3343

## British Ceramics

UK  
John Sandon  
+44 20 7468 8244

## California & American Paintings

Scot Levitt  
+1 323 436 5425

## Carpets

UK  
carpets@bonhams.com  
U.S.A.  
Hadjji Rahimpour  
+1 415 503 3392

## Chinese & Asian Art

UK  
Asaph Hyman  
+44 20 7468 5888  
U.S.A  
Dessa Goddard  
+1 415 503 3333  
HONG KONG  
+852 3607 0010  
AUSTRALIA  
Yvett Klein  
+61 2 8412 2222

## Clocks

UK  
James Stratton  
+44 20 7468 8364  
U.S.A  
Jonathan Snellenburg  
+1 212 461 6530

## Coins & Medals

UK  
John Millensted  
+44 20 7393 3914  
U.S.A  
Paul Song  
+1 323 436 5455

## Contemporary Art

UK  
Ralph Taylor  
+44 20 7447 7403  
U.S.A  
Jeremy Goldsmith  
+1 917 206 1656

## Entertainment Memorabilia

UK  
Katherine Schofield  
+44 20 7393 3871  
U.S.A  
Catherine Williamson  
+1 323 436 5442

## European Ceramics

UK  
Sebastian Kuhn  
+44 20 7468 8384  
U.S.A  
Peter Scott  
+1 415 503 3326

## Furniture

UK  
Thomas Moore  
+44 20 8963 2816  
U.S.A  
Andrew Jones  
+1 415 503 3413

## European Sculptures & Works of Art

UK  
Michael Lake  
+44 20 8963 6813

## Greek Art

Olympia Pappa  
+44 20 7468 8314

## Golf Sporting Memorabilia

Kevin Mcgimpsey  
+44 131 240 2296

## Irish Art

Penny Day  
+44 20 7468 8366

## Impressionist & Modern Art

UK  
India Phillips  
+44 20 7468 8328  
U.S.A  
William O'Reilly  
+1 212 644 9135

## Indian, Himalayan & Southeast Asian Art

H.K.  
Edward Wilkinson  
+85 22 918 4321  
U.S.A  
Mark Rasmussen  
+1 917 206 1688

## Islamic & Indian Art

Oliver White  
+44 20 7468 8303

## Japanese Art

UK  
Suzannah Yip  
+44 20 7468 8368  
U.S.A  
Jeff Olson  
+1 212 461 6516

## Jewellery

UK  
Jean Ghika  
+44 20 7468 8282  
U.S.A  
Susan Abeles  
+1 212 461 6525  
HONG KONG  
Graeme Thompson  
+852 3607 0006

## Marine Art

UK  
Veronique Scorer  
+44 20 7393 3962  
U.S.A  
Gregg Dietrich  
+1 917 206 1697

## Mechanical Music

Jon Baddeley  
+44 20 7393 3872

## Modern, Contemporary & Latin American Art

U.S.A  
Alexis Chompaisal  
+1 323 436 5469

## Modern Design

Gareth Williams  
+44 20 7468 5879

## Motor Cars

UK  
Tim Schofield  
+44 20 7468 5804  
U.S.A  
Mark Osborne  
+1 415 503 3353  
EUROPE  
Philip Kantor  
+32 476 879 471

## Automobilia

UK  
Toby Wilson  
+44 8700 273 619  
Adrian Pipiros  
+44 8700 273621

## Motorcycles

Ben Walker  
+44 8700 273616

## Native American Art

Ingmars Lindbergs  
+1 415 503 3393

## Natural History

U.S.A  
Claudia Florian  
+1 323 436 5437

## Old Master Pictures

UK  
Andrew Mckenzie  
+44 20 7468 8261  
U.S.A  
Mark Fisher  
+1 323 436 5488

## Orientalist Art

Charles O'Brien  
+44 20 7468 8360

## Photography

U.S.A  
Judith Eurich  
+1 415 503 3259

## Prints and Multiples

UK  
Lucia Tro Santafe  
+44 20 7468 8262  
U.S.A  
Judith Eurich  
+1 415 503 3259

## Russian Art

UK  
Daria Chernenko  
+44 20 7468 8334  
U.S.A  
Yelena Harbick  
+1 212 644 9136

## Scientific Instruments

Jon Baddeley  
+44 20 7393 3872  
U.S.A.  
Jonathan Snellenburg  
+1 212 461 6530

## Scottish Pictures

Chris Brickley  
+44 131 240 2297

## Silver & Gold Boxes

UK  
Ellis Finch  
+44 20 7393 3973  
U.S.A  
Aileen Ward  
+1 323 436 5463

## South African Art

Giles Peppiatt  
+44 20 7468 8355

## Sporting Guns

Patrick Hawes  
+44 20 7393 3815

## Travel Pictures

Veronique Scorer  
+44 20 7393 3962

## Urban Art

Gareth Williams  
+44 20 7468 5879

## Watches & Wristwatches

UK  
Jonathan Darracott  
+44 20 7447 7412  
U.S.A.  
Jonathan Snellenburg  
+1 212 461 6530

## Whisky

UK  
Martin Green  
+44 1292 520000  
U.S.A  
Erin McGrath  
+1 415 503 3363  
HONG KONG  
Daniel Lam  
+852 3607 0004

## Wine

UK  
Richard Harvey  
+44 (0) 20 7468 5811  
U.S.A  
Kate Wollman  
+1 415 503 3221  
Erin McGrath  
+1 415 503 3363  
HONG KONG  
Daniel Lam  
+852 3607 0004



## UNITED KINGDOM

**London**  
101 New Bond Street ●  
London W1S 1SR  
+44 20 7447 7447  
+44 20 7447 7400 fax

Montpelier Street ●  
London SW7 1HH  
+44 20 7393 3900  
+44 20 7393 3905 fax

### South East England

**Guildford**  
Millmead,  
Guildford,  
Surrey GU2 4BE  
+44 1483 504 030  
+44 1483 450 205 fax

**Isle of Wight**  
+44 1273 220 000

Representative:  
**Brighton & Hove**  
Tim Squire-Sanders  
+44 1273 220 000

**West Sussex**  
+44 (0) 1273 220 000

### South West England

**Bath**  
Queen Square House  
Charlotte Street  
Bath BA1 2LL  
+44 1225 788 988  
+44 1225 446 675 fax

**Cornwall – Truro**  
36 Lemon Street  
Truro  
Cornwall  
TR1 2NR  
+44 1872 250 170  
+44 1872 250 179 fax

**Exeter**  
The Lodge  
Southernhay West Exeter,  
Devon  
EX1 1JG  
+44 1392 425 264  
+44 1392 494 561 fax

**Tetbury**  
22a Long Street  
Tetbury  
Gloucestershire  
GL8 8AQ  
+44 1666 502 200  
+44 1666 505 107 fax

Representatives:  
**Dorset**  
Bill Allan  
+44 1935 815 271

**East Anglia and Bury St. Edmunds**  
Michael Steel  
+44 1284 716 190

**Norfolk**  
The Market Place  
Reepham  
Norfolk NR10 4JJ  
+44 1603 871 443  
+44 1603 872 973 fax

## Midlands

**Knowle**  
The Old House  
Station Road  
Knowle, Solihull  
West Midlands  
B93 0HT  
+44 1564 776 151  
+44 1564 778 069 fax

**Oxford**  
Banbury Road  
Shipton on Cherwell  
Kidlington OX5 1JH  
+44 1865 853 640  
+44 1865 372 722 fax

### Yorkshire & North East England

**Leeds**  
30 Park Square West  
Leeds LS1 2PF  
+44 113 234 5755  
+44 113 244 3910 fax

### North West England

**Chester**  
2 St Johns Court,  
Vicars Lane,  
Chester,  
CH1 1QE  
+44 1244 313 936  
+44 1244 340 028 fax

**Manchester**  
The Stables  
213 Ashley Road  
Hale WA15 9TB  
+44 161 927 3822  
+44 161 927 3824 fax

### Channel Islands

**Jersey**  
La Chasse  
La Rue de la Vallee  
St Mary  
Jersey JE3 3DL  
+44 1534 722 441  
+44 1534 759 354 fax

Representative:  
**Guernsey**  
+44 1481 722 448

### Scotland

**Edinburgh ●**  
22 Queen Street  
Edinburgh  
EH2 1JX  
+44 131 225 2266  
+44 131 220 2547 fax

**Bonhams West of Scotland**  
Kirkhill House  
Broom Road East  
Newton Mearns  
Glasgow  
G77 5LL  
+44 141 223 8866  
+44 141 223 8868 fax

Representatives:  
**Wine & Spirits**  
Tom Gilbey  
+44 1382 330 256

### Wales

Representatives:  
**Cardiff**  
Jeff Muse  
+44 2920 727 980

## EUROPE

**Belgium**  
Boulevard  
Saint-Michel 101  
1040 Brussels  
+32 (0) 2 736 5076  
belgium@bonhams.com

**Denmark**  
Henning Thomsen  
+45 4178 4799  
denmark@bonhams.com

**France**  
4 rue de la Paix  
75002 Paris  
+33 (0) 1 42 61 10 10  
paris@bonhams.com

**Germany - Cologne**  
Albertusstrasse 26  
50667 Cologne  
+49 (0) 221 2779 9650  
cologne@bonhams.com

**Germany - Munich**  
Maximilianstrasse 52  
80538 Munich  
+49 (0) 89 2420 5812  
munich@bonhams.com

**Greece**  
7 Neofytou Vamva Street  
Athens 10674  
+30 (0) 210 3636 404  
athens@bonhams.com

**Ireland**  
31 Molesworth Street  
Dublin 2  
+353 (0) 1 602 0990  
dublin@bonhams.com

**Italy - Milan**  
Via Boccaccio 22  
20123 Milano  
+39 0 2 4953 9020  
milan@bonhams.com

**Italy - Rome**  
Via Sicilia 50  
00187 Roma  
+39 0 6 48 5900  
rome@bonhams.com

**The Netherlands**  
De Lairesestraat 154  
1075 HL Amsterdam  
+31 (0) 20 67 09 701  
amsterdam@bonhams.com

**Portugal**  
Rua Bartolomeu Dias nº  
160. 1º  
Belem  
1400-031 Lisbon  
+351 218 293 291  
portugal@bonhams.com

**Spain - Barcelona**  
Teresa Ybarra  
+34 930 087 876  
barcelona@bonhams.com

**Spain - Madrid**  
Nunez de Balboa no 4-1A  
28001 Madrid  
+34 915 78 17 27  
madrid@bonhams.com

**Spain - Marbella**  
Johann Leibbrandt  
+34 915 78 17 27  
or Teresa Ybarra  
+34 930 087 876  
marbella@bonhams.com

**Switzerland - Geneva**  
Rue Etienne-Dumont 10  
1204 Geneva  
+41 (0) 22 300 3160  
geneva@bonhams.com

**Switzerland - Zurich**  
Andrea Bodmer  
Dreikönigstrasse 31a  
8002 Zürich  
+41 44 281 9535  
zurich@bonhams.com

## MIDDLE EAST

**Israel**  
Joslyne Halibard  
+972 (0)54 553 5337  
joslyne.halibard@  
bonhams.com

## NORTH AMERICA

### USA

**San Francisco ●**  
220 San Bruno Avenue  
San Francisco  
CA 94103  
+1 (415) 861 7500  
+1 (415) 861 8951 fax

**Los Angeles ●**  
7601 W. Sunset Boulevard  
Los Angeles  
CA 90046  
+1 (323) 850 7500  
+1 (323) 850 6090 fax

**New York ●**  
580 Madison Avenue  
New York, NY  
10022  
+1 (212) 644 9001  
+1 (212) 644 9007 fax

Representatives:

**Arizona**  
Terri Adrian-Hardy  
+1 (480) 994 5362  
arizona@bonhams.com

**California Central Valley**  
David Daniel  
+1 (916) 364 1645  
sacramento@bonhams.com

**Colorado**  
Julie Segraves  
+1 (720) 355 3737  
colorado@bonhams.com

**Florida**  
Jon King  
Palm Beach  
+1 (561) 651 7876  
Miami  
+1 (305) 228 6600  
Ft. Lauderdale  
+1 (954) 566 1630  
florida@bonhams.com

**Georgia**  
Mary Moore Bethea  
+1 (404) 842 1500  
georgia@bonhams.com

**Illinois**  
Ricki Blumberg Harris  
+1 (773) 267 3300  
+1 (773) 680 2881  
chicago@bonhams.com

**Massachusetts**  
Amy Corcoran  
+1 (617) 742 0909  
boston@bonhams.com

**Nevada**  
David Daniel  
+1 (775) 831 0330  
nevada@bonhams.com

**New Jersey**  
Alan Fausel  
+1 (973) 997 9954  
newjersey@bonhams.com

**New Mexico**  
Michael Bartlett  
+1 (505) 820 0701  
newmexico@bonhams.com

**Oregon**  
Sheryl Acheson  
+1(503) 312 6023  
oregon@bonhams.com

**Pennsylvania**  
Alan Fausel  
+1 (610) 644 1199  
pennsylvania@bonhams.com

**Texas**  
Amy Lawch  
+1 (713) 621 5988  
texas@bonhams.com

**Virginia**  
Gertraud Hechl  
+1 (540) 454 2437  
virginia@bonhams.com

**Washington**  
Heather O'Mahony  
+1 (206) 218 5011  
seattle@bonhams.com

**Washington DC**  
Martin Gammon  
+1 (202) 333 1696  
washingtonDC  
@bonhams.com

### CANADA

**Toronto, Ontario ●**  
Jack Kerr-Wilson  
20 Hazelton Avenue  
Toronto, ONT  
M5R 2E2  
+1 (416) 462 9004  
info.ca@bonhams.com

**Montreal, Quebec**  
David Kelsey  
+1 (514) 894 1138  
info.ca@bonhams.com

## SOUTH AMERICA

**Brazil**  
+55 11 3031 4444  
+55 11 3031 4444 fax

## ASIA

**Hong Kong ●**  
Suite 2001  
One Pacific Place  
88 Queensway  
Admiralty  
Hong Kong  
+852 2918 4321  
+852 2918 4320 fax  
hongkong@bonhams.com

**Beijing**  
Suite 511  
Chang An Club  
10 East Chang An Avenue  
Beijing 100006  
+86(0) 10 6528 0922  
+86(0) 10 6528 0933 fax  
beijing@bonhams.com

**Singapore**  
Bernadette Rankine  
11th Floor, Wisma Atria  
435 Orchard Road  
Singapore 238877  
+65 (0) 6701 8038  
+65 (0) 6701 8001 fax  
bernadette.rankine@  
bonhams.com

**Taiwan**  
Summer Fang  
37th Floor, Taipei 101 Tower  
Nor 7 Xinyi Road, Section 5  
Taipei, 100  
+886 2 8758 2898  
+886 2 8758 2897 fax  
summer.fang@  
bonhams.com

## AUSTRALIA

**Sydney**  
97-99 Queen Street,  
Woollahra, NSW 2025  
Australia  
+61 (0) 2 8412 2222  
+61 (0) 2 9475 4110 fax  
info.aus@bonhams.com

**Melbourne**  
Como House  
Como Avenue  
South Yarra  
Melbourne VIC 3141  
Australia  
+61 (0) 3 8640 4088  
+61 (0) 2 9475 4110 fax  
info.aus@bonhams.com

## AFRICA

**Nigeria**  
Neil Coventry  
+234 (0)7065 888 666  
neil.coventry@bonhams.com

**South Africa - Johannesburg**  
Penny Culverwell  
+27 (0)71 342 2670  
penny.culverwell@bonhams.com

# Registration and Bidding Form

(Attendee / Absentee / Online / Telephone Bidding)

Please circle your bidding method above.

# Bonhams

--	--	--	--

## Paddle number (for office use only)

**This sale will be conducted in accordance with Bonhams' Conditions of Sale and bidding and buying at the Sale will be regulated by these Conditions. You should read the Conditions in conjunction with the Sale Information relating to this Sale which sets out the charges payable by you on the purchases you make and other terms relating to bidding and buying at the Sale. You should ask any questions you have about the Conditions before signing this form. These Conditions also contain certain undertakings by bidders and buyers and limit Bonhams' liability to bidders and buyers.**

## Data protection – use of your information

Where we obtain any personal information about you, we shall only use it in accordance with the terms of our Privacy Policy (subject to any additional specific consent(s) you may have given at the time your information was disclosed). A copy of our Privacy Policy can be found on our website (www.bonhams.com) or requested by post from Customer Services Department, 101 New Bond Street, London W1S 1SR United Kingdom or by e-mail from info@bonhams.com.

## Credit and Debit Card Payments

There is no surcharge for payments made by debit cards issued by a UK bank. All other debit cards and all credit cards are subject to a 2% surcharge on the total invoice price.

## Notice to Bidders.

Clients are requested to provide photographic proof of ID - passport, driving licence, ID card, together with proof of address - utility bill, bank or credit card statement etc. Corporate clients should also provide a copy of their articles of association / company registration documents, together with a letter authorising the individual to bid on the company's behalf. Failure to provide this may result in your bids not being processed. For higher value lots you may also be asked to provide a bank reference.

## If successful

I will collect the purchases myself

Please contact me with a shipping quote (if applicable)

Sale title: Asian Art		Sale date: Wednesday 22 March 2017													
Sale no. 24081		Sale venue: Edinburgh													
<p>If you are not attending the sale in person, please provide details of the Lots on which you wish to bid at least 24 hours prior to the sale. Bids will be rounded down to the nearest increment. Please refer to the Notice to Bidders in the catalogue for further information relating to Bonhams executing telephone, online or absentee bids on your behalf. Bonhams will endeavour to execute these bids on your behalf but will not be liable for any errors or failing to execute bids.</p> <p><b>General Bid Increments:</b></p> <table border="0"> <tr> <td>£10 - 200 .....by 10s</td> <td>£10,000 - 20,000 .....by 1,000s</td> </tr> <tr> <td>£200 - 500 .....by 20 / 50 / 80s</td> <td>£20,000 - 50,000 .....by 2,000 / 5,000 / 8,000s</td> </tr> <tr> <td>£500 - 1,000 .....by 50s</td> <td>£50,000 - 100,000 .....by 5,000s</td> </tr> <tr> <td>£1,000 - 2,000 .....by 100s</td> <td>£100,000 - 200,000 .....by 10,000s</td> </tr> <tr> <td>£2,000 - 5,000 .....by 200 / 500 / 800s</td> <td>above £200,000 .....at the auctioneer's discretion</td> </tr> <tr> <td>£5,000 - 10,000 .....by 500s</td> <td></td> </tr> </table> <p>The auctioneer has discretion to split any bid at any time.</p>				£10 - 200 .....by 10s	£10,000 - 20,000 .....by 1,000s	£200 - 500 .....by 20 / 50 / 80s	£20,000 - 50,000 .....by 2,000 / 5,000 / 8,000s	£500 - 1,000 .....by 50s	£50,000 - 100,000 .....by 5,000s	£1,000 - 2,000 .....by 100s	£100,000 - 200,000 .....by 10,000s	£2,000 - 5,000 .....by 200 / 500 / 800s	above £200,000 .....at the auctioneer's discretion	£5,000 - 10,000 .....by 500s	
£10 - 200 .....by 10s	£10,000 - 20,000 .....by 1,000s														
£200 - 500 .....by 20 / 50 / 80s	£20,000 - 50,000 .....by 2,000 / 5,000 / 8,000s														
£500 - 1,000 .....by 50s	£50,000 - 100,000 .....by 5,000s														
£1,000 - 2,000 .....by 100s	£100,000 - 200,000 .....by 10,000s														
£2,000 - 5,000 .....by 200 / 500 / 800s	above £200,000 .....at the auctioneer's discretion														
£5,000 - 10,000 .....by 500s															
Customer Number		Title													
First Name		Last Name													
Company name (to be invoiced if applicable)															
Address															
City		County / State													
Post / Zip code		Country													
Telephone mobile		Telephone daytime													
Telephone evening		Fax													
Preferred number(s) in order for Telephone Bidding (inc. country code)															
E-mail (in capitals)															
By providing your email address above, you authorise Bonhams to send you marketing material and news concerning Bonhams and partner organisations. Bonhams does not sell or trade email addresses.															
I am registering to bid as a private client <input type="checkbox"/>		I am registering to bid as a trade client <input type="checkbox"/>													
If registered for VAT in the EU please enter your registration here: □□ / □□□□ - □□□□□□ - □□		Please tick if you have registered with us before <input type="checkbox"/>													

Please note that all telephone calls are recorded.

Telephone or Absentee (T / A)	Lot no.	Brief description	MAX bid in GBP (excluding premium & VAT)	Covering bid*

## FOR WINE SALES ONLY

Please leave lots "available under bond" in bond  I will collect from Park Royal or bonded warehouse  Please include delivery charges (minimum charge of £20 + VAT)

**BY SIGNING THIS FORM YOU AGREE THAT YOU HAVE READ AND UNDERSTAND OUR CONDITIONS OF SALE AND WISH TO BE BOUND BY THEM, AND AGREE TO PAY THE BUYER'S PREMIUM AND ANY OTHER CHARGES MENTIONED IN THE NOTICE TO BIDDERS. THIS AFFECTS YOUR LEGAL RIGHTS.**

Your signature:

Date:

\* Covering Bid: A maximum bid (exclusive of Buyers Premium and VAT) to be executed by Bonhams only if we are unable to contact you by telephone, or should the connection be lost during bidding.

**NB. Payment will only be accepted from an account in the same name as shown on the invoice and Auction Registration form.**

**Please email or fax the completed Auction Registration form and requested information to:**

Bonhams, Customer Services, 101 New Bond Street, London, W1S 1SR. Tel: +44 (0) 20 7447 7447 Fax: +44 (0) 20 7447 7401, bids@bonhams.com

Bonhams 1793 Limited. Montpelier Street, London SW7 1HH. Incorporated in England. Company Number 4326560.



1793

**Bonhams**

22 Queen Street  
Edinburgh  
EH2 1JX

+44 (0) 131 225 2266  
+44 (0) 131 220 2547 fax

